



**Compton Community College District
1111 E. Artesia Blvd.
Compton, CA 90221**

DATE: October 22, 2018
TO: All Bidders
PROJECT: RFQ CCC-053
Campus Drive DG & Landscape
SUBJECT: ADDENDUM #1

The following changes, omissions, and/or additions to the Project Documents shall apply to bids made for and to the execution of the various parts of the work affected thereby, and all other conditions shall remain the same.

Careful note of the Addendum shall be taken by all parties of interest so that the proper allowances may be made in strict accordance with the Addendum

Respondent shall acknowledge receipt of this Addendum in the bid documents. Failure to do so may subject Respondent to disqualification.

1. RFC Questions and Answers

1.1 See attached spreadsheet with RFC Questions and Answers

Attachments:

Detail 1A, Planter Area Along West Property Line
RFC Questions & Answer spreadsheet
Irrigation As-Builts

END OF ADDENDUM #1

COMPTON COMMUNITY COLLEGE DISTRICT

CCC-053 Campus Drive DG Landscape

RFC Questions Answers

Addendum #1 - October 22, 2018

RFC	Question	Reference Document	Answer
1	Scope of Work - Part 1 - 1.2.A.1.1 states "This contractor will be able to show that they have completed at least three projects of similar size and scope within the past five years.: Is this documentation required at time of the District's issuance of a Notice of Award?	Scope of Work - Part 1 - 1.2.A.1.1	Apparent Low Bidder will provide these project references at the post-bid interview
2	Scope of Work - Part 1 - 1.1.D.25, 31 & 32 states "Trim existing plants, remove weeds and make any required irrigation repairs." Will as-builts of the irrigation system be provided? If not, how is contractor to determine from a pricing standpoint what is existing and may need to be replaced?	Scope of Work - Part 1 - 1.1.D.25, 31 & 32	Irrigation As-builts for this area provided with this Addendum #1.
3	Scope of Work - Part 1 - 1.2.A.1.H indicates there is to be a new bubbler at each plant. Should the entire irrigation system be a new in these areas or will we be tying into the existing system?	Scope of Work - Part 1 - 1.2.A.1.H	Use existing irrigation system.
4	Scope of Work - 1.23.a indicates that all submittals are to be sent "Five (5) Days from the District's issuance of a Notice of Award." Section 32 00 90 - 1.07 SUBMITTALS A. notes "Within forty five (45) days after award of the Contract, submit a complete list of all materials proposed to be furnished and installed under this Section, demonstrating complete conformance with the requirements specified." Which will the contractor be held to?	Scope of Work - 1.23.a	Submittals are to be provided Five (5) days after Notice of Award.
5	Will there be an on-site area provided to stockpile spoils and removed DG and shrubs? If so, please provide a map indicating these area(s).		Shrubs and debris t be removed from the site by the contractor. Any excess clean soil to be placed in a location onsite at the direction of the CM
6	On the project plan, 25 and 32 share the same area while the limit of work area for 31 is unclear. Please better define.		Areas 25 & 32 are the same area: consider as one since work is the same. Area 31 is the planting area west of the sidewalk and east of parking area.
7	Section 32 00 90 - 3.09 REVIEWS A.6 notes "Final acceptance of project/one hundred twenty (90) day maintenance" Please define if the intent is for one hundred twenty days (120) or ninety (90).	Section 32 00 90 - 3.09 REVIEWS A.6	Ninety (90) days
8	Section 32 00 90 3.04 FIMAL GRADES E notes "All shrub areas to receive one inch (3") of decomposed granite per plans (1 1/2" in groundcover areas)" Please define if this is in addition to the 4" of mulch noted under the SOW for the planting areas. If it is, please define if it should be one inch (1") or three inches (3").	Section 32 00 90 - 3.04 FINAL GRADES E	There is to be only 4" total of DG in all planting areas indicated on the Scope of Work to receive red yucca plants.
9	Section 01 43 80 indicates "Start Construction Phase 11/21/19" and Construction Completion 01/02/19. Please define if work is to start in 2018 and be completed in 2019 or start in 2019 and be completed in 2020.	Section 01 43 80	Start November 21, 2018; complete January 2, 2019
10	If the Construction phase is from 11/21/18 to 01/02/19, based on our experience, it is unrealistic to expect a project of this size to be completed in 27 working days especially with many vendors and suppliers closed from December 21 to January 02. We believe a more realistic schedule would have a completion date of 02/28/19 which would be 66 working days. Please advise if the District would be amendable to this more realistic duration.		No changes to the duration of the project. Bid per the documents issued.
11	Please confirm that we are NOT to cap existing spray heads.	Scope of Work 1.2.A	Remove sprinkler heads and cap off below the weed control fabric. Program the controller to "off" for those zones.

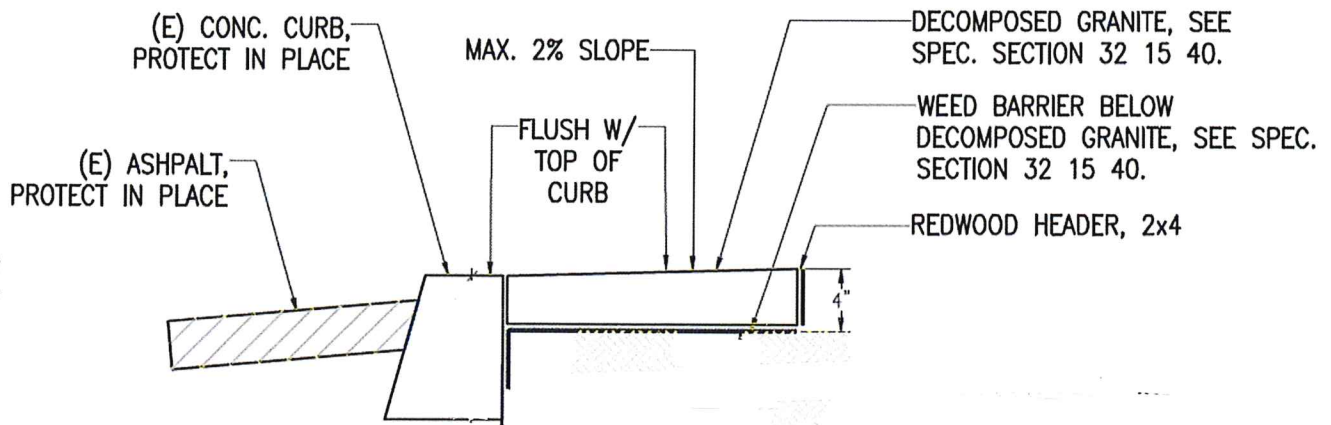
COMPTON COMMUNITY COLLEGE DISTRICT

CCC-053 Campus Drive DG Landscape

RFC Questions Answers

Addendum #1 - October 22, 2018

12	There is established bougainvillea along the fence line in zone 21, 24, 28 and 30 which is creating a natural screen between the College and neighbors. Please confirm this is to be left in place with trimming only to allow the installation of other SOW items.		Confirmed - Bougainvillea is to be trimmed back to within 12" of existing fence line. See attached detail 1A for the areas along the west property line. Redwood header is to be placed at approximately 12" away from the existing fence line.
13	At Zones 21, 24, 28 - is the DG from curb to fence line, leaving the bougainvillea in place? If not, what is the required width of the DG area?		Excavate as required & replace w.D.G. to approximately 12" away from the fence and bougainvillea. Protect existing bougainvillea and fencing in place.
14	At Zones 25, 31, 32 it states we are to trim existing plants, remove weeds and make irrigation repairs. Please confirm these areas are NOT to also receive new DG per 1.2.A.1 and 1.2.A.1.E-G.	Scope of Work 1.2.A	Confirmed - Areas 25, 31 and 32 do not receive D.G.

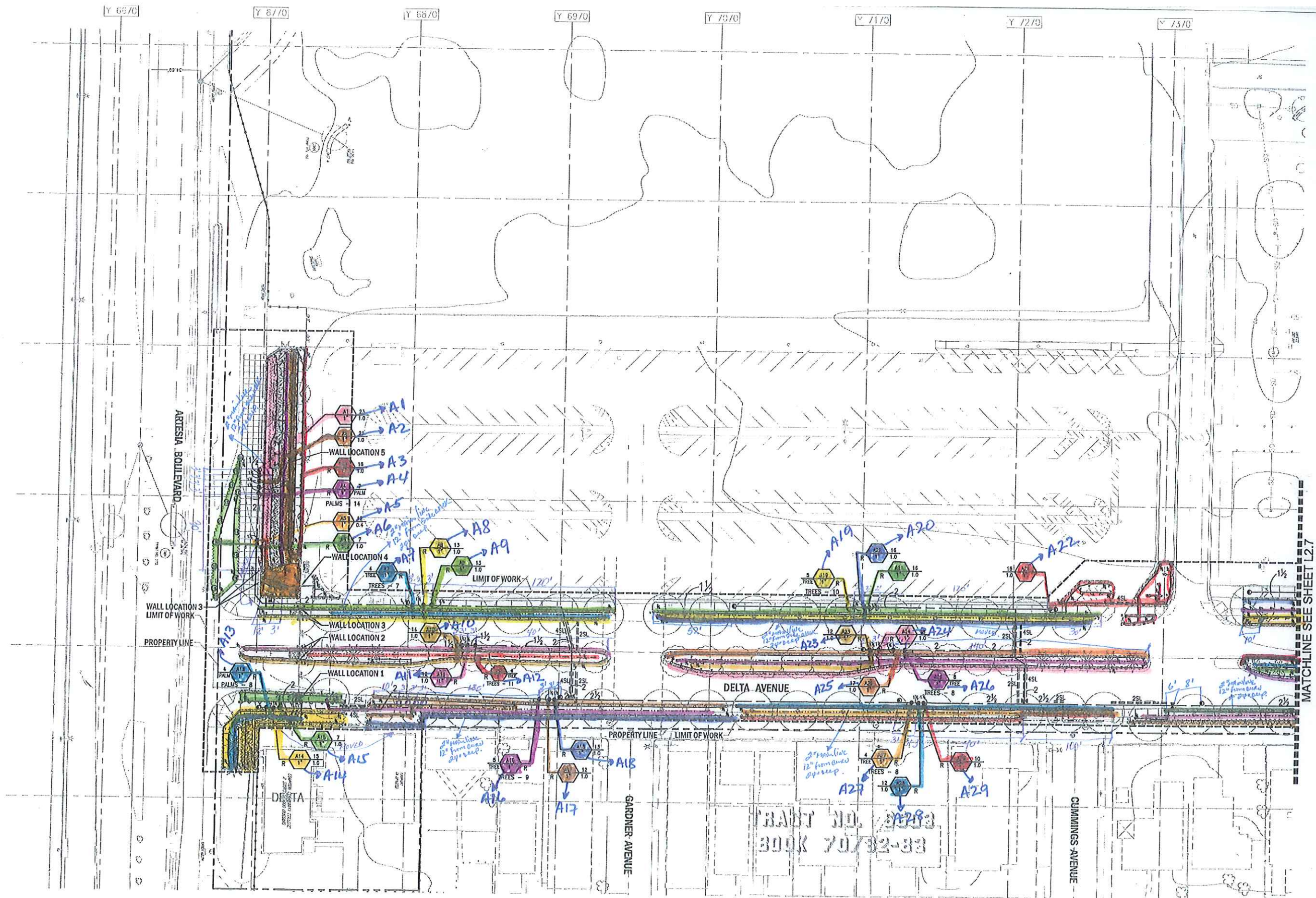


NOTES:

1. Fencing and Planting along fence to be protected in place

Detail 1A:

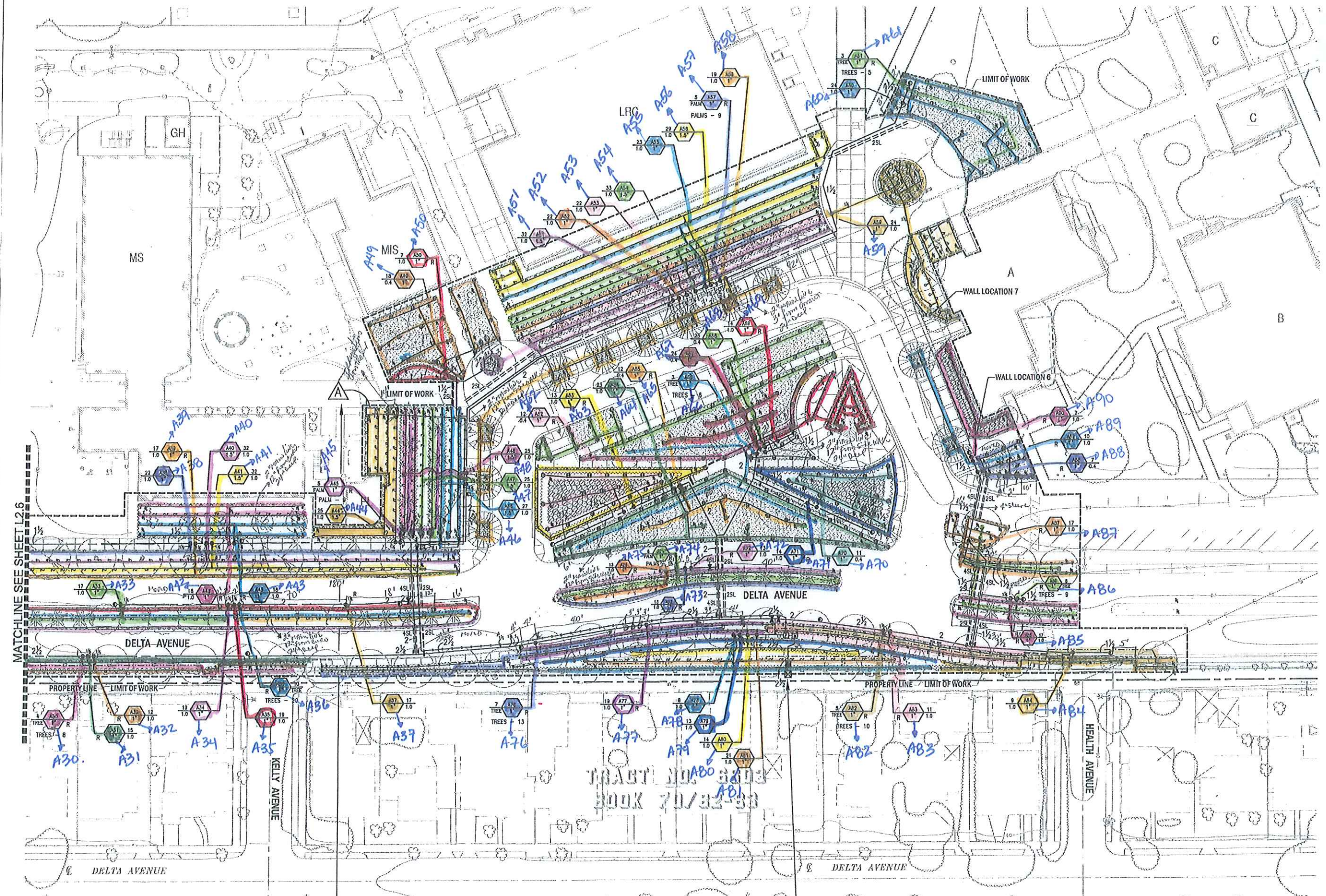
TYPICAL PLANTER AREA ALONG EAST PROPERTY LINE



IRRIGATION PIPING THROUGH WALL(S) NOTE -
 COORDINATE THE ROUTING OF IRRIGATION PIPING THROUGH PLANTER WALL WITH THE USE OF ROUTING PIPING BELOW WALL FOOTING OR BY CORE DRILLING THROUGH PLANTER WALL AS REQUIRED. COORDINATE PIPING PENETRATION LOCATIONS (AND) SECURE PERMISSION FROM DISTRICT PRIOR TO CUTTING OR BORING. TYPICAL FOR ALL WALLS.
 WALL LOCATIONS 1 THROUGH 5 AS NOTED ABOVE ON PLAN.

MATCHLINE SEE SHEET L2.7

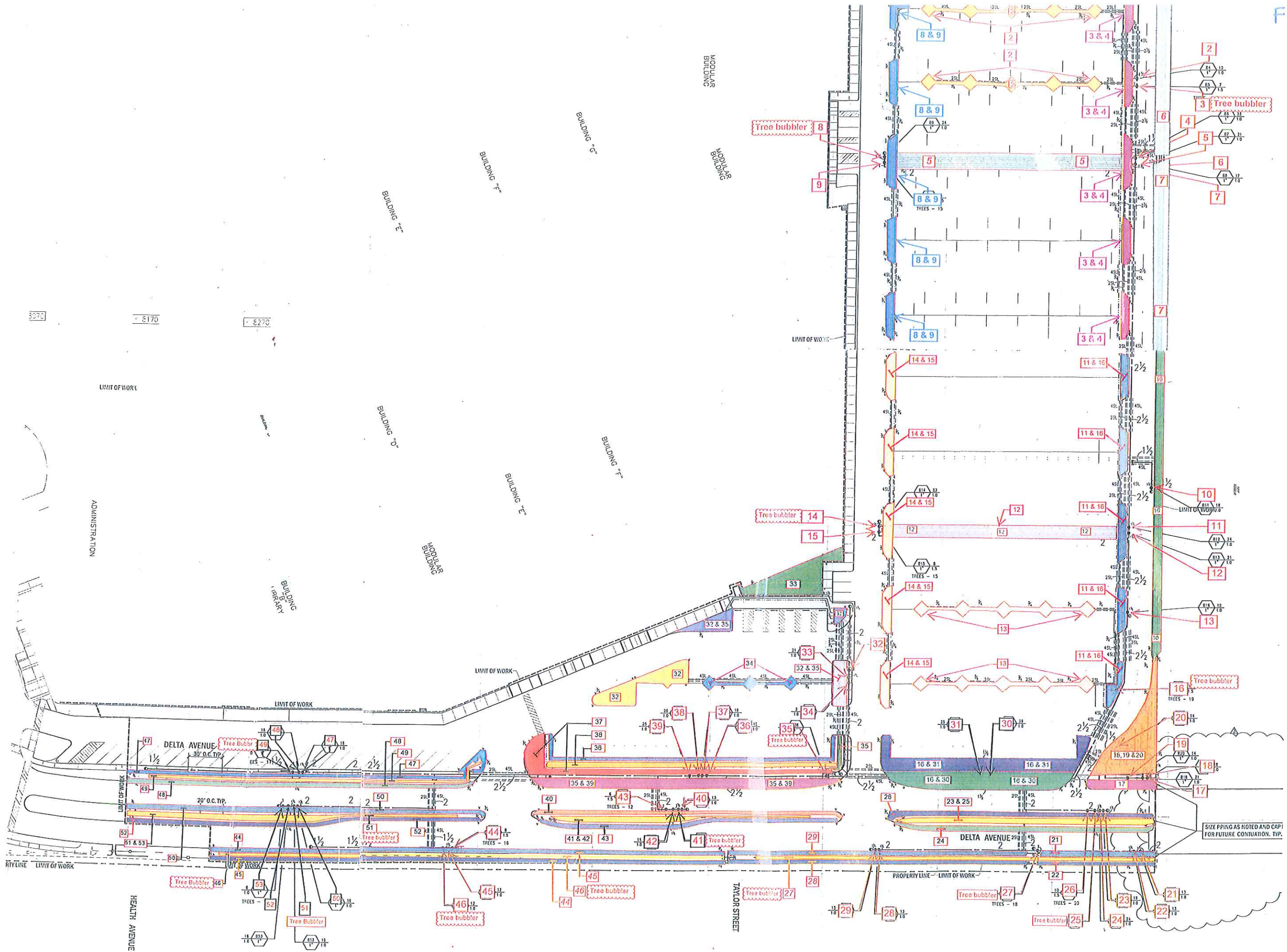
TRACT NO. 24283
 BOOK 70/32-33



MATCHLINE SEE SHEET L2.6

**SYSTEM "A":
IRRIGATION CONTROLLER NOTE -**
ONE (1) IRRIGATION CONTROLLER "A" MOUNTED IN A FREE-STANDING SECURITY ENCLOSURE. REFER TO IRRIGATION CONTROLLER NOTES ON SHEET L2.0 FOR ORDERING SPECIFICATION AND COORDINATION WITH 120 VAC ELECTRICAL POWER SUPPLY.

IRRIGATION POINT-OF-CONNECTION NOTE - SYSTEM "A":
IRRIGATION POINT-OF-CONNECTION - CONNECT NEW PVC PRESSURE MAIN LINE PIPING TO EXISTING 2.5-INCH IRRIGATION PRESSURE MAIN LINE FOR SUPPLY OF NEW LANDSCAPE IRRIGATION IMPROVEMENTS. REFER TO CIVIL ENGINEERING DRAWINGS FOR ACTUAL WATER LINE LOCATION AND ADDITIONAL WATER SUPPLY INFORMATION.



LIMIT OF WORK

ADMINISTRATION

BUILDING LIBRARY

BUILDING D

MODULAR BUILDING

BUILDING E

BUILDING F

MODULAR BUILDING

HEALTH AVENUE

DELTA AVENUE
39' O.C. TYP.

TAYLOR STREET

LIMIT OF WORK

LIMIT OF WORK

PROPERTY LINE - LIMIT OF WORK

DELTA AVENUE

SIZE PIPING AS NOTED AND CAP FOR FUTURE CONTINUATION, TYP.

F

3070 6170 6270

LIMIT OF WORK

ADMINISTRATION

BUILDING "B"
LIBRARY

ONE STORY
B. STANLEY JR.
DEVELOPMENT
INTER

BUILDING "E"

BUILDING "D"

MODULAR
BUILDING

BUILDING "F"

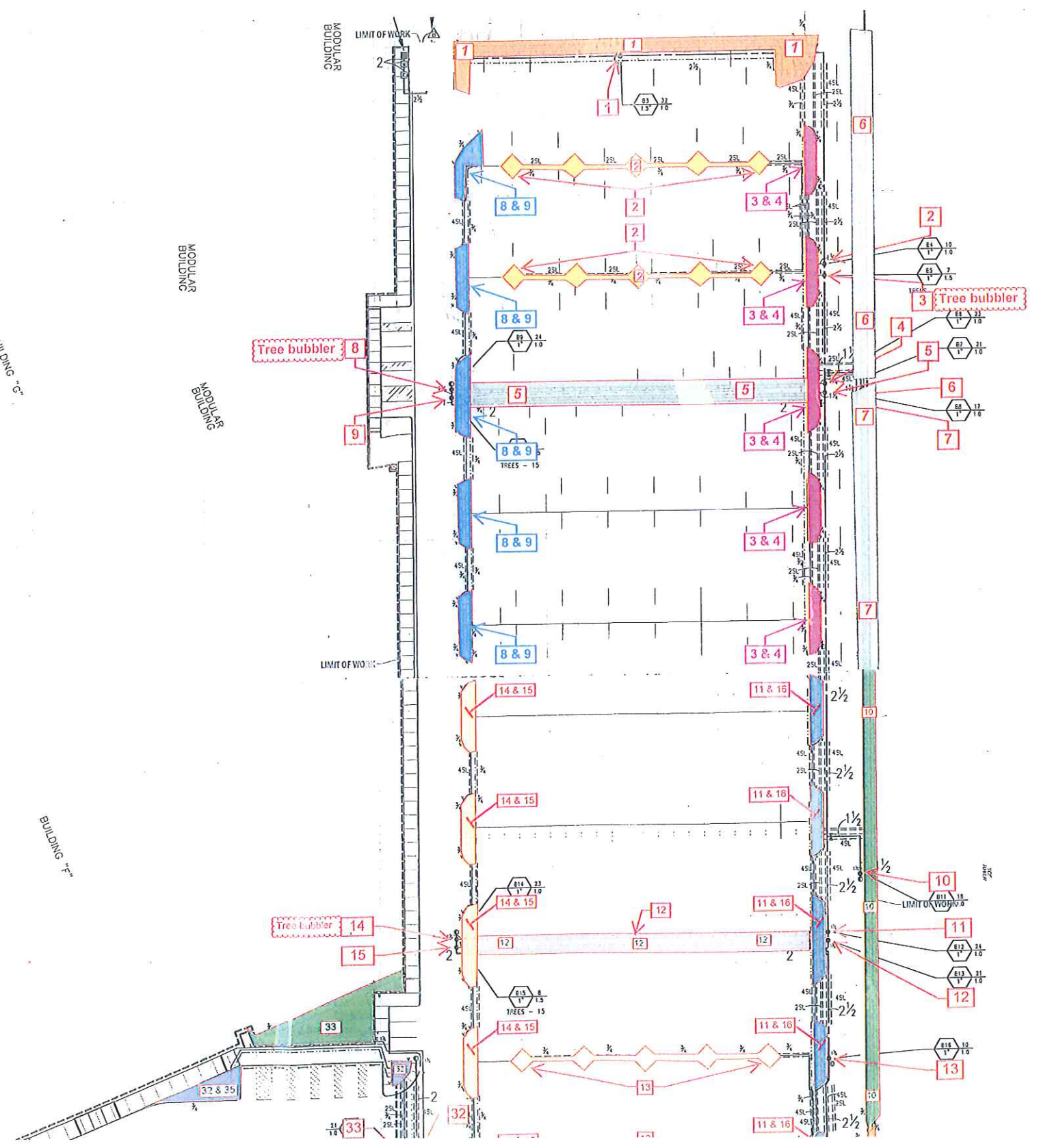
BUILDING "E"

BUILDING "G"

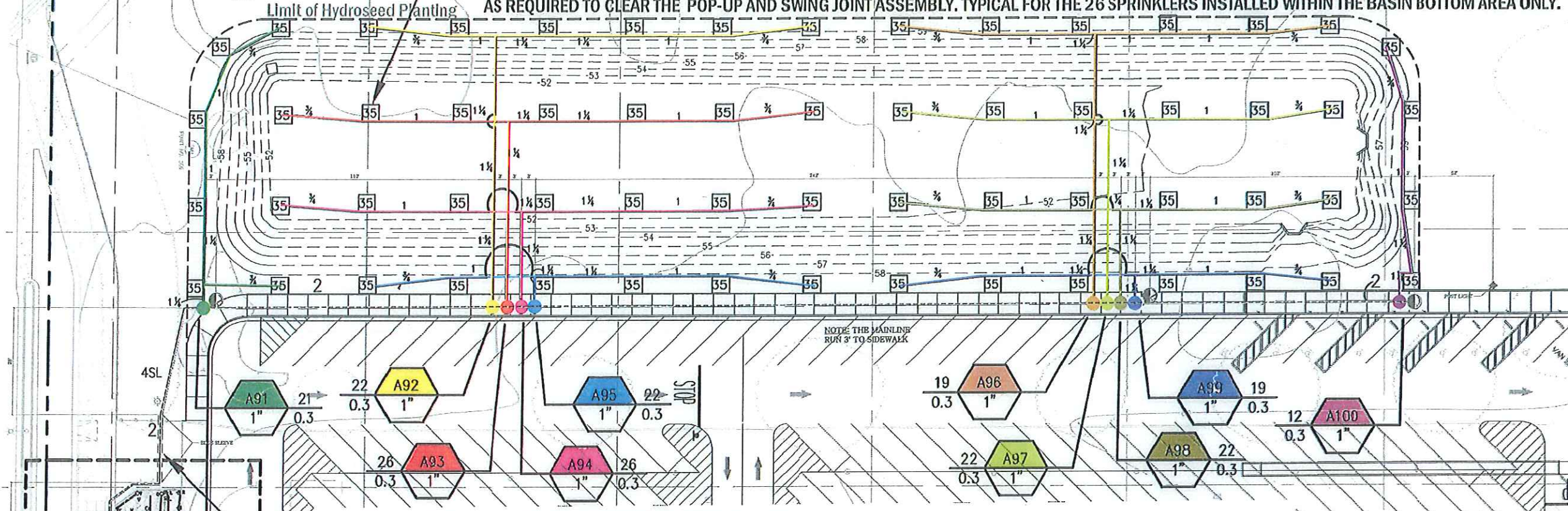
BUILDING "F"

MODULAR
BUILDING

MODULAR
BUILDING



NOTE:
 INSTALL PIPING WITH 1-INCH SOIL COVER ABOVE THE SOIL FABRIC ON TOP OF THE GRAVEL. PROVIDE ADDITIONAL GRAVEL CLEARANCE BELOW THE SOIL FABRIC AS REQUIRED TO CLEAR THE POP-UP AND SWING JOINT ASSEMBLY, TYPICAL FOR THE 26 SPRINKLERS INSTALLED WITHIN THE BASIN BOTTOM AREA ONLY.

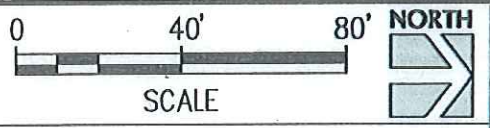


IRRIGATION ROUTING COORDINATION NOTE -
 PROVIDE SHOP DRAWING OF MAIN LINE ROUTING INDICATING ANY PAVEMENT TRENCHING REQUIRED FOR REVIEW AND APPROVAL BY LANDSCAPE ARCHITECT PRIOR TO INSTALLATION. INSTALL SIGNAL CABLE WITHIN SCHEDULE 40 PVC CONDUIT UNDER ANY PAVEMENT. INSTALL MAIN LINE PIPING WITHIN SCHEDULE 40 PVC CONDUIT UNDER VEHICULAR PAVEMENT.

IRRIGATION SYSTEM CONNECTION NOTE -
 CONNECT NEW PRESSURE MAIN LINE PIPING TO EXISTING 2-INCH MAIN LINE PIPING IN THIS VICINITY AND CONNECT NEW 2-WIRE SIGNAL CABLE TO EXISTING SIGNAL CABLE WITH WATERPROOF CONNECTIONS AT LOCATION OF MAIN LINE CUT-IN CONNECTION. ADAPT NEW PIPING AS REQUIRED FOR PERMANENT CONNECTION. COVER CABLE CONNECTION WITH RECTANGULAR VALVE BOX AND NOTE LOCATION ON AS-BUILT RECORD DRAWINGS.



Compton Community College District
 Utility Infrastructure - Phase 1



IRRIGATION PLAN

BULLETIN NO. IB-21
 DATE: 08/05/13
 DSA # -
 THIS REVISES IN PART SHEET: L2.6 PH 1
 SHEET: LS-2

S&K ENGINEERS
 421 E. Huntington Dr.
 Monrovia, CA 91016
 p: 626.930.1383 f: 626.930.1385
 S&K Job No: 11013.02

Rabben/Herman design office
 Landscape Architecture Master Planning Urban Design
 833 Dover, Suite 9
 Newport Beach, CA 92663
 (949) 548-3459
 design@rhdo.com



OWNER:

COMPTON C.C. - EL CAMINO COLLEGE
 TURF & IRRIGATION REPAIRS WEST OF
 DETENTION POND
 1111 E. ARTESIA BLVD. • COMPTON, CA 90221

DRAWN BY: EM CHECKED BY: TS
 DATE: 03/24/14

REVISIONS		
NO.	DESCRIPTION	DATE

DRAWING TITLE
IRRIGATION PLAN
 SEGMENT 5

DRAWING NO.
L11

IRRIGATION SYSTEM DESCRIPTION:

1. TURF FIELD IS IRRIGATED WITH HIGH-EFFICIENCY STREAM ROTOR SPRINKLERS OF VARIOUS SIZES AND VARIOUS PRECIPITATION RATES ASSIGNED TO SEPARATE CONTROL VALVES AS SHOWN.
2. DOMESTIC WATER SUPPLIES THE INDEPENDENT IRRIGATION SYSTEM. IRRIGATION SYSTEM REQUIRES A BOOSTER PUMP TO OPERATE THE LARGE BALL FIELD STREAM ROTORS WITH A LOOP MAIN LINE. THE WATER SUPPLY LINE IS PROTECTED WITH A HIGH HAZARD REDUCED PRESSURE TYPE BACKFLOW PREVENTER ASSEMBLY.
3. IRRIGATION IS DESIGNED TO OPERATE UP TO 2 STATIONS AT ONE TIME WITHIN THE LIMITATION OF BOOSTER PUMP. IRRIGATION CONTROLLER SHALL BE PROGRAMMED TO OPERATE A SCHEDULE WITH DUAL PROGRAMS WITH SELECTED STATIONS IN ORDER TO NOT EXCEED THE HYDRAULIC PEAK OPERATING FLOW OF THE BOOSTER PUMP.
4. IRRIGATION SYSTEM OPERATES WITH ITS OWN "SMART" CONTROLLER UTILIZING CONVENTIONAL HARD WIRE TO ENERGIZE THE ELECTRIC CONTROL VALVES. IRRIGATION CONTROLLER OPERATES A DEDICATED FLOW SENSOR AND MASTER VALVE TO PROVIDE HIGH-FLOW SHUT DOWN.
5. SHUT-OFF VALVES ARE LOCATED THROUGHOUT THE SYSTEM TO PROVIDE FOR PARTIAL SHUTDOWN OF THE SYSTEM.
6. QUICK COUPLING VALVES ARE LOCATED TO PROVIDE INCIDENTAL WATERING.
7. IRRIGATION "SMART" SPRINKLER CONTROLLER PROVIDES 4 PROGRAMS, PROVIDE "CYCLE AND SOAK" MULTIPLE START SCHEDULING AND SHALL BE CAPABLE OF DAILY AUTOMATIC SEASONAL ADJUSTMENTS BASED ON DAILY ET WEATHER DATA AVAILABLE FROM THE MANUFACTURER'S WEBSITE, RAINMASTER.COM. REFER TO CONTROLLER NOTES ON SHEET L1.2 FOR ORDERING SPECIFICATION.

IRRIGATION POINT-OF-CONNECTION NOTE - SYSTEM 'C':

IRRIGATION POINT-OF-CONNECTION - CONNECT NEW PVC PRESSURE MAIN LINE PIPING TO EXISTING 6-INCH WATER LINE PROVIDED FOR SUPPLY OF NEW LANDSCAPE IRRIGATION SYSTEM 'C'. REFER TO CIVIL ENGINEERING DRAWING UTILITY PLAN SHEET C7.3 FOR ACTUAL WATER LINE STUBOUT LOCATION AND ADDITIONAL WATER SUPPLY INFORMATION.

PEAK IRRIGATION DEMAND: 130 G.P.M.
 SYSTEM DESIGN PRESSURE: 105 P.S.I.
 EXISTING WATER PRESSURE: 65 P.S.I.
 BOOSTER PUMP OUTPUT PRESSURE: 110 P.S.I.
 SYSTEM IS CAPABLE OF OPERATING UP TO 2 STATIONS WITHIN LIMIT OF PUMP

**SYSTEM 'C':
 IRRIGATION CONTROLLER NOTE-**

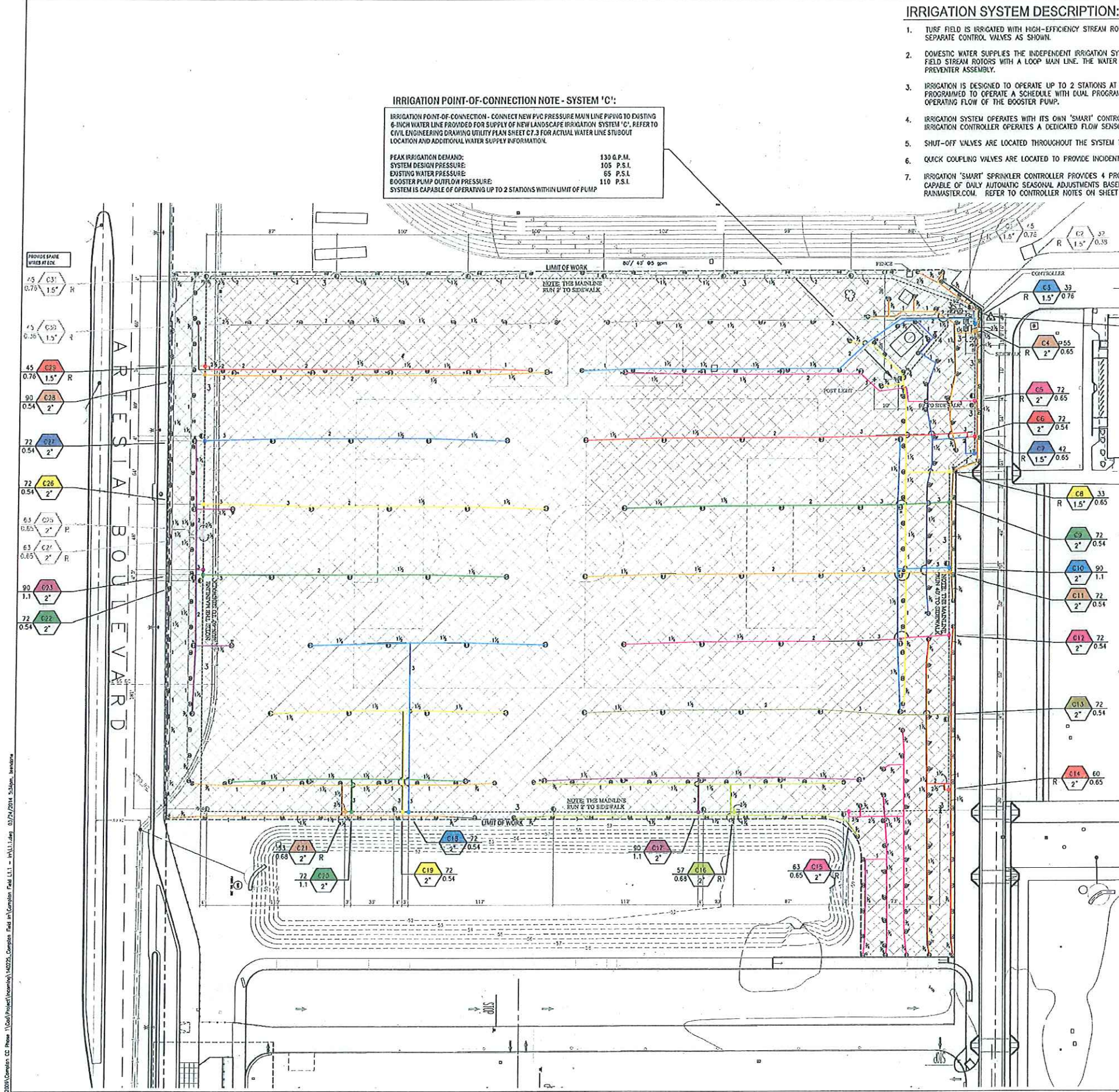
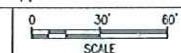
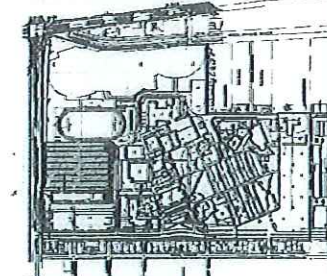
ONE (1) IRRIGATION CONTROLLER 'C' MOUNTED IN A FREE-STANDING SECURITY ENCLOSURE REFER TO IRRIGATION CONTROLLER NOTES ON SHEET L1.2 FOR ORDERING SPECIFICATION AND COORDINATION WITH 120 VAC ELECTRICAL POWER SUPPLY.

**SYSTEM 'C':
 BOOSTER PUMP ASSEMBLY NOTE:**

PROVIDE AND INSTALL ONE (1) BOOSTER PUMP ASSEMBLY FOR SYSTEM 'C' MOUNTED ON PRE-ASSEMBLED SKID FRAME AT LOCATION SHOWN. REFER TO EQUIPMENT LEGEND FOR ORDERING SPECIFICATION ON SHEET L1.2. ADAPT MAIN LINE PIPING TO PUMP CONNECTIONS WITH GALVANIZED STEEL FITTINGS AND GALVANIZED STEEL FLANGE ADAPTERS ABOVE GROUND. ADAPT PVC MAIN LINE PIPING TO GALVANIZED STEEL PIPING BELOW GROUND WITH LEEMCO DUCTILE IRON PIPE FITTINGS AS REQUIRED. USE STAINLESS STEEL CLASS 314 BOLTS, NUTS AND WASHERS FOR FLANGED CONNECTIONS. ELECTRICAL POWER SUPPLY TO PUMP UNIT AND CONTROLS IS PROVIDED AT PUMP LOCATION BY GENERAL CONTRACTOR. REFER TO SITE ELECTRICAL DRAWINGS FOR ACTUAL LOCATION. FINAL ELECTRICAL POWER CONNECTION TO PUMP CONTROLS IS THE RESPONSIBILITY OF THE LANDSCAPE CONTRACTOR. CONTACT WATER/TECHNICAL REPRESENTATIVE, STEVEN KIM, GENTILE & ASSOCIATES, PHONE NUMBER (760) 214-5734 FOR COORDINATING FACTORY ASSISTANCE WITH THE FIRST TIME PUMP START-UP.

SPARE WIRE NOTE:

PROVIDE TWO SPARE WIRES AND ONE SPARE COMMON WIRE CONTINUOUSLY FROM AUTOMATIC CONTROLLER TO LAST ELECTRIC CONTROL VALVE BOX, FOLLOWING MAIN LINE ROUTE. ALLOW 30-INCH EXPANSION LOOP AT EACH CONTROL VALVE ALONG MAIN LINE ROUTING. THE LOCATIONS FOR SPARE WIRES ARE IDENTIFIED ON DRAWING WITH THE WORDS "PROVIDE SPARE WIRES AT ECV".



H:\Projects\2014\Compton CC - Turf & Irrigation\Drawings\Irrigation Plan L1.1 - IRL.L1.dwg 03/24/14 5:30pm, Version 1