

Photo Survey: A Digital Assessment of El Camino College

Spring 2013

Institutional Research & Planning

Why conduct a Photo Survey?



1. Photos can help to identify things that can't be captured with a traditional survey.¹
2. Photos have the ability to capture attention.²
3. Photos provide an accurate and detailed record that can be accessed, maintained, and used over time.³
4. Photos can inform delivery of College services.

¹Jackson, M. W. and J.L. Rodgers. 2012 Digital Assessment: A Picture is Worth 1,000 Surveys. Planning for Higher Education January-March 2012

²Perry, B. 2006. Using Photographic Images as an Interactive Online Teaching Strategy. Internet and Higher Education 9 (3): 229–40

³Gee, M. K., and C. Ullman. 1998. Teacher/Ethnographer in the Workplace: Approaches to Staff Development. Unpublished training manual, Lake County College, Grayslake, IL.

Photo Survey details



- 52 students were invited to participate, 15 students accepted.
- Participants must own a smartphone.
- Students who wanted to participate were invited to an in-person orientation or sent instructions via email.

Photo Survey Instructions



1 - Take photo



5 photos of things that you  about ECC

5 photos of things that you  about ECC

Photos must be on campus.

Photo Survey Instructions



2 - Share photo

After taking each photo, share the photo by attaching it to an email from your smartphone.

Photo Survey Instructions

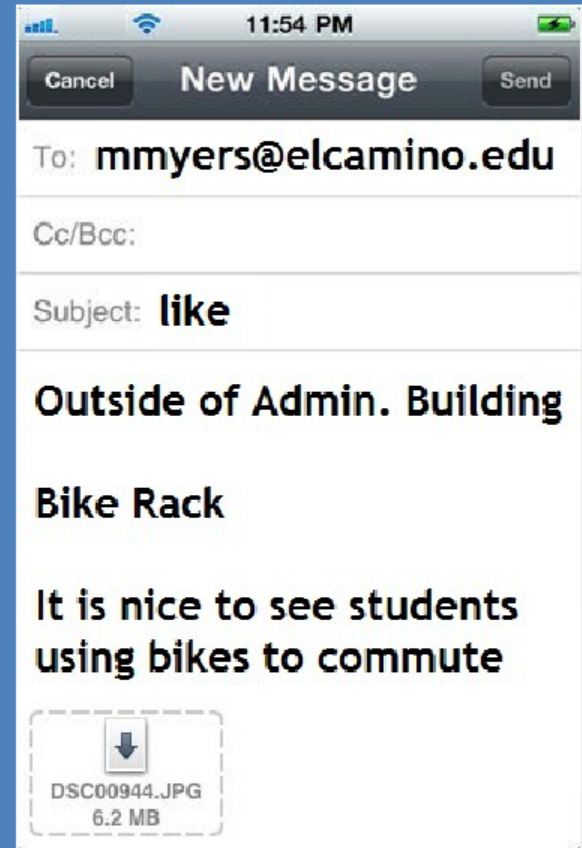


3 - Compose email



Category of photo
(like or dislike)

- Where on campus was the photo taken?
- What are we looking at?
- Why did you choose this photo?





THE GOOD

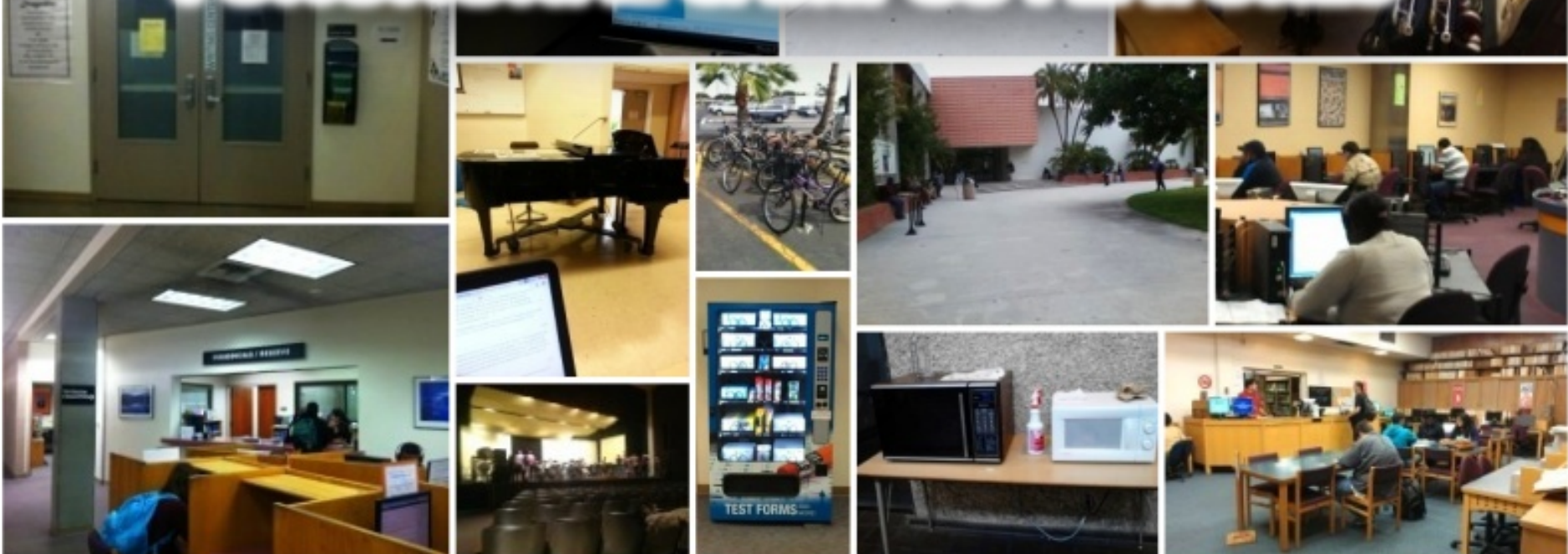
“Like” Photos



- 61 “Like” Photos were submitted
- “Like” Photos were divided into six themes:
 - Functional Campus Features - 19
 - Campus Setting/Environment - 18
 - Extracurricular/Student Activities - 8
 - Student Services - 7
 - Food/Food Services - 5
 - Academic/Technical Courses - 4



FUNCTIONAL CAMPUS FEATURES



Functional Campus Features



11:54 PM

Cancel Send

Subject: Like

Where: Inside the Library
Media Technology Center

What: Free computers for
students to work on/print
assignments from

Why: The media center
provides many computers
for those who can
work/print at school.



CAMPUS SETTING/ENVIRONMENT



Campus Setting/Environment



11:54 PM

Cancel Send

Subject: Like

Where: Outside of Math Building

What: The new Math & Business Building

Why: The new building was constructed very well and provides a more professional environment for El Camino's campus.





EXTRACURRICULAR/STUDENT ACTIVITIES



Extracurricular/Student Activities



11:54 PM

Cancel Send

Subject: Like

Where: Shop 400

What:

Why: Programs like girls in the garage





STUDENT SERVICES



Student Services



11:54 PM

Cancel Send

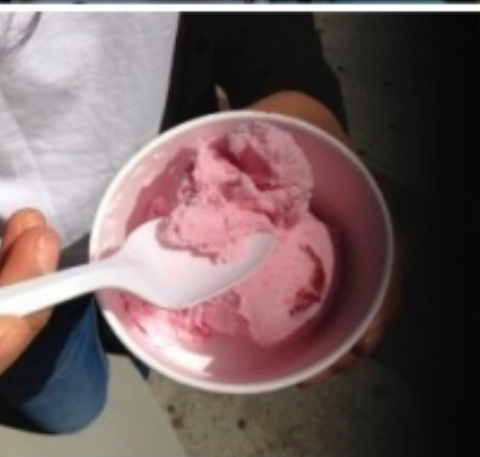
Subject: Like

Where: Student Services Building

What: Career and Transfer Center

Why: This is where the magic happens: counselors work with students to create plans to graduate, improve employment situations, and/or transfer to universities





Food/Food Services



11:54 PM

Cancel Send

Subject: Like

Where: Inside the Crepe Café (by Students Activities Center)

What: Crepe Menu

Why: It is unique that El Camino has its own crepe café with a variety of choices.





ACADEMIC/TECHNICAL COURSES



Academic/Technical Courses



11:54 PM

Cancel Send

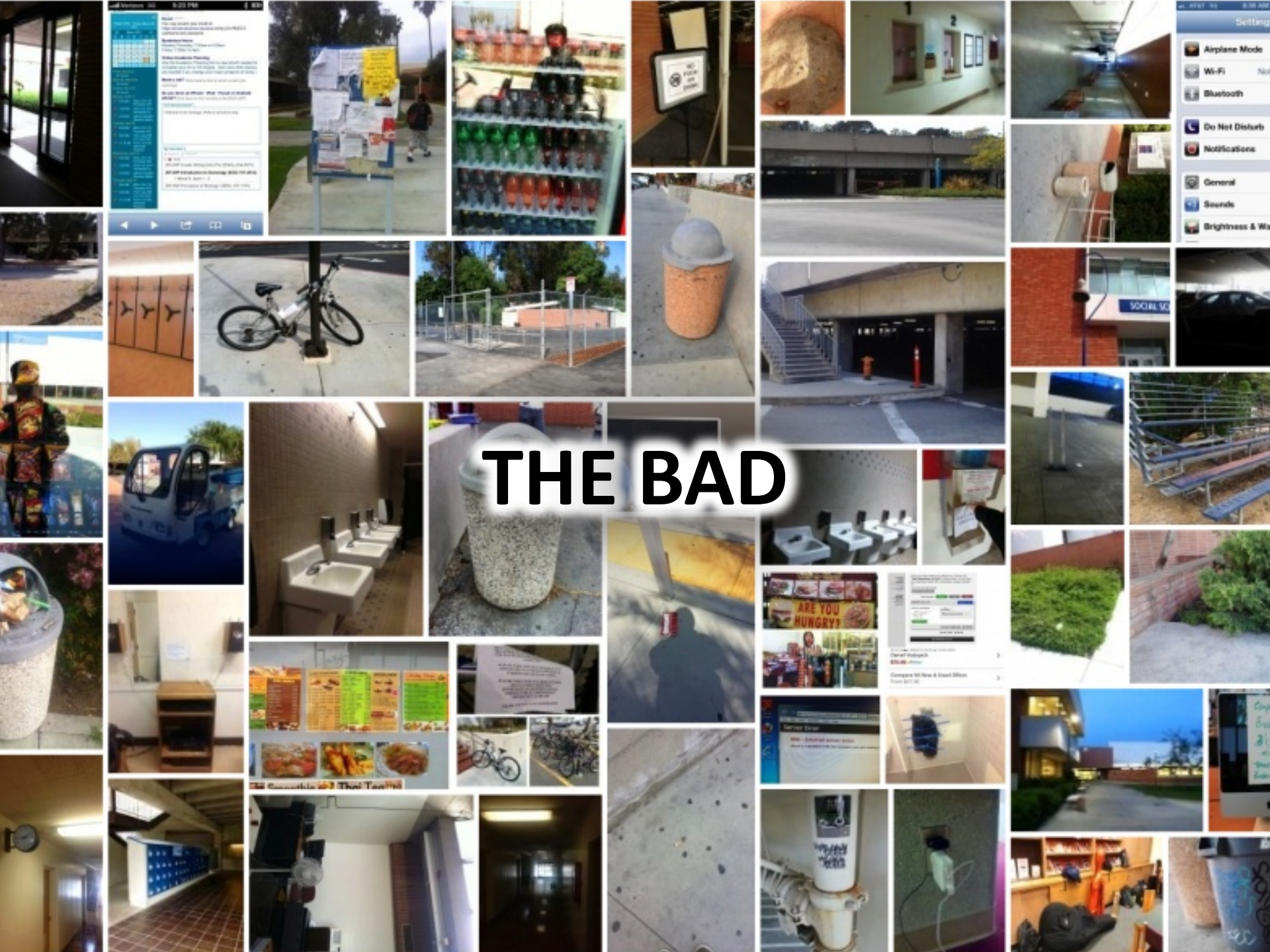
Subject: Like

Where: ARTB basement

What: Bronze casting demonstration

Why: I think it's great that ECC has the unique equipment for this.



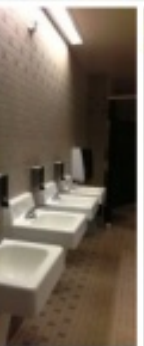
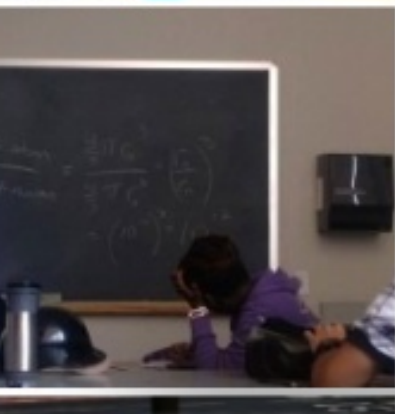
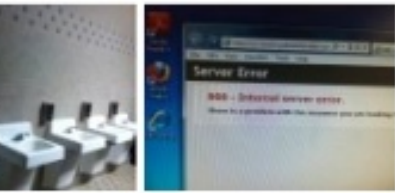


THE BAD

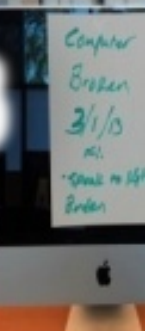
“Dislike” Photos



- 50 “Dislike” Photos were submitted
- “Dislike” Photos were divided into five themes:
 - Dysfunctional Campus Features - 21
 - Campus Setting/Environment - 18
 - Food/Food Services - 5
 - Lack of Recycling - 4
 - Student Services - 2



DYSFUNCTIONAL CAMPUS FEATURES



Dysfunctional Campus Features



11:54 PM

Cancel Send

Subject: Dislike

Where: Outside of music building/Parking Lot J

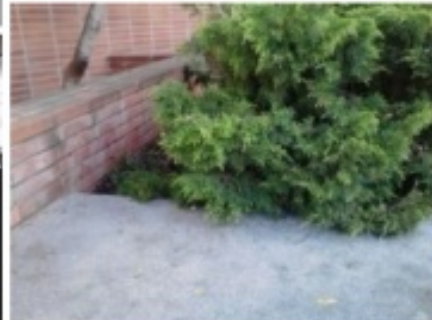
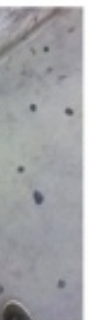
What:

Why: For many students, a bike is their sole transportation. Threatening to impound their bike because they didn't (couldn't) park at the rack is unacceptable.





CAMPUS SETTING/ENVIRONMENT



Campus Setting/Environment



11:54 PM

Cancel Send

Subject: Dislike

Where: Records window

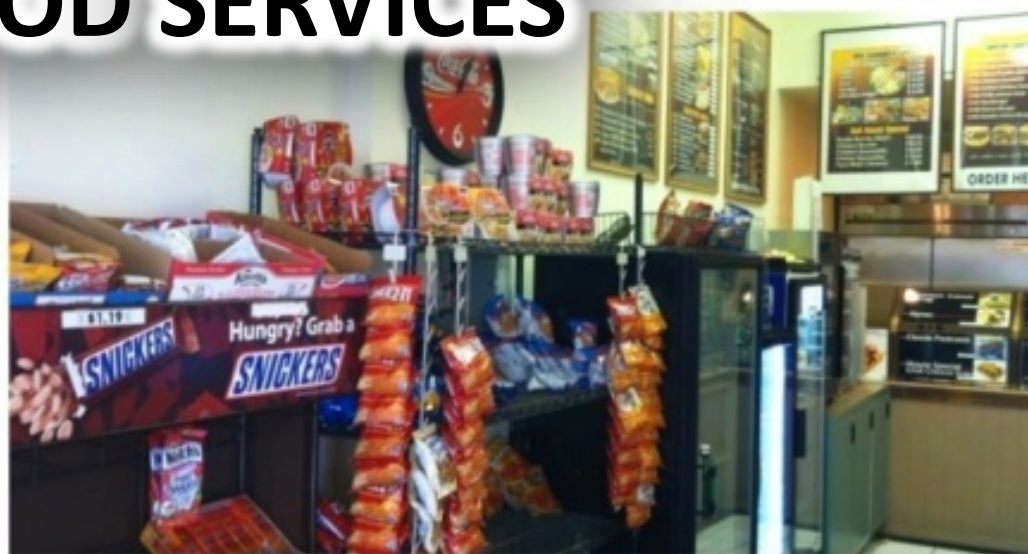
What: Graffiti

Why: I would have more school pride if this wasn't everywhere.





FOOD/FOOD SERVICES



Food/Food Services



11:54 PM

Cancel Send

Subject: Dislike

Where: Campus Deli

What: Promotion of unhealthy foods.

Why: Students need healthful foods to stay alert and function during class. There is plenty of junk food available outside campus, how about some healthier food choices on campus?





LACK OF RECYCLING



Lack of Recycling



Friday, March 29, 2013

March 2013

W	T	F	S
27	28	1	2
6	7	8	9
13	14	15	16
20	21	22	23
27	28	29	30
3	4	5	6

March 30

March 31

April 01

BIOL-101-1151 Principles of Bi

SOCI-101-2814 Introduction to MATH-150-9803 Elementary Statist

April 02

BIOL-101-1151 Principles of Bi

HIST-122-2368 U.S. Soc/CultH

PSYC-15-2796 Abnormal Psycholo

April 03

BIOL-101-1151 Principles of Bi

SOCI-101-2814 Introduction to MATH-150-9803 Elementary Statist

April 04

BIOL-101-1151 Principles of Bi

HIST-122-2368 U.S. Soc/CultH

PSYC-15-2796 Abnormal Psycholo

Enter retrieval data from Exchange email account

Email: You may access your email at <https://email.elcamino.edu/owa> using your MyECC username and password.

Bookstore Hours:
Monday-Thursday: 7:30am to 6:00pm
Friday: 7:30am to 4pm

Online Academic Planning
Use the Academic Planning link to view what's needed to complete your AA or AS degree. Also view what classes are needed if you change your major (program of study.)

Need a Job? Click here to find a list of current job openings.

Do you have an iPhone - iPad - iTouch or Android phone? Click here to find out about the MOX APP.

ECC Announcements

Click here to see messages. Point on an item to view

My Team Sites

Expand All Collapse All

Class

- 2012/SP Creatv Wrng: intro Fict (ENGL-25A-6572)
- 2013/SP Introduction to Sociology (SOCI-101-2814)
! Week 8: April 1 - 3
- 2013/SP Principles of Biology I (BIOL-101-1151)

El Camino College Bookstore
16007 Crenshaw Blvd
Torrance, CA 90506
Phone: [310-660-3380](tel:310-660-3380)
Contact Us

powered by **ePOS™**
from Sequoia Retail Systems, Inc.
Design ©2013 by Sequoia Retail Systems, Inc.

Once you have made your selections, click on the **"Add Selections to Cart"** button below. If you have any questions about this information, please contact US.

need to look up another course?
[Return to Course Lookup](#)

Select by Status: **Required** All None

BIOLOGY 101, 1151 **SPRING 2013**

BIOLOGY LAB MANUAL

ISBN: 9780077389697
Author: VODOPICH
Edition: 9TH
Year: 2011

Add? Qty? 1
New Purchase \$146.95

REQUIRED TEXT

Course Subtotal: \$146.95

Total: \$146.95

Add Selections to Cart

STUDENT SERVICES

Biology Laboratory Manual
Darrell Vodopich
\$70.99 Prime

Compare 94 New & Used Offers
From \$47.95

Student Services



11:54 PM

Cancel Send

Subject: Dislike

Where:

What: MyECC Website

Why: It's great that ECC is trying to use more technology, but there is no consistency. Some classes use team site and others use Etudes. Some use grade book, and some do not. Everyone should be on the same page.

Verizon 3G 5:23 PM

My Week

Today's Date: Friday, March 29, 2013

S	M	T	W	T	F	S
24	25	26	27	28	1	2
3	4	5	6	7	8	9
10	11	12	13	14	15	16
17	18	19	20	21	22	23
24	25	26	27	28	29	30
31	1	2	3	4	5	6

Friday, March 29
No events

Saturday, March 30
No events

Sunday, March 31
No events

Monday, April 01

- 8:00 AM BIOL-101-1151 Principles of Bi
- 1:00 PM SOCI-101-2814 Introduction to
- 4:30 PM MATH-150-9803 Elementary Statist

Tuesday, April 02

- 8:00 AM BIOL-101-1151 Principles of Bi
- 9:30 AM HIST-122-2368 U.S. Soc/Cultri
- 11:15 AM PSYC-15-2796 Abnormal Psycholo

Wednesday, April 03

- 8:00 AM BIOL-101-1151 Principles of Bi
- 1:00 PM SOCI-101-2814 Introduction to
- 4:30 PM MATH-150-9803 Elementary Statist

Thursday, April 04

- 8:00 AM BIOL-101-1151 Principles of Bi
- 9:30 AM HIST-122-2368 U.S. Soc/Cultri
- 11:15 AM PSYC-15-2796 Abnormal Psycholo

Error retrieving data from Exchange e-mail account
Email: redentials.
You may access your email at <https://email.elcamino.edu/owa> using your MyECC username and password.

Bookstore Hours:
Monday-Thursday: 7:30am to 6:00pm
Friday: 7:30am to 4pm

Online Academic Planning
Use the Academic Planning link to view what's needed to complete your AA or AS degree. Also view what classes are needed if you change your major (program of study.)

Need a Job? Click here to find a list of current job openings.

Do you have an iPhone - iPad - iTouch or Android phone? Click here to find out about the MOX APP.

ECC Announcements
Click here to see messages. Point on an item to stop.

My Team Sites
Expand All Collapse All

- Class
- 2012/SP Creatv Wrting:intro Fict (ENGL-25A-6572)
- 2013/SP Introduction to Sociology (SOCI-101-2814)
! Week 8: April 1 - 3
- 2013/SP Principles of Biology I (BIOL-101-1151)

Major Findings



1. Participants mostly focused on campus features and environment (good and bad) in their photos.
2. New features to the campus environment (example: MBA Building) were appreciated.
3. Participants mentioned their “pride” being positively/negatively effected by good/bad images on campus.
4. Graffiti, litter, and lack of recycling on campus were things that participants disliked.
5. Participants like the variety of food options on campus, but wish there were healthier or less expensive options.

Future Research Considerations



1. A larger-scale photo survey with more participants can be conducted in the future.
2. This photo survey can also be conducted at Compton Center.
3. Participants might need more of a focus/topic for the pictures they submit.

To access this and other reports, visit:

<http://www.elcamino.edu/administration/ir/surveys.asp>

