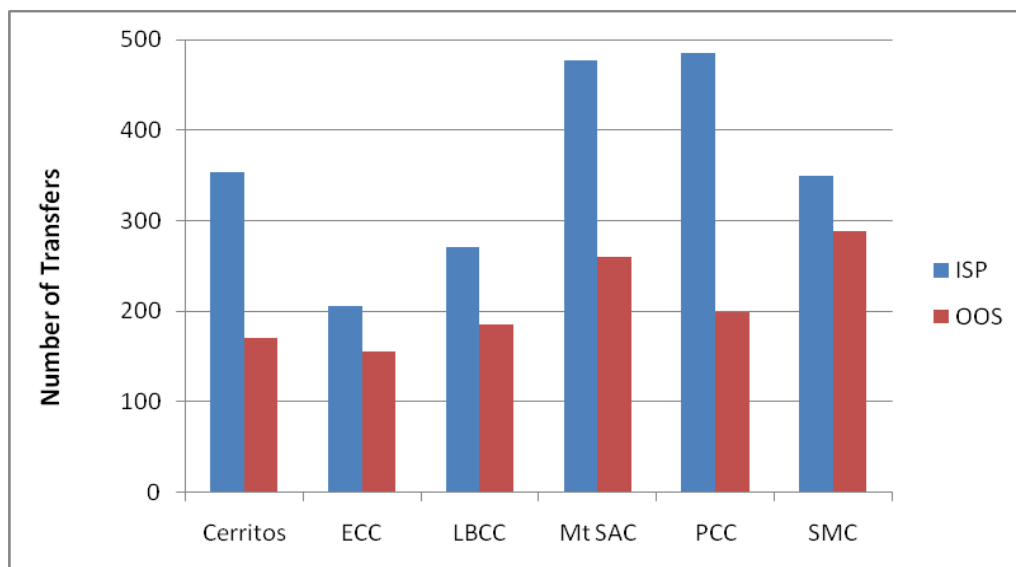


Transfers to In-State Private and Out of State Institutions El Camino College Peer Group Report, 2008-2009

This report is a brief peer group summary of a recently-released Chancellor’s Office tally of community college transfers to in-state private and out-of-state 4-year institutions. The figures below include all students who transferred to one of the two types of 4-year institutions in 2008-09 and who started at a California community college in the past 16 years, earning at least 12 units in the California community college system.¹ See the [original report](#) for more information on student cohorts and data limitations.

ECC saw the lowest number of transfers to in-state privates and out of state institutions in 2008-09 compared to this peer group. In addition, the number of transfers declined since a previous report (see [Research Brief 4](#)) while all other colleges in the peer group increased their transfers. Potential issues with data reporting are currently being investigated.

Institution Name	2008-09 Transfers		
	ISP	OOS	Total
Cerritos College	353	171	524
<i>El Camino College</i>	<i>206</i>	<i>156</i>	<i>362</i>
Long Beach City College	271	185	456
Mt San Antonio College	477	260	737
Pasadena City College	485	199	684
Santa Monica College	349	289	638



The most common in-state private university was by far the **University of Phoenix** for ECC and its peers. SMC and PCC also sent many students to USC. The top out of state schools by much smaller margins were **Ashford University**² and **University of Maryland – University College** (UMUC).

¹ Although peer colleges are of approximately the same size as El Camino, headcount enrollments varied considerably across the 16 years of the study. Therefore, comparisons should be made with caution.

² Ashford University is a recently-accredited, predominantly online institution based in Clinton, IA. UMUC is a public university offering online post-transfer undergraduate and graduate degree programs.