



Academic Performance Profile Fall 2012

El Camino College
and
Peer Institutions

**Institutional Research
El Camino College
June 2012**

Introduction

Accountability has created an atmosphere which seeks to measure how institutions perform in relation to other institutions. From US News and World Report rankings to California's Accountability Reporting for the Community Colleges (ARCC) as well as private sites which seek to compare colleges, measuring colleges against each other is now a common practice. These comparisons are often made system wide or else create Peer Groups based on a set of common characteristics. The following report profiles El Camino College on several academic performance measures compared with 5 other California community colleges that are similar in size, composition, and regional setting. These institutions are:

- Cerritos College (Cerritos)
- Long Beach City College (LBCC)
- Mt. San Antonio College (Mt. SAC)
- Pasadena City College (PCC)
- Santa Monica College (SMC)

These colleges are all large, urban/suburban, ethnically diverse, and in single-college districts. They represent colleges in the Los Angeles area El Camino considers its core peer group.

The academic performance measures provided in this report include the following:

- Course Retention and Success
- One Year Persistence
- Completions (degrees or transfer-preparedness)
- Transfers to UC/CSUs
- Degrees Conferred at UC/CSUs

The report begins with enrollment trend information to serve as a backdrop for the academic measures. El Camino College is highlighted in blue in each table and represents the magenta squares in each graph. The sources of data are the federal Integrated Postsecondary Education Data System (IPEDS), California State University (CSU), California Postsecondary Education Commission (CPEC), and the California Community College Chancellor's Office (CCCCO).

Executive Summary

The academic performance of El Camino College students compared with those of its closest peers is fairly consistent and central. On most measures, ECC students tended to perform better than Long Beach City College and Cerritos College and not as well as the other three. An exception to this general observation is one year persistence, where ECC consistently rates towards the top. ECC also ranks third in the rate of UC transfers along with Mt. SAC. The area where ECC performs the lowest is under course success—ECC success and retention rates are at the bottom of the peer group with Long Beach City College.

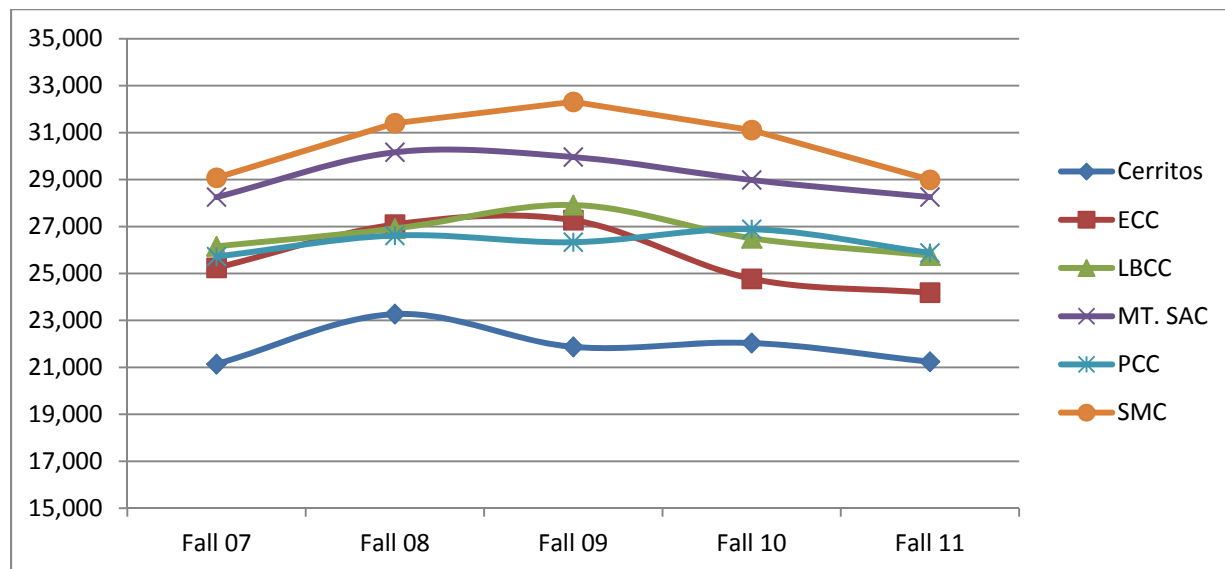
Enrollment Profile

Headcount enrollments for all colleges in Fall 2011 are similar to levels seen in Fall 2007. Mt. San Antonio, Pasadena, and Cerritos have remained steady during the five year period. El Camino, Long Beach, and Santa Monica experienced growth in 2008 and 2009, but have experienced a decline in 2010 and 2011. This indicates that there has been little change in the number of students served by the peer colleges.

Enrollment Trends (Headcount): Fall 2007 to Fall 2011

	Fall 07	Fall 08	Fall 09	Fall 10	Fall 11
Cerritos	21,142	23,270	21,874	22,040	21,239
<i>ECC</i>	<i>25,241</i>	<i>27,085</i>	<i>27,271</i>	<i>24,775</i>	<i>24,183</i>
LBCC	26,159	26,913	27,917	26,502	25,768
MT. SAC	28,255	30,163	29,961	28,982	28,253
PCC	25,719	26,621	26,332	26,887	25,877
SMC	29,080	31,402	32,313	31,110	28,993

Source: CCCC MIS



Retention & Success in Courses

Retention and Success are common indicators of general academic success in courses. Retention is defined as the percentage of students enrolled in courses at census who complete the course without withdrawing (includes all grades and non-W incompletes). Success, as defined by the California Community College Chancellor's Office is the percentage of students who receive a grade of A, B, C or CR out of all students enrolled at census. In the tables below, the peer group low is indicated with a red highlight and the peer group high is indicated with a blue shaded background for each term.

Over the past five years, *retention* rates for each of the schools increased, though Mt. SAC and Pasadena are declining over the past couple of years. Despite the recent decline, these two schools maintain the highest retention rates of the peer group. El Camino stands in the bottom three and maintained the lowest retention rate of the group for Fall 2011. All peer schools improved *success* rates over the past 5 years. Cerritos made the largest increase, rising from the lowest in 2007 to the second highest in 2011. Like with retention rates, El Camino is consistently in the bottom three in terms of success rates.

Course Retention Rates: Fall 2007 to Fall 2011

Institution	Fall 07	Fall 08	Fall 09	Fall 10	Fall 11	Trend
Cerritos College	77.4%	79.3%	81.2%	81.5%	84.1%	
<i>El Camino College</i>	<i>77.1%</i>	<i>80.5%</i>	<i>81.6%</i>	<i>81.3%</i>	<i>81.7%</i>	
Long Beach City College	73.7%	76.2%	82.3%	83.1%	84.4%	
Mt. San Antonio College	82.3%	83.5%	86.1%	87.5%	86.2%	
Pasadena City College	83.0%	84.9%	87.2%	86.5%	86.7%	
Santa Monica College	81.3%	81.6%	83.3%	84.4%	85.3%	

Source: CCCC MIS

Course Success Rates: Fall 2007 to Fall 2011

Institution	Fall 07	Fall 08	Fall 09	Fall 10	Fall 11	Trend
Cerritos College	61.5%	62.9%	66.2%	67.8%	70.4%	
<i>El Camino College</i>	<i>62.7%</i>	<i>63.4%</i>	<i>66.3%</i>	<i>67.0%</i>	<i>67.4%</i>	
Long Beach City College	62.2%	63.4%	63.6%	66.3%	67.3%	
Mt. San Antonio College	64.4%	66.4%	67.9%	69.3%	69.3%	
Pasadena City College	65.6%	68.3%	71.0%	71.2%	71.3%	
Santa Monica College	64.4%	65.1%	66.7%	68.3%	68.8%	

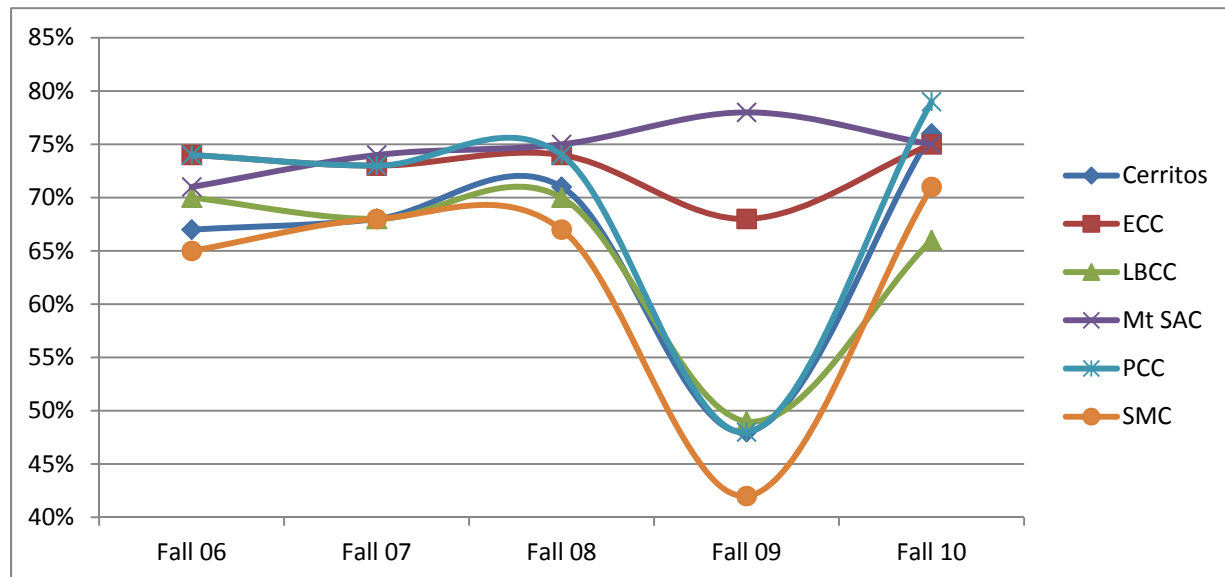
Source: CCCC MIS

One Year Persistence

The one year persistence rate is the percentage of fall term first time, full-time degree, certificate or transfer-oriented students who enroll in classes the subsequent fall term. Data from IPEDS is presented for five years of our study; however, data for 2009 appears to be flawed as several schools show a 25-point decline in persistence.

Ignoring the 2009 data, El Camino has been consistent in its persistence rates. The college is in the top three every year at bringing students back to continue their education.

One Year Persistence Rates: First Year Full-Time Students



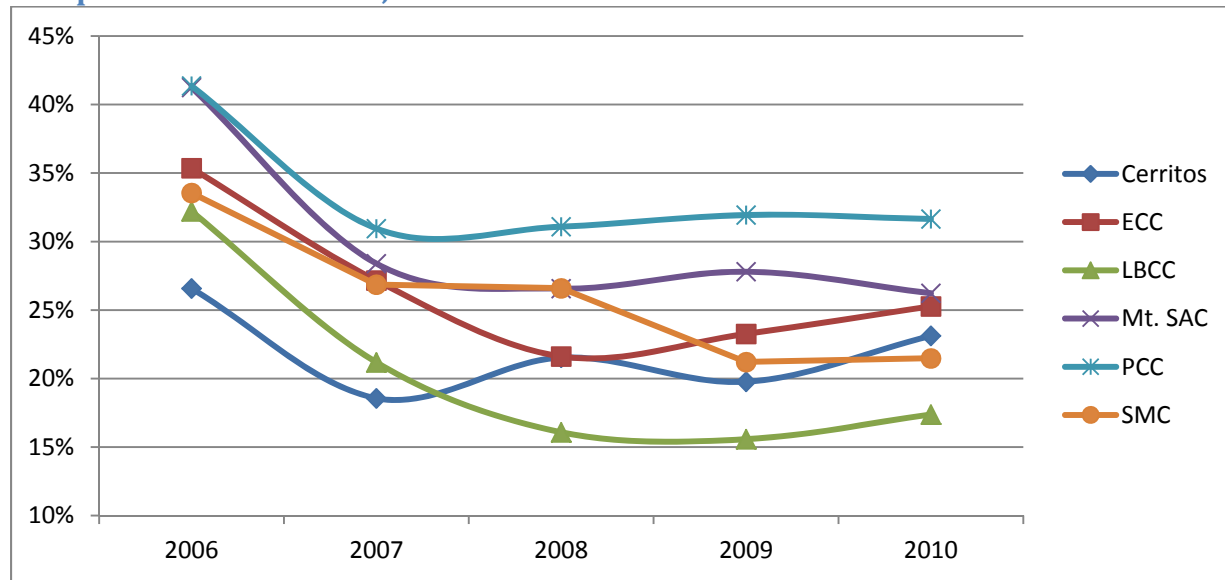
Source: IPEDS

Completions (150% Time)

The IPEDS definition of a “completer” is a student who entered college on full-time status with a goal to receive a degree or certificate. This report looks at “150% completers” which means the student was able to fulfill the goal within three years of entry into the college.

El Camino is again in the middle of the pack in terms of 150% Completions. Pasadena and Mt. SAC are at the top of the group. There is a sharp decline in completions for all schools between 2006 and 2008, likely due to a systematic change as the CCCCO began to implement changes based on Title 5 recommendations to discontinue certificates of less than 12 units.

Completions of First time, Full-Time Students: 2006-2010



Source: IPEDS

Transfer Destinations

Transfer destinations have been tracked where possible by the California Postsecondary Education Commission (CPEC) through the 2009-10. Data for 2010-11 is available through the CCC Chancellor's Office. This section lists the transfer numbers to both the UC and CSU systems. Specific universities are provided in the Degrees section of this report. Private university destinations were not yet reliably available from CPEC. CPEC is no longer funded so the most recent data comes from the CSU and the CCC Chancellor's Office.

El Camino College ranks variably third or fourth in numbers of transfers to UCs with Mt. SAC and third in the number of transfers to CSUs. Transfers to UCs have seen some moderate growth across the group but overall, the trends appear steady. Transfers to CSUs declined for all schools in 09-10.

Transfers to All UCs (Systemwide): 2006-2007 to 2010-2011

Source Institution	2006-07	2007-08	2008-09	2009-10	2010-11	Trend
Cerritos College	155	147	158	197	168	-----
<i>El Camino College</i>	<i>272</i>	<i>323</i>	<i>296</i>	<i>377</i>	<i>377</i>	-----
Long Beach City College	102	84	74	95	81	-----
Mt. San Antonio College	326	290	332	318	396	-----
Pasadena City College	532	551	565	610	642	-----
Santa Monica College	981	932	919	1,053	1,009	-----

Source: CPEC and CCCCO MIS

Transfers to All CSUs (Systemwide): 2006-2007 to 2010-2011

Source Institution	2006-07	2007-08	2008-09	2009-10	2010-11	Trend
Cerritos College	806	832	807	594	851	
<i>El Camino College</i>	<i>1,158</i>	<i>1,161</i>	<i>1,031</i>	<i>871</i>	<i>1,181</i>	
Long Beach City College	844	881	790	813	1,057	
Mt. San Antonio College	1,264	1,267	1,258	759	1,350	
Pasadena City College	1,292	1,274	1,222	808	1,278	
Santa Monica College	1,121	1,179	1,011	780	1,054	

Source: CSU and CCCC MIS

Four-Year Degree Completion

CPEC also provides information on degrees received based on source college and destination university. The first table below provides a count of degrees for all UCs. CPEC does not maintain more recent data than the 2009-10 academic year. UC system data has not been updated past 2008-09 so this represents the most current UC graduation data available for Community College transfers. The second table lists only CSUs in Los Angeles and surrounding regions for simplicity and is taken from the CSU system. This represents degrees conferred during the 2010-11 academic year. CPEC data could have been used to maintain time frame consistency with the UC's but CSU degree data for Mt. SAC transfers was missing for the 2009-10-and would have been less informative. Degrees do not represent a starting cohort but rather the number of awards given to students from feeder colleges within a given school year so rates cannot be accurately calculated.

El Camino College is in the middle in terms of UC degrees received. The largest count by far for all the peer group colleges is UCLA, followed by Irvine.

The top receiving CSU for the peer group is Long Beach State followed by CSU Los Angeles, and Northridge (CSUN). Dominguez Hills and Long Beach graduated the largest number of El Camino College students.

Degrees Received at University of California (UC) Institutions—Statewide Students Transferring from Peer Group Community Colleges Degrees conferred: 2010

Source Institution	Brkly	Davis	Irvine	LA	Merced	Rvrsd	SD	SB	SC	UC
Cerritos College	14	1	35	39	2	16	12	11	3	133
<i>El Camino College</i>	<i>33</i>	<i>4</i>	<i>41</i>	<i>127</i>	<i>0</i>	<i>12</i>	<i>28</i>	<i>26</i>	<i>10</i>	281
Long Beach City College	8	2	15	27	0	3	2	6	3	66
Mt. San Antonio College	47	6	56	88	0	37	31	15	1	281
Pasadena City College	70	10	87	191	1	40	81	22	10	512
Santa Monica College	97	20	77	548	1	19	93	54	22	931

Source: CPEC

**Degrees Received at California State University (CSU) Institutions
Students Transferring from Los Angeles Area Peer Group Community Colleges
Degrees conferred: 2010-11**

Source Institution	DH	Full	LA	LB	CSUN	Pom	SD	Total
Cerritos College	118	127	93	227	7	42	4	638
<i>El Camino College</i>	<i>291</i>	<i>61</i>	<i>59</i>	<i>343</i>	<i>49</i>	<i>20</i>	<i>23</i>	<i>906</i>
Long Beach City College	158	54	33	388	12	21	3	703
Mt. San Antonio College	20	308	126	63	15	363	12	995
Pasadena City College	17	51	409	59	196	194	11	994
Santa Monica College	62	17	133	109	429	38	13	866

Source: CSU

Data Sources

The data sources used for this report are web-accessible and available to the public. Compiled by the National Center for Educational Statistics (NCES), IPEDS data contains a variety of demographic, enrollment, performance and staffing data on US institutions of higher education.

The CPEC website also has a wealth of information on high school graduates, and college and university destinations. Automatic as well as customizable data downloads and reports are available. The data is useful for studies of pathways students take in their education. CPEC funding has been discontinued so newer data must be compiled from the UC, CSU, and CCCC systems directly.

Links for all of these features are below:

CSU Community College Transfers

<http://www.calstate.edu/as/ccct/index.shtml>

UC Statfinder

<http://statfinder.ucop.edu/>

CCCCO MIS Transfer Data

<http://extranet.cccco.edu/Divisions/StudentServices/Transfer/TransferData.aspx>

IPEDS Data Center

<http://nces.ed.gov/ipeds/datacenter/InstitutionByName.aspx>

CPEC On-line Data

<http://www.cpec.ca.gov/SecondPages/DetailedData.asp>