

# Compton College 1<sup>st</sup> Los Angeles County Supervisorial District 2022 Report Card for Constituents

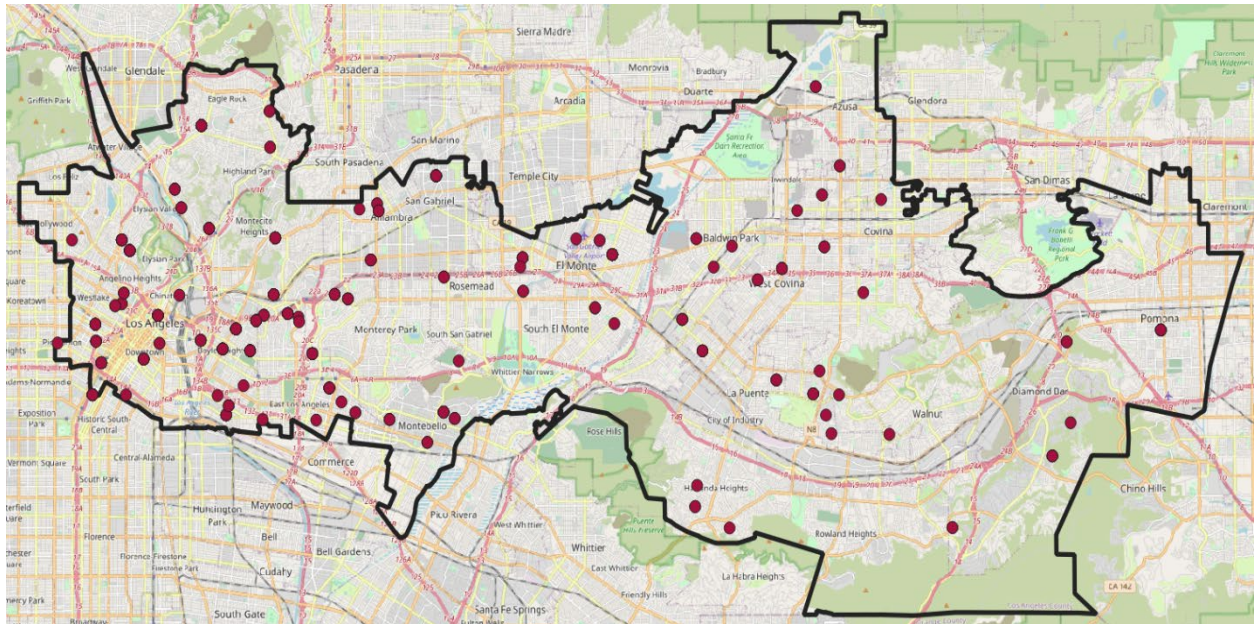


Figure 1. Visualization of each enrolled Compton College student within the 1<sup>st</sup> Los Angeles County Supervisorial District in 2021-2022.

# Compton College

## Report Card for Constituents

### Definitions and Explanations

---



Student address records were pulled from the local student information system. Then, student records were compared with 2021-2022 Management Information Systems (MIS) referential enrollment data from the California Community College Chancellor's Office (CO). The resulting records were processed with graphic software to produce latitude and longitude for each student. This information was mapped using QGIS software, and then combined with additional MIS data fields to complete the metrics described below. Overall student counts should be interpreted based upon the data sources used in the calculations.

Number of Students – The distinct headcount of students within a term who enroll in a course. Students may be represented multiple times across terms.

Placement – Taking transfer-level math and English is essential for college students. Percentages reflect the number of students who enroll in transfer-level math and English of the total number of students enrolled in math and English courses in Fall 2021.

Demographics – The percentage of students from the district with given demographic characteristics, compared to the overall percentage of Compton College students with those characteristics. All demographic data reflects students from the 2021-2022 academic year.

Enrollment Level – The count and percentage of students enrolled full-time (12 or more units) or part-time (less than 12 units) during the fall or spring terms.

Persistence Rate – The count and percentage of students who enrolled in fall 2021 and again in spring 2022.

Success Rate – The percentage of enrollments that produce a passing grade (A, B, C, or Pass) for a course over all enrollments.

Retention Rate – The percentage of students who remain enrolled in their courses without withdrawing, regardless of the grade they receive.

Majors – Rank of majors based on the number of Compton College students from the district who have declared these majors as their area of study.

Guided Pathway Divisions-Count of students enrolled by their Guided Pathway Division based upon major.

Basic Need Supports- Count of students who newly accessed basic need supports in 2021-2022. Technology includes laptop, Wi-Fi, calculators, or headsets. Food includes CalFresh referrals, Everytable, and Uber Eats. Grants includes Edquity and emergency grants. Housing includes Coalition for Responsible Community Development housing referrals.

Median Earning Changes – The change in earnings between the second quarter prior to the academic year of entry (2019-2020) and the second quarter after the academic year of exit among all students who exited Compton College (and who did not transfer to any other postsecondary institution).

Working in Field of Study- The proportion of CTE outcomes survey respondents who say they are working in a job very closely or closely related to their field of study (2018-2019).

Attained the Living Wage- Among all students who exited the community college system and who did not transfer to any postsecondary institution, the proportion who attained the district county living wage for a single adult measured immediately following the academic year of exit (2019-2020).

Occupational Projections – This information reflects employment data obtained from EMSI ([www.economicmodeling.com](http://www.economicmodeling.com)) for Compton College's Metropolitan Statistical Area (MSA) of Los Angeles, Long Beach, and Anaheim. Data points include the annual job openings in 2021, the projected job openings in 2031, the percent change over time, and the median hourly earnings. The report offers these projections by the top ten 2021 job counts.

# Compton College

## 1<sup>st</sup> Los Angeles County Supervisorial District

### 2022 Report Card for Constituents



#### Total Number of Students

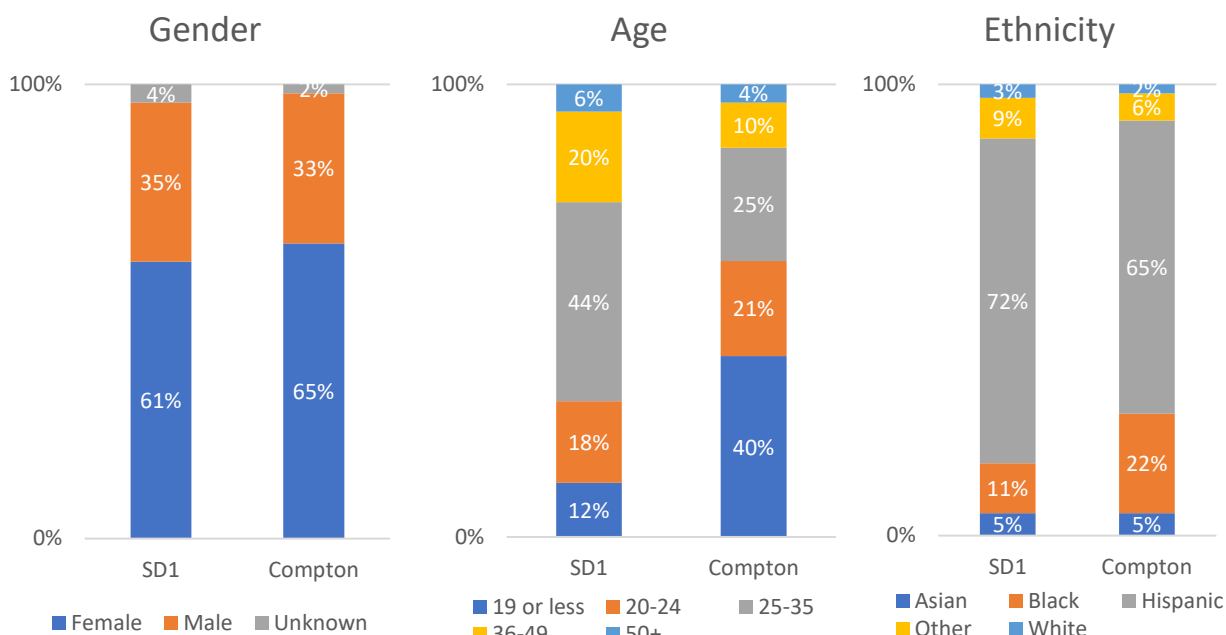
	2017-2018	2018-2019	2019-2020	2020-2021	2021-2022
# Students	761	660	533	338	95



#### Course Enrollments in Gateway Courses (Fall 2021)

Level	1 <sup>st</sup> Supervisorial District		Compton College	
	Math	English	Math	English
Transfer Level	75%	100%	75%	98%
Below Transfer	25%	0%	25%	2%

#### 2021-2022 Enrollment Demographics



#### Enrollments Level (2021-2022)

Full/Part	1 <sup>st</sup> District		Compton College
	#	%	
Full-time (12+)	25	24%	16%
Part-time (<12)	78	76%	84%

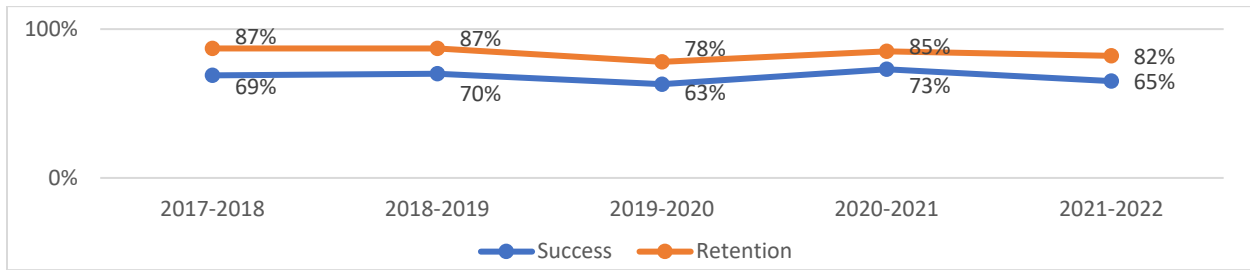
\* Includes separate Fall and Spring records for students enrolled in 2021-2022 school year.

#### Persistence Rate (2021-2022)

Term	1 <sup>st</sup> District		Compton College
	#	%	
Fall 2021-Spring 2022	28	50%	64%

\*Based on student enrolled in Fall 2021.

### Academic Success and Retention Rates



### Degrees and Certificates Awarded

Program Award	2017-2018	2018-2019	2019-2020	2020-2021	2021-2022
Degrees/Certificates	19	17	11	41	14

### Top 10 Majors for the 1st District

1. Nursing
2. Business Administration
3. Arts and Humanities
4. Child Development
5. Computer Information Systems
6. Computer Systems Application
7. General Studies
8. Machinist
9. Early Childhood Education
10. Kinesiology for Transfer

### Employment Outcomes (All Students)

- Compton College students experience a 17% median change in earnings when they leave the college (2019-2020).
- 79% of former Compton College students reported working in their field of study (2018-2019).
- 34% of former Compton College students attained a living wage (2019-2020).

### Guided Pathway Division (by major)

- Business & Industrial Studies – 29%
- Fine Arts, Humanities, and Communications – 12%
- Health & Public Service – 40%
- Social Science – 14%
- Science, Technology, Engineering & Math – 2%
- None (Undeclared/Unknown) – 3%

### Basic Needs Support

- Grants – 36%
- Technology – 11%
- Food – 15%
- Housing – 7%

### Occupation Projections for the Compton College Service Area

Occupation	2021 Jobs	2031 Jobs	% Change	2021 Median Hourly Earnings
Office and Administrative Support Occupations	786,880	742,304	-6%	\$21.32
Transportation and Material Moving Occupations	541,062	564,165	4%	\$17.69
Management Occupations	498,821	517,326	4%	\$52.74
Healthcare Support Occupations	487,361	639,715	31%	\$14.31
Educational Instruction and Library Occupations	395,442	422,169	7%	\$31.90
Healthcare Practitioners and Technical Occupations	351,721	392,453	12%	\$47.25
Arts, Design, Entertainment, Sports, and Media Occupations	265,772	296,744	12%	\$30.60
Personal Care and Service Occupations	211,425	219,645	4%	\$15.13
Installation, Maintenance, and Repair Occupations	187,457	184,791	-1%	\$25.16
Computer and Mathematical Occupations	183,635	197,205	7%	\$46.62