

High School Enrollment Trends El Camino Community College District and Local Area High Schools 2000-01 to 2009-10

This report profiles recent enrollment trends from local area high schools. Featured schools include those in the Centinela Valley (Hawthorne area), Inglewood, Manhattan Beach, Redondo and Torrance districts along with El Segundo, Gardena and Narbonne High Schools. The last two are schools outside the El Camino College (ECC) district that feed larger enrollments to the college. The first table below summarizes trends for all high schools in the study. Each high school or district is featured separately below.

Enrollment trends are tracked in this report from 2000-01 through 2008-09, with estimates provided for 2009-10. Source data for these trends are from the California Department of Education, Educational Demographics Unit. Recent graduate enrollment figures are quoted from the California Postsecondary Education Commission (CPEC).

Executive Summary

During the last 8 years, high schools in the ECC district experienced steady growth of between 2% and 4% for four years followed by a recent plateau. There was a slight decrease for 08-09 with modest increases expected after the current year, depending on external factors.

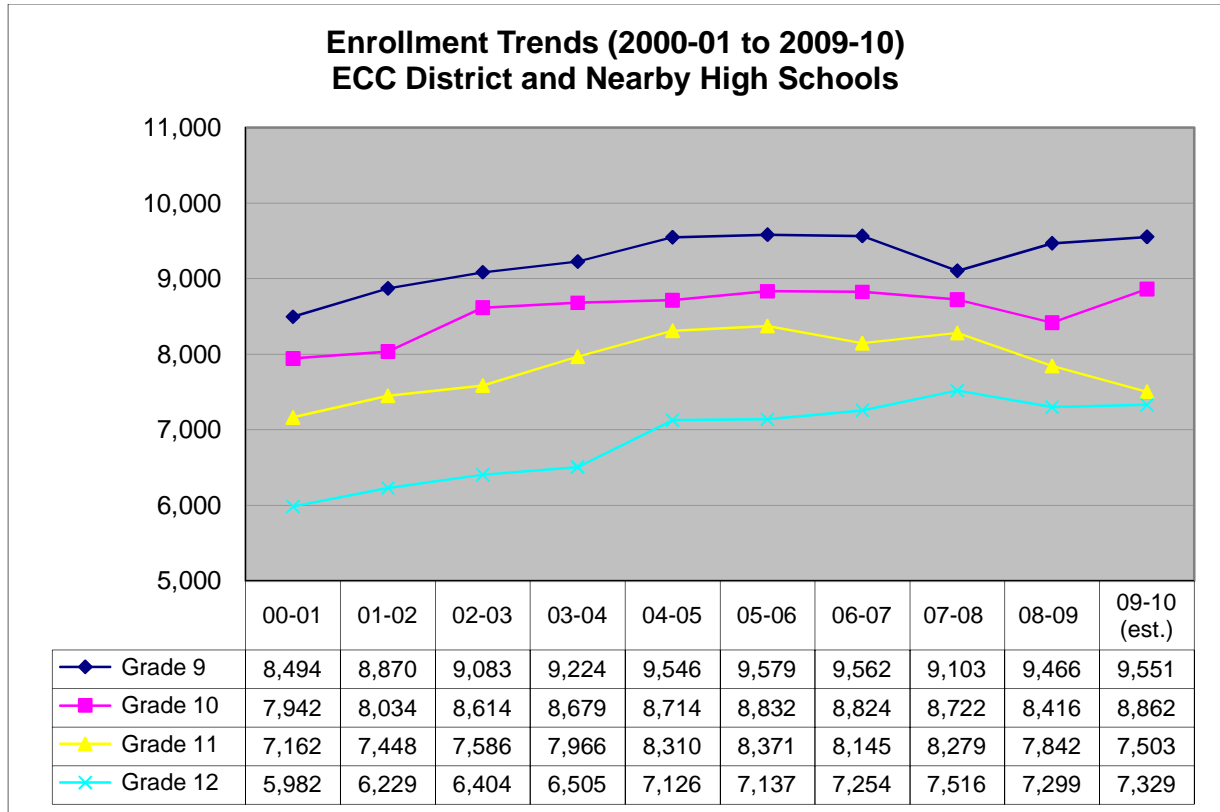
Enrollment at most schools in the district is holding fairly stable with only slight growth or decline over the past 3 years. These schools include: El Segundo, Mira Costa, Narbonne, Redondo and Torrance.

The remaining schools show stronger growth or decline patterns. The school with the strongest growth is Gardena High, with nearly 3% average annual growth over the past 4 years. Those with recent declines are Inglewood High and schools in the Centinela Valley district (Hawthorne, Lawndale, Leuzinger). Peak enrollments occurred in 2005-06 for Inglewood and 2004-05 for Centinela Valley.

Elementary and middle schools that feed into the district high schools have experienced steady declines in enrollment since 2004, further evidence of the declines expected at the high school level in the next few years.

District-wide Trends

Local high school enrollments have been fairly stable since 2004-05 with a few exceptions. In 2008-09, grade 11 enrollments declined by over 400 students and there was a decline in grade 12 enrollments by about 200 students. In contrast, grade 9 grew by nearly 400 students due to higher grade 8 enrollments in the area.



District and High School Trends

Breaking out the enrollment trends by district and high school paints a more varied picture with some schools/districts growing or remaining stable while others decline. The following tables provide enrollment levels by high school or district with the percentage annual change at the bottom of each.

Centinela Valley High School District

Centinela Valley district includes Hawthorne, Lawndale and Leuzinger High Schools. Hawthorne and Leuzinger are especially large schools and major feeders to ECC. Centinela saw stable, even dramatic growth between 2000 and 2005, followed by small to moderate declines in the past three years. Declines are expected to continue through 2009-10 but at a slower rate.

	2000-01	2001-02	2002-03	2003-04	2004-05	2005-06	2006-07	2007-08	2008-09	2009-10 (est.)
Grade 9	1,959	1,946	2,199	2,081	2,218	2,295	2,111	1,963	1,893	1,875
Grade 10	1,963	1,945	1,962	2,154	2,102	2,032	2,089	2,068	1,870	1,800
Grade 11	1,631	1,730	1,781	1,779	1,976	1,923	1,785	1,917	1,921	1,736
Grade 12	1,364	1,432	1,534	1,551	1,811	1,727	1,586	1,686	1,623	1,624
Total	6,917	7,053	7,476	7,565	8,107	7,977	7,571	7,634	7,307	7,035
% Change		2.0%	6.0%	1.2%	7.2%	-1.6%	-5.1%	0.8%	-4.3%	-3.7%

El Segundo High School

El Segundo High School is located at the far north section of the ECC district. It sends relatively few students to El Camino College each year. El Segundo has experienced continued moderate growth from 2000 to 2006. There was a slight dip in enrollment in 2007-08 and 2008-09. This dip should not appreciably affect recruitment efforts at the high school.

	2000-01	2001-02	2002-03	2003-04	2004-05	2005-06	2006-07	2007-08	2008-09	2009-10 (est.)
Grade 9	263	277	280	315	330	307	316	324	304	307
Grade 10	260	269	277	286	311	336	314	322	324	303
Grade 11	269	264	267	274	284	322	331	311	328	326
Grade 12	244	262	271	271	274	274	299	312	317	319
Total	1,036	1,072	1,095	1,146	1,199	1,239	1,260	1,269	1,248	1,255
% Change		3.5%	2.1%	4.7%	4.6%	3.3%	1.7%	0.7%	-1.7%	0.6%

Gardena High School

Gardena High School is closely situated and is a major feeder to the college. Gardena has averaged about 4% growth in the past 6 years. The high school should grow by nearly 7% in 2009-10 due to consistent past growth and a larger freshman class in 2008-09. However, the 2009 graduating class is expected to be considerably smaller due to declines in grades 10-12.

	2000-01	2001-02	2002-03	2003-04	2004-05	2005-06	2006-07	2007-08	2008-09	2009-10 (est.)
Grade 9	980	1,064	962	1,055	992	1,117	1,381	917	1,438	1,510
Grade 10	816	845	932	848	986	879	842	988	716	1,123
Grade 11	634	654	743	671	792	886	738	743	546	396
Grade 12	464	474	504	551	570	496	453	555	461	339
Total	2,894	3,037	3,141	3,125	3,340	3,378	3,414	3,203	3,161	3,367
% Change		4.9%	3.4%	-0.5%	6.9%	1.1%	1.1%	-6.2%	-1.3%	6.5%

Inglewood District

The Inglewood Unified School District consists of Inglewood and Morningside High Schools. These schools are modest feeders to ECC, likely due to their northerly location in the district. Inglewood district has seen a mix of growth and decline from 2000 to 2005. The most dramatic decline occurred in 2006-07 and modest declines followed in 2007-08 and 2008-09, given 8th and 9th grade enrollment levels for the last two years. Nearly 60 fewer prospects are expected.

	2000-01	2001-02	2002-03	2003-04	2004-05	2005-06	2006-07	2007-08	2008-09	2009-10 (est.)
Grade 9	1,073	1,200	1,085	1,045	1,069	1,080	1,004	1,023	961	936
Grade 10	1,014	1,020	1,173	1,065	995	1,060	1,049	953	1,045	982
Grade 11	908	918	922	1,076	991	994	977	978	915	1,003
Grade 12	715	820	743	795	944	902	877	880	883	826
Total	3,710	3,958	3,923	3,981	3,999	4,036	3,907	3,834	3,804	3,747
% Change		6.7%	-0.9%	1.5%	0.5%	0.9%	-3.2%	-1.9%	-0.8%	-1.5%

Manhattan Beach District

The Manhattan Beach Unified School District consists of Mira Costa High School. The school is a moderate feeder to ECC. Over 60 new graduates enter El Camino College each year. Mira Costa also has experienced a mix of growth and decline, but recent larger grade 8-9 classes predict moderate growth in 2009-10.

	2000-01	2001-02	2002-03	2003-04	2004-05	2005-06	2006-07	2007-08	2008-09	2009-10 (est.)
Grade 9	590	636	690	602	623	527	603	628	617	665
Grade 10	591	598	628	680	603	613	532	618	638	627
Grade 11	526	569	571	581	630	565	592	532	614	634
Grade 12	505	511	535	533	546	593	557	606	534	616
Total	2,212	2,314	2,424	2,396	2,402	2,298	2,284	2,384	2,403	2,542
% Change		4.6%	4.8%	-1.2%	0.3%	-4.3%	-0.6%	4.4%	0.8%	5.8%

Narbonne High School

Narbonne High School is a moderate distance away from ECC and has historically been a strong feeder school. Narbonne experienced solid growth from 2000 to 2006 with one exception (2005-06). In 2007-08, there was zero growth and a moderate decline in enrollment in 2008-09. This translates into about 60 less prospects in 2009.

	2000-01	2001-02	2002-03	2003-04	2004-05	2005-06	2006-07	2007-08	2008-09	2009-10 (est.)
Grade 9	1,084	1,064	1,091	1,222	1,374	1,214	1,231	1,289	1,391	1,410
Grade 10	693	808	918	885	854	965	984	896	838	904
Grade 11	586	598	652	729	689	668	764	783	669	626
Grade 12	455	445	412	471	499	550	461	471	426	364
Total	2,818	2,915	3,073	3,307	3,416	3,397	3,440	3,439	3,322	3,304
% Change		3.4%	5.4%	7.6%	3.3%	-0.6%	1.3%	0.0%	-3.4%	-0.5%

Redondo Beach District

The Redondo Beach Unified School District consists of Redondo Union and Redondo Shores High Schools. Redondo Union is a major feeder school to ECC. The Redondo district has seen continued modest growth in the recent past with one exception (2007-08). With the 0.9% growth in 2008-09, 10 additional prospects are expected for fall 2009.

	2000-01	2001-02	2002-03	2003-04	2004-05	2005-06	2006-07	2007-08	2008-09	2009-10 (est.)
Grade 9	552	560	554	667	668	680	665	665	684	689
Grade 10	597	551	560	542	634	662	661	647	666	685
Grade 11	488	580	531	569	532	641	704	658	668	688
Grade 12	450	489	561	526	548	519	751	708	684	694
Total	2,087	2,180	2,206	2,304	2,382	2,502	2,781	2,678	2,702	2,756
% Change		4.5%	1.2%	4.4%	3.4%	5.0%	11.2%	-3.7%	0.9%	2.0%

Torrance District

The Torrance Unified School District includes Torrance, North, South and West High Schools, all major feeder schools with Torrance sending the most recent graduates. Schools in the Torrance district have experienced continued modest growth from 2000 to 2007. However, enrollments dipped in 2008-09, slightly reducing the number of prospects expected for fall 2009.

	2000-01	2001-02	2002-03	2003-04	2004-05	2005-06	2006-07	2007-08	2008-09	2009-10 (est.)
Grade 9	1,993	2,123	2,222	2,237	2,272	2,359	2,251	2,293	2,181	2,158
Grade 10	2,008	1,998	2,164	2,219	2,229	2,285	2,353	2,226	2,319	2,438
Grade 11	2,120	2,135	2,119	2,287	2,416	2,372	2,254	2,342	2,182	2,094
Grade 12	1,785	1,796	1,844	1,807	1,934	2,076	2,270	2,280	2,373	2,547
Total	7,906	8,052	8,349	8,550	8,851	9,092	9,128	9,141	9,055	9,237
% Change		1.8%	3.7%	2.4%	3.5%	2.7%	0.4%	0.1%	-0.9%	2.0%

Future Trends

The last set of tables and charts below show enrollment trends by school level or type. Growth/decline is represented both in real counts and as percentage of change from the previous year. As noted, a recent 3-year average rate of change is also provided.

Enrollment peaked across the system in 2004-05 and has declined each year since. Kindergarten, Elementary and Middle Schools peaked in 2003-04, while high schools peaked in 2005-06.

Table 1: Total Enrollments by School Type

School Type	2000-01	2001-02	2002-03	2003-04	2004-05	2005-06	2006-07	2007-08	2008-09	2009-10 (est)
Kindergarten	4,381	4,347	4,386	4,525	4,255	4,133	4,187	4,014	4,200	4,161
Elementary	23,124	23,240	22,904	22,986	22,558	22,028	21,300	21,156	20,923	21,169
Middle	13,440	14,059	14,655	14,800	14,745	14,164	14,079	13,558	13,353	13,282
High School	29,580	30,581	31,687	32,374	33,696	33,919	33,785	33,620	33,023	33,245
Total	70,525	72,227	73,632	74,685	75,254	74,244	73,351	72,348	71,499	71,856

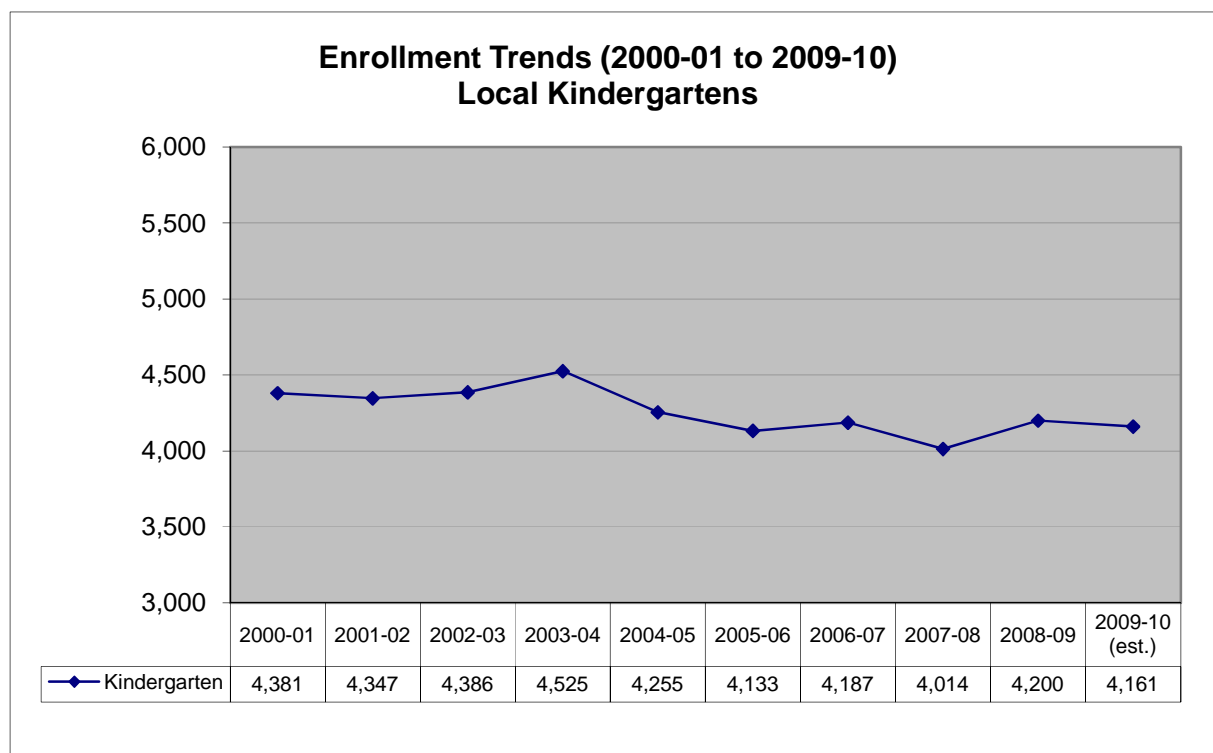
Table 2: Percentage Change from Previous Year

Grade	3-yr Avg*	2001-02	2002-03	2003-04	2004-05	2005-06	2006-07	2007-08	2008-09	2009-10 (est.)
Kindergarten	-1.9%	-0.8%	0.9%	3.2%	-6.0%	-2.9%	1.3%	-4.1%	4.6%	-0.9%
Elementary	-1.3%	0.5%	-1.4%	0.4%	-1.9%	-2.3%	-3.3%	-0.7%	-1.1%	1.2%
Middle	-1.1%	4.6%	4.2%	1.0%	-0.4%	-3.9%	-0.6%	-3.7%	-1.5%	-0.5%
High School	2.3%	3.4%	3.6%	2.2%	4.1%	0.7%	-0.4%	-0.5%	-1.8%	0.7%
Total	0.3%	2.4%	1.9%	1.4%	0.8%	-1.3%	-1.2%	-1.4%	-1.2%	0.5%

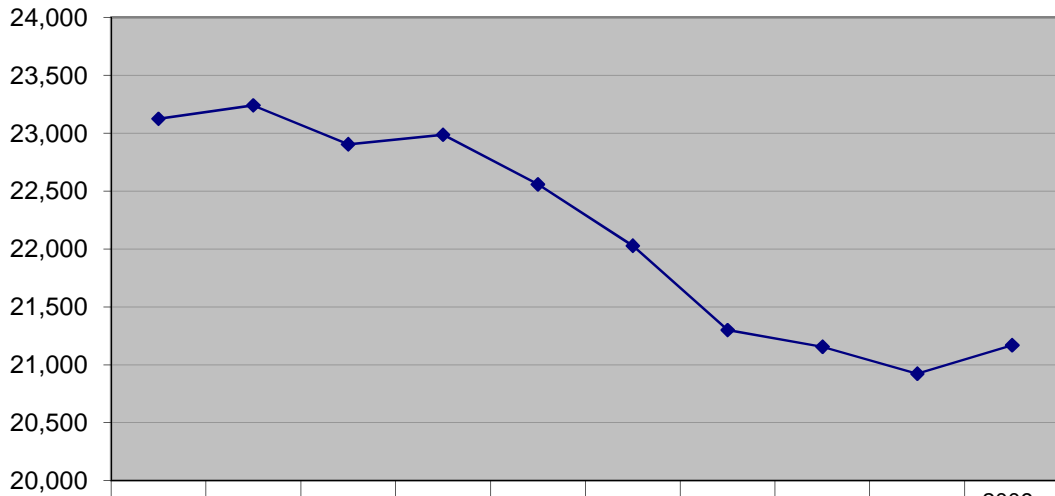
* Average change from 2004-05 through 2006-07.

The following three charts graphically display enrollment trends by each school type. With the exception of the much smaller kindergarten classes, all schools show dramatic declines in recent years, perhaps due to families with younger children moving to more affordable housing inland or out of state.

Many of the students representing the “mound” on the middle school chart (2002-03 to 2004-05) are now enrolled in local high schools. High schools will likely experience a dip as the 2005-06 and later cohorts progress through secondary education. The college should consider these declines in their long term enrollment plans.

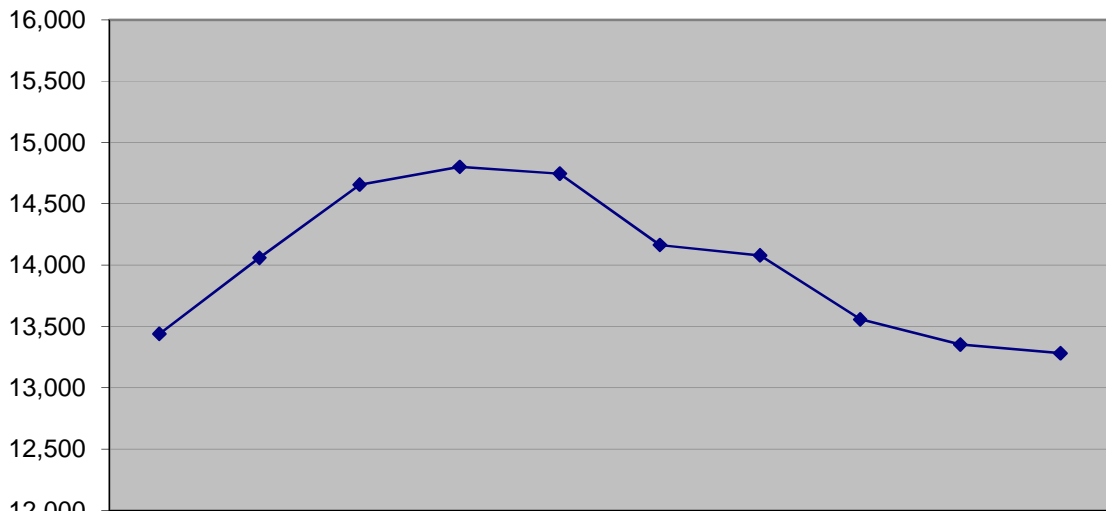


**Enrollment Trends (2000-01 to 2009-10)
Local Elementary Schools**



◆ Elementary	23,124	23,240	22,904	22,986	22,558	22,028	21,300	21,156	20,923	21,169
--------------	--------	--------	--------	--------	--------	--------	--------	--------	--------	--------

**Enrollment Trends (2000-01 to 2009-10)
Local Middle Schools**



◆ Middle	13,440	14,059	14,655	14,800	14,745	14,164	14,079	13,558	13,353	13,282
----------	--------	--------	--------	--------	--------	--------	--------	--------	--------	--------