

# Compton College 38<sup>th</sup> Congressional District 2021 Report Card for Constituents

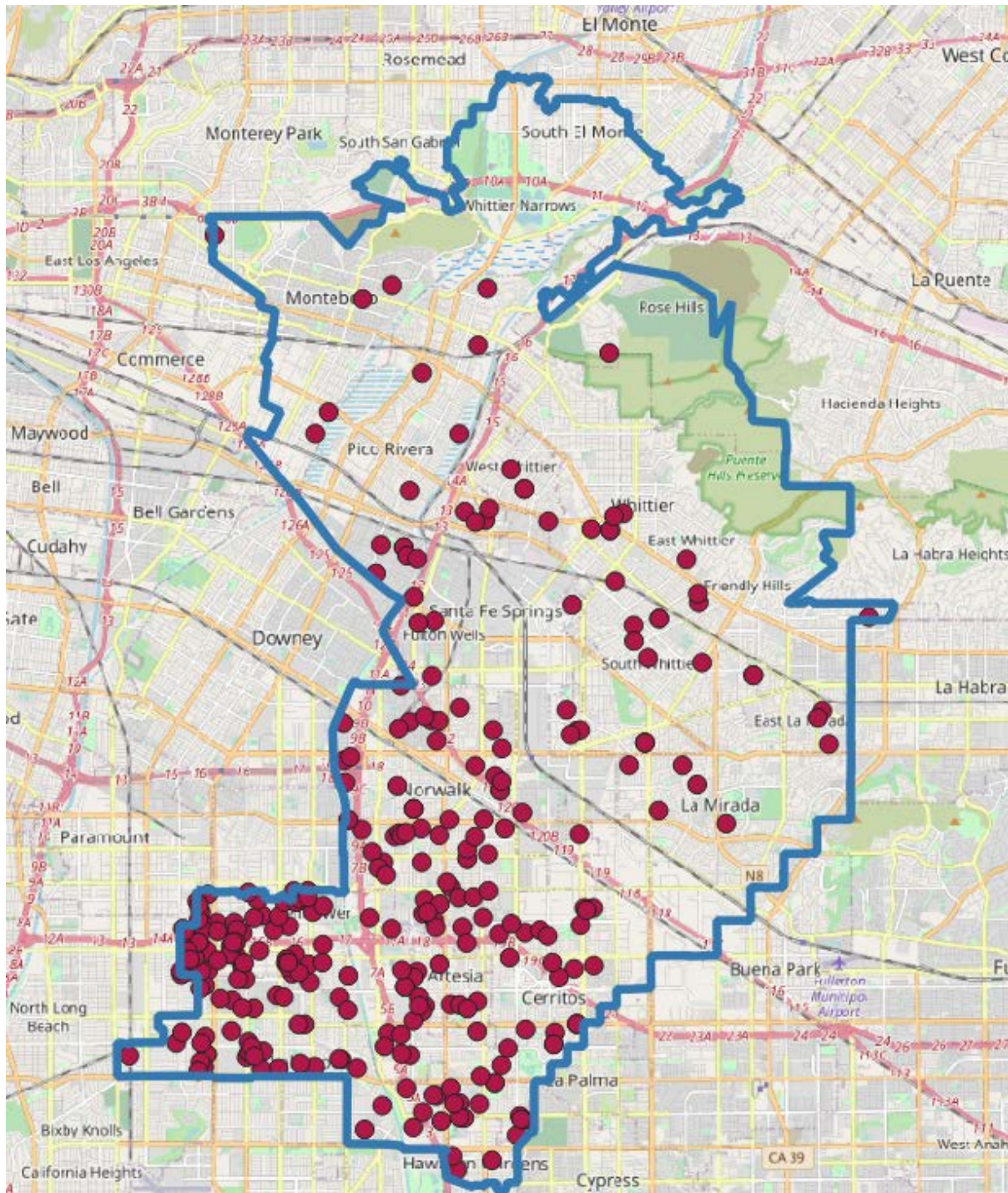


Figure 1. Visualization of each enrolled Compton College student within the 38<sup>th</sup> Congressional District.

# Compton College

## Report Card for Constituents

### Definitions and Explanations



#### Enrollment Data

Student address records were pulled from the local student information system. Then, student records were compared with 2020-2021 Management Information Systems (MIS) referential enrollment data from the California Community College Chancellor's Office (CO). The resulting records were processed with graphic software to produce latitude and longitude for each student. This information was mapped using QGIS software, and then combined with additional MIS data fields to complete the metrics described below. Overall student counts should be interpreted based upon the data sources used in the calculations.

Number of Students – The distinct count of students within a term who enroll in a course. Students may be represented multiple times across terms.

Placement – Taking transfer-level math and English is essential for college students. Percentages reflect the number of students who enroll in transfer-level math and English of the total number of students enrolled in math and English courses in Fall 2020.

Demographics – The percentage of students from the district with given demographic characteristics, compared to the overall percentage of Compton College students with those characteristics. All demographic data reflects students from the 2020-2021 academic year.

Enrollment Level – The count and percentage of students enrolled full-time (12 or more units) or part-time (less than 12 units) during the fall or spring terms.

Persistence Rate – The count and percentage of students who enrolled in fall 2020 and again in spring 2021.

#### Achievement Data

Success Rate – The percentage of enrollments that produce a passing grade (A, B, C, or Pass) for a course over all enrollments.

Retention Rate – The percentage of students who remain enrolled in their courses without withdrawing, regardless of the grade they receive.

Majors – Rank of majors based on the number of Compton College students from the district who have declared these majors as their area of study.

Median Earning Changes – The change in earnings between the second quarter prior to the academic year of entry (2018-2019) and the second quarter after the academic year of exit among all students who exited Compton College (and who did not transfer to any other postsecondary institution).

Working in Field of Study- The proportion of CTE outcomes survey respondents who say they are working in a job very closely or closely related to their field of study (2017-2018).

Attained the Living Wage- Among all students who exited the community college system and who did not transfer to any postsecondary institution, the proportion who attained the district county living wage for a single adult measured immediately following the academic year of exit (2018-2019).

Occupational Projections – This information reflects employment data obtained from EMSI ([www.economicmodeling.com](http://www.economicmodeling.com)) for Compton College's Metropolitan Statistical Area (MSA) of Los Angeles, Long Beach, and Anaheim. Data points include the annual job openings in 2021, the projected job openings in 2031, the percent change over time, and the average annual earnings. The report offers these projections by the top five forecasted 2031 job counts and then the top five occupations by growth.

# Compton College

## 38<sup>th</sup> Congressional District

### 2021 Report Card for Constituents



#### Total Number of Students

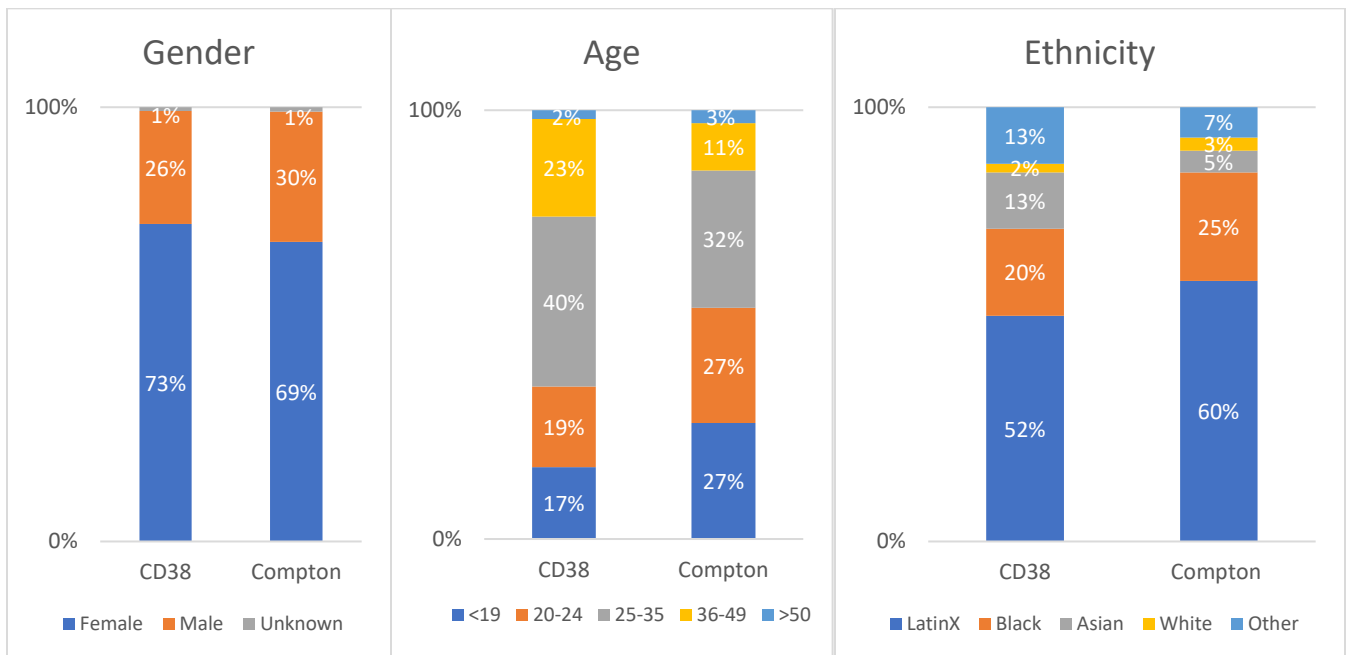
	2016-2017	2017-2018	2018-2019	2019-2020	2020-2021
# Students	692	664	591	459	313

\*Number of students who enrolled in a course within term.

#### Course Enrollments in Gateway Courses (Fall 2020)

Level	38 <sup>th</sup> Congressional District		Compton College	
	Math	English	Math	English
Transfer Level	79%	100%	69%	98%
Below Transfer	21%	0%	31%	2%

#### 2020-2021 Enrollment Demographics



#### Enrollments Level (2020-2021)

Full/Part	38 <sup>th</sup> District		Compton
	#	%	%
Full-time (12+)	76	20%	20%
Part-time (<12)	308	80%	80%

\* Includes separate Fall and Spring records for students enrolled in 2020-2021 school year.

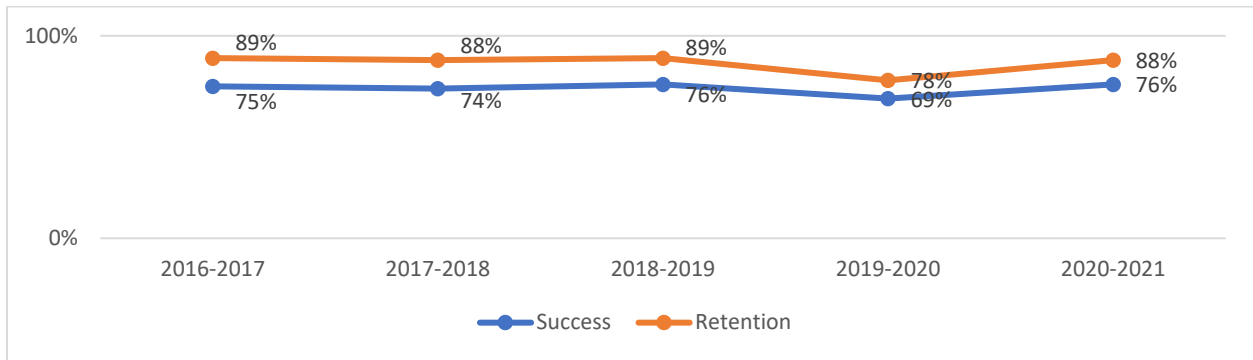
#### Persistence Rate (2020-2021)

Term	38 <sup>th</sup> District		Compton
	#	%	%
Fall 2020-Spring 2021	117	61%	63%

\*Based on student enrolled in Fall 2020.



### Academic Success and Retention Rates



### Degrees and Certificates Awarded

Program Award	2016-2017	2017-2018	2018-2019	2019-2020	2020-2021
Degrees/Certificates	28	27	29	23	22

### Top 10 Majors for the 38<sup>th</sup> District

1. Nursing
2. Biological and Physical Sciences
3. Undeclared
4. Social and Behavioral Sciences
5. Psychology for Transfer
6. General Studies
7. Nursing Upward Mobility
8. Business Administration
9. Administration of Justice
10. Business Management

### Employment Outcomes (All Students)

- Compton College students experience a 10% median change in earnings when they leave the college (2018-2019).
- 66% of former Compton College students reported working in their field of study (2017-2018).
- 36% of former Compton College students attained a living wage (2018-2019).

### Occupation Projections for the Compton College Service Area

Description	2021 Jobs	2031 Jobs	10-Year % Change	Avg. Earnings Per Job
Industrial Design Services	2,585	6,828,378	32%	\$122,977
Family Planning Centers	3,325	420,796	32%	\$51,362
Dried and Dehydrated Food Manufacturing	402	203,551	31%	\$61,987
Child and Youth Services	10,138	151,173	30%	\$52,832
Other Social Advocacy Organizations	3,901	141,286	30%	\$60,936

Table 1A. Top 5 jobs by 10-Year projection totals (i.e., 2031 Jobs).

Description	2021 Jobs	2031 Jobs	10-Year % Change	Avg. Earnings Per Job
Electric Bulk Power Transmission and Control	1,814	2,922	61%	\$197,374
Guided Missile and Space Vehicle Propulsion Unit	1,937	3,071	59%	\$163,667
Facilities Support Services	7,037	10,901	55%	\$59,453
Other Farm Product Raw Material Merchant Wholesalers	652	989	52%	\$70,939
HMO Medical Centers	42,161	62,743	49%	\$131,439

Table 1B. Top 5 jobs by 10-Year percent change.