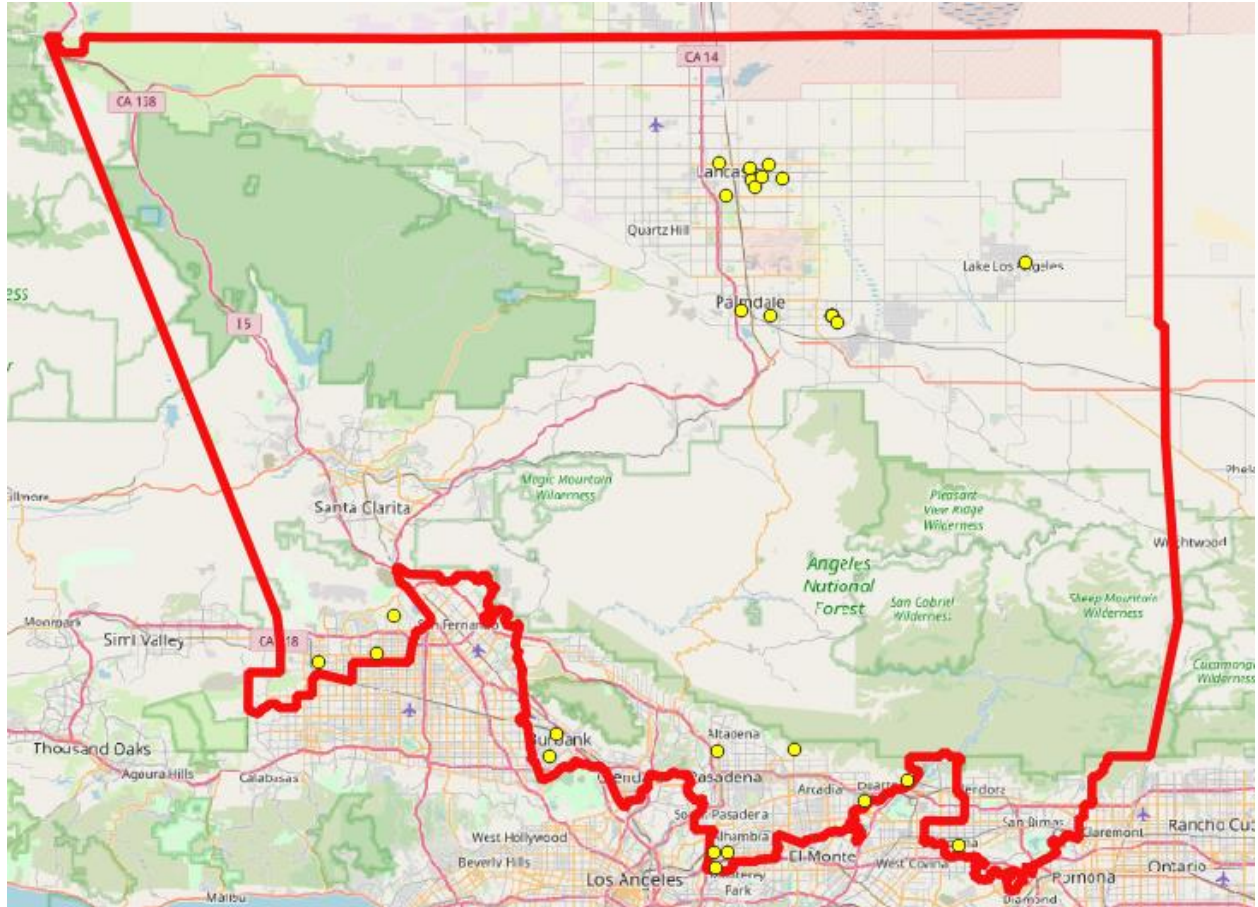


# Compton College 5th Los Angeles County Supervisorial District Report Card for Constituents (2015-2020)



# Compton College

## Report Card for Constituents (2015-2020)

### Definitions and Explanations



#### District Map

The map displays each enrolled Compton College student within the 5<sup>th</sup> Los Angeles County Supervisorial District.

#### Enrollment Data

Number of Students – The number of students is the distinct count of students within a term who enroll in a course. Students may be represented multiple times across terms.

Placement – Taking transfer-level math and English is essential for college students. The table shows the number of students who enrolled in transfer-level math and English courses. Percentages reflect the number of students who enroll in transfer-level math and English over the total number of students who enroll in math and English courses in Fall 2019.

Demographics – The percentage of students from the district with given demographic characteristics, compared to the overall percentage of Compton College students with given demographic characteristics. All demographic data reflects students from the 2019-2020 academic year.

Enrollment Level – The number of units of coursework a student enrolled in per semester. Students enrolling in 12 or more units are considered full-time. Students enrolling in less than 12 units are considered part-time.

Persistence Rate – The percentage of students who enroll in consecutive terms. Persistence from Fall 2019 to spring 2020 means students enrolled in coursework for both semesters.

#### Achievement Data

Success Rate – The percentage of enrollments that produce a passing grade (A, B, C, or Pass) for a course over all enrollments.

Retention Rate – The percentage of students who remain enrolled in their courses without withdrawing, regardless of the grade they receive.

Majors – Ranking of majors is based on the number of Compton College students from the district who have declared these majors as their area of study.

Median Earning Changes – The change in earnings between the second quarter prior to the academic year of entry (2017-2018) and the second quarter after the academic year of exit among all students who exited Compton College (and who did not transfer to any other postsecondary institution).

Working in Field of Study- The proportion of CTE outcomes survey respondents who say they are working in a job very closely or closely related to their field of study (2017-2018).

Attained the Living Wage- Among all students who exited the community college system and who did not transfer to any postsecondary institution, the proportion who attained the district county living wage for a single adult measured immediately following the academic year of exit (2017-2018).

Occupational Projections – This information reflects employment data for jobs requiring an Associate Degree obtained from EMSI for Compton College's Metropolitan Statistical Area (MSA) of Los Angeles, Long Beach, and Anaheim. Annual openings refer to the average number of positions available for the given occupation. Growth indicates the projected 10-year increase in the number of positions for the given occupation.

# Compton College

## 5<sup>th</sup> Los Angeles County Supervisorial District

### Report Card for Constituents (2015-2020)



#### Total Number of Students

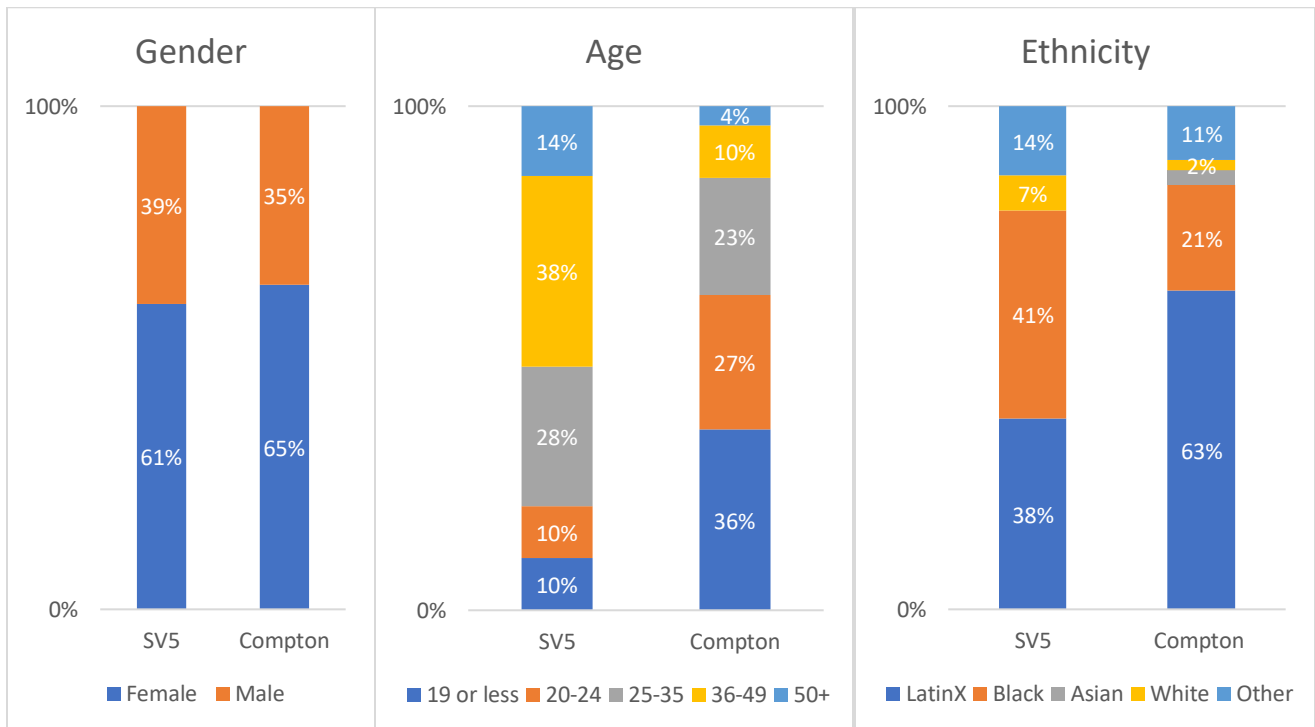
	2015-2016	2016-2017	2017-2018	2018-2019	2019-2020
# Students	81	90	70	42	35



#### Course Enrollments in Gateway Courses (Fall 2019)

Level	5 <sup>th</sup> Los Angeles County District		Compton College	
	Math	English	Math	English
Transfer Level	50%	100%	50%	88%
Below Transfer	50%	0%	50%	12%

#### 2019-2020 Enrollment Demographics



#### Enrollments Level (2019-2020)

Full/Part	5 <sup>th</sup> District		Compton College
	#	%	
Full-time (12+)	14	40%	23%
Part-time (<12)	21	60%	77%

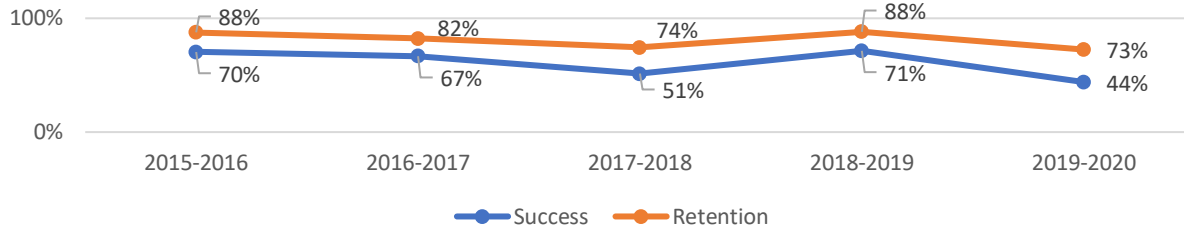
\* Includes separate Fall and Spring records for students enrolled in 2019-2020 school year.

#### Persistence Rate (2019-2020)

Term	5 <sup>th</sup> District		Compton College
	#	%	
Fall 2019-Spring 2020	6	33%	63%

\*Based on student enrolled in Fall 2019.

### Academic Success and Retention Rates



### Degrees and Certificates Awarded

Program Award	2015-2016	2016-2017	2017-2018	2018-2019	2019-2020
Degrees/Certificates	7	8	5	4	

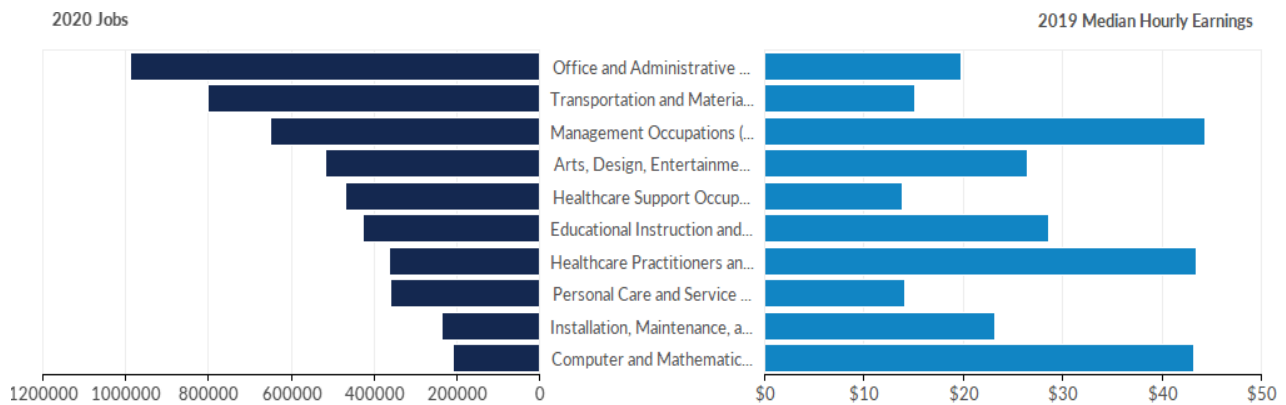
### Top 10 Majors for the 5<sup>th</sup> District

1. General Studies
2. Nursing
3. Biological & Physical Sciences
4. Kinesiology for Transfer
5. Social & Behavioral Sciences
6. Undeclared
7. Arts & Humanities
8. Auto Collision Repair
9. Administration of Justice
10. Biology

### Employment Outcomes (All Students)

- Compton College students experience a 35% median change in earnings when they leave the college (2017-2018).
- 64% of former Compton College students reported working in their field of study (2016-2017).
- 40% of former Compton College students attained a living wage (2017-2018).

### Occupation Projections for the Compton College Service Area



Occupation	2020 Jobs	2030 Jobs	% Change	2019 Median Hourly Earnings
Healthcare Support	469,683	603,180	28%	\$13.87
Healthcare Practitioners and Tech	361,844	414,250	14%	\$43.42
Transportation and Material Moving	801,105	904,595	13%	\$15.07
Personal Care and Service	358,854	391,448	9%	\$14.07
Management	649,330	701,520	8%	\$44.34
Arts, Design, Entertainment, Sports, and Media	517,504	559,574	8%	\$26.43
Computer and Mathematical	207,200	223,565	8%	\$43.17
Educational Instruction and Library	424,920	456,522	7%	\$28.55
Installation, Maintenance, and Repair	235,144	243,153	3%	\$23.12
Office and Administrative Support	988,342	986,411	0%	\$19.82