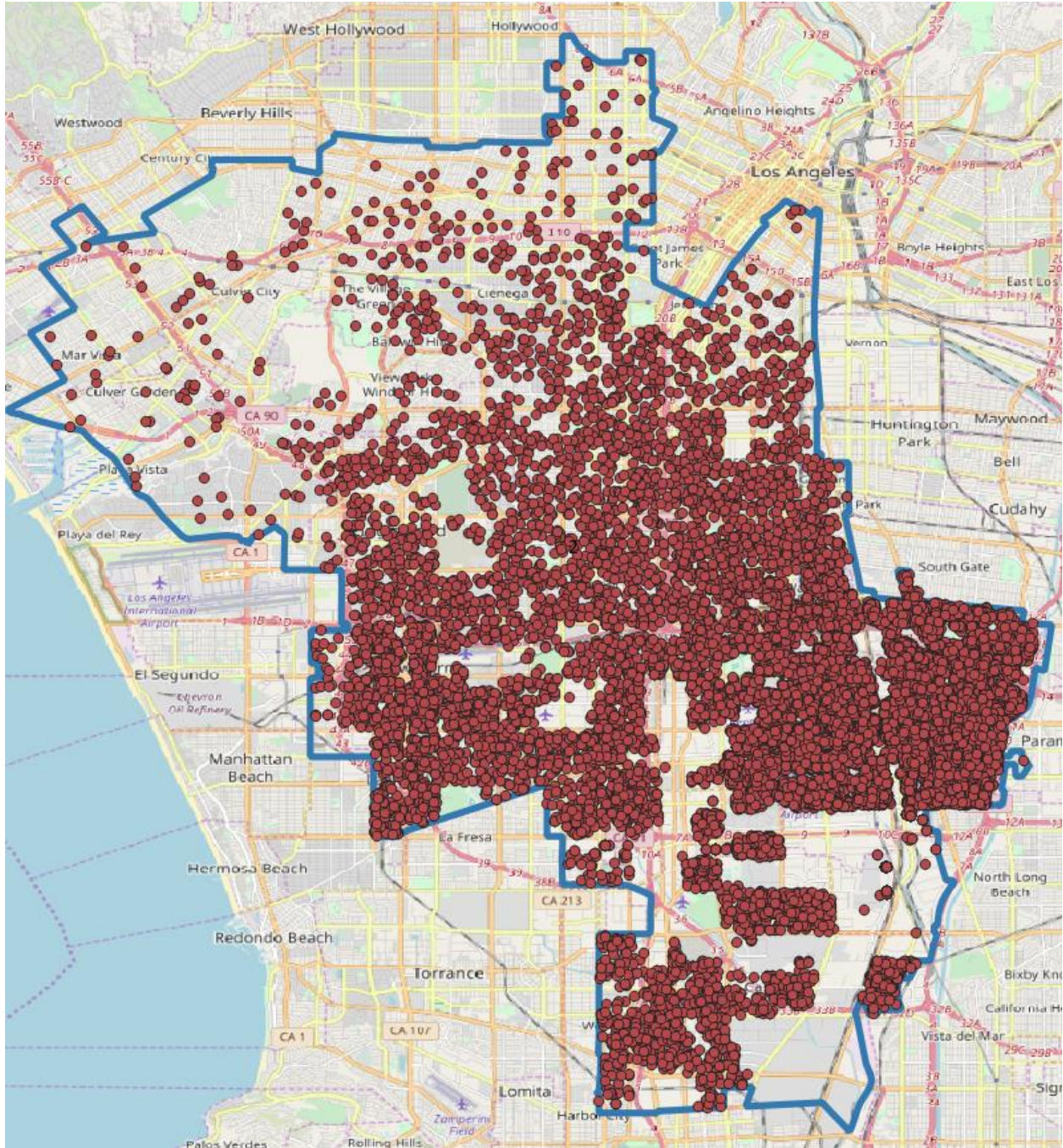


Compton College 2nd Los Angeles County Supervisorial District Report Card for Constituents (2014-2019)



Compton College

Report Card for Constituents (2014-2019)

Definitions and Explanations



District Map

The map displays each enrolled Compton College student within the 2nd Los Angeles County Supervisorial District.

Enrollment Data

Number of Students – The number of students is the distinct count of students within a term who enroll in a course. Students may be represented multiple times across terms.

Placement – Taking transfer-level math and English is essential for college students. The table shows the number of students who enrolled in transfer-level math and English courses. Percentages reflect the number of students who enroll in transfer-level math and English over the total number of students who enroll in math and English courses in Fall 2018.

Demographics – The percentage of students from the district with given demographic characteristics, compared to the overall percentage of Compton College students with given demographic characteristics. All demographic data reflects students from the 2018-2019 academic year.

Enrollment Level – The number of units of coursework a student enrolled in per semester. Students enrolling in 12 or more units are considered full-time. Students enrolling in less than 12 units are considered part-time.

Persistence Rate – The percentage of students who enroll in consecutive terms. Persistence from fall 2018 to spring 2019 means students enrolled in coursework for both semesters.

Achievement Data

Success Rate – The percentage of enrollments that produce a passing grade (A, B, C, or Pass) for a course over all enrollments.

Retention Rate – The percentage of students who remain enrolled in their courses without withdrawing, regardless of the grade they receive.

Majors – Ranking of majors is based on the number of Compton College students from the district who have declared these majors as their area of study.

Median Earning Changes – The change in earnings between the second quarter prior to the academic year of entry and the second quarter after the academic year of exit among all students who exited Compton College (and who did not transfer to any other postsecondary institution).

Working in Field of Study- The proportion of CTE outcomes survey respondents who say they are working in a job very closely or closely related to their field of study (2014-2015).

Attained the Living Wage- Among all students who exited the community college system and who did not transfer to any postsecondary institution, the proportion who attained the district county living wage for a single adult measured immediately following the academic year of exit.

Career Education Outcomes – This information reflects employment data obtained from EMSI for the Compton College service area. Annual openings refer to the average number of positions available for the given occupation. Growth indicates the projected 10-year increase in the number of positions for the given occupation. The Location Quotient quantifies how much a given occupation is concentrated in the service area compared to the nation. A higher location quotient (above 1.00) reflects occupations that are more concentrated in the Compton College service area.

Compton College

2nd Los Angeles County Supervisorial District

Report Card for Constituents (2014-2019)



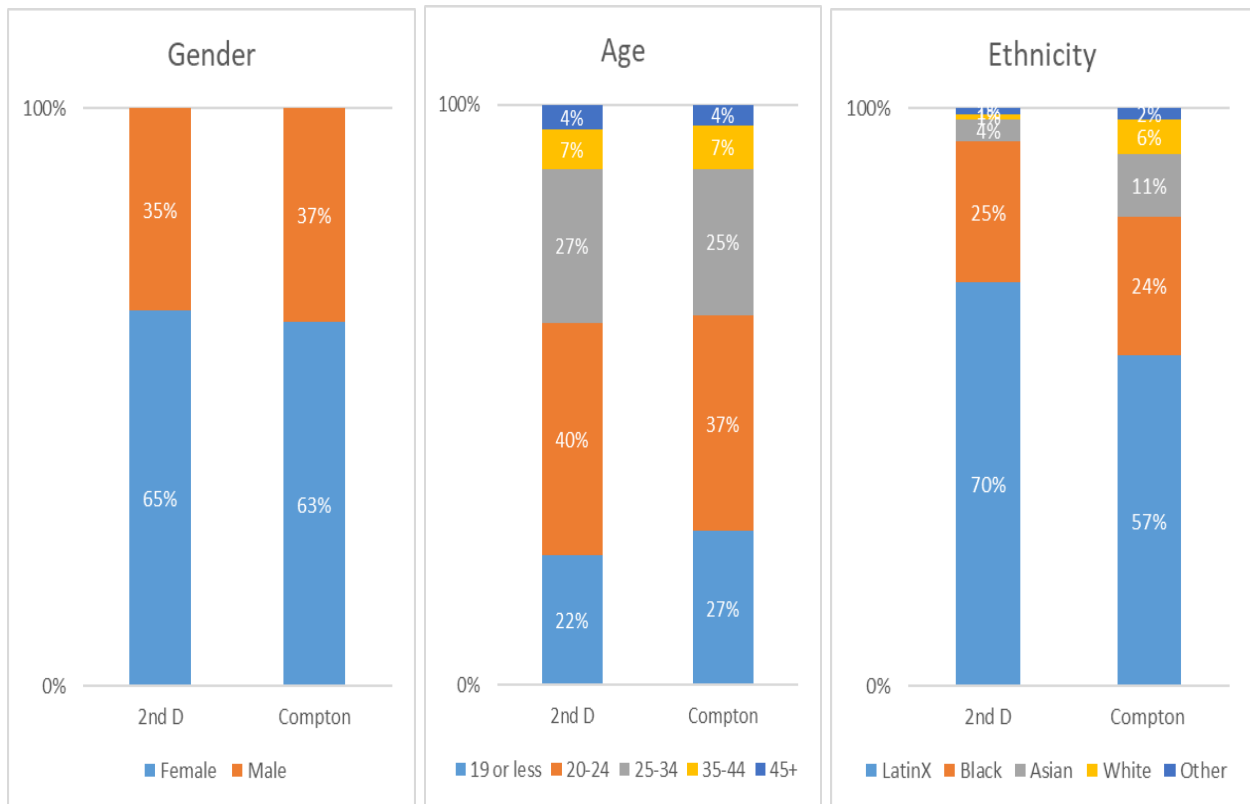
Total Number of Students

	2014-2015	2015-2016	2016-2017	2017-2018	2018-2019
# Students	9448	9547	10999	10702	10135

Course Enrollments in Gateway Courses (Fall 2018)

Level	2 nd Los Angeles County District		Compton College	
	Math	English	Math	English
Transfer Level	32%	49%	32%	51%
Below Transfer	68%	51%	68%	49%

2018-2019 Enrollment Demographics



Enrollments Level (2018-2019)

Full/Part	2 nd District		Compton College
	#	%	
Full-time (12+)	1378	14%	13%
Part-time (<12)	8757	86%	87%

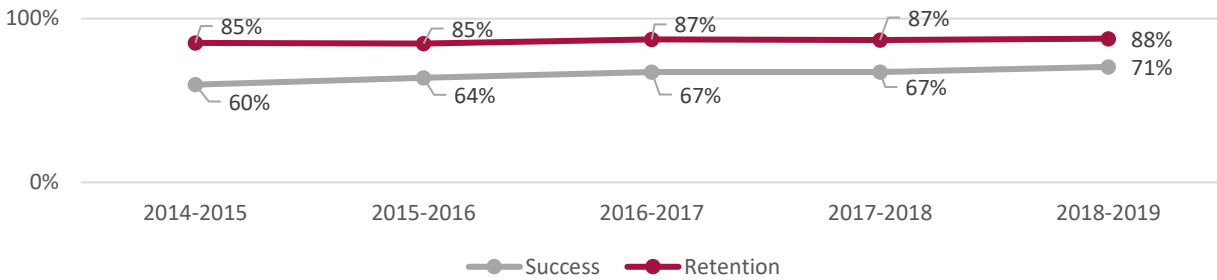
* Includes separate Fall and Spring records for students enrolled in 2018-2019 school year.

Persistence Rate (2018-2019)

Term	2 nd District		Compton College
	#	%	
Fall 2018-Spring 2019	2483	59%	53%

*Based on student enrolled in Fall 2018.

Academic Success and Retention Rates



Degrees and Certificates Awarded

Program Award	2013-2014	2014-2015	2015-2016	2016-2017	2017-2018
Degrees/Certificates	190	208	327	381	372

Top 10 Majors for the 2nd District

1. Nursing
2. Childhood Educ.
3. Gen Stu-Social & Behav. Sci.
4. Business Administration
5. Pre-Nursing
6. Biology
7. Business Mgmt.
8. Psychology
9. Kinesiology
10. General Science

Median Earnings Changes (All Students)

- Compton College students experience a 45% median increase in earnings when they leave the college (2016-2017).
- 70% of former Compton College students reported working in their field of study (2015-2016).
- 34% of former Compton College students attained a living wage (2016-2017).

Career Education Outcomes for the Compton College Service Area

Positions	Growth	Earnings
112,068	6.5%	\$27.49/hr
Jobs in Area (2017)	% Change (2017-2027)	Median Hourly Earnings
2% above National Average	Nation: 11.0%	Nation: \$24.62/hr

Occupation	Annual Openings	Median Hourly Earnings	Growth (2017 - 2027)	Location Quotient (2017)
Registered Nurses	921	\$45.61/hr	21.72%	1.05
General and Operations Managers	819	\$50.36/hr	4.75%	1.03
Administrative Assistants	1,010	\$18.95/hr	-1.29%	0.86
Managers, All Other	781	\$19.91/hr	13.35%	1.17
Childcare Workers	866	\$8.88/hr	-6.80%	1.06
Accountants and Auditors	522	\$33.78/hr	4.55%	0.85
Police and Sheriff's Patrol Officers	355	\$49.83/hr	9.60%	1.70
Automotive Technicians & Mechanics	393	\$15.04/hr	1.31%	1.27
Management Analysts	409	\$36.81/hr	11.28%	0.82
Hairstylists and Cosmetologists	468	\$12.23/hr	24.03%	0.68
Social and Human Service Assistants	400	\$21.66/hr	20.50%	1.75