



STUDENT PROFILE

El Camino College

Fall 2007

Office of Institutional Research

May 21, 2008

(Source data: Chancellor's Office, El Camino College)

Demographic and Enrollment Characteristics Summary Fall 2007

The Student Profile features a selection of demographic and enrollment characteristics of the Fall 2007 student body. A quick summary of many of the characteristics featured in this report is provided below; additional course enrollment variables also are provided.

Pages 3 through 14 provide more detailed information and analysis by topic. A three-year study of these common variables is available in a separate report.

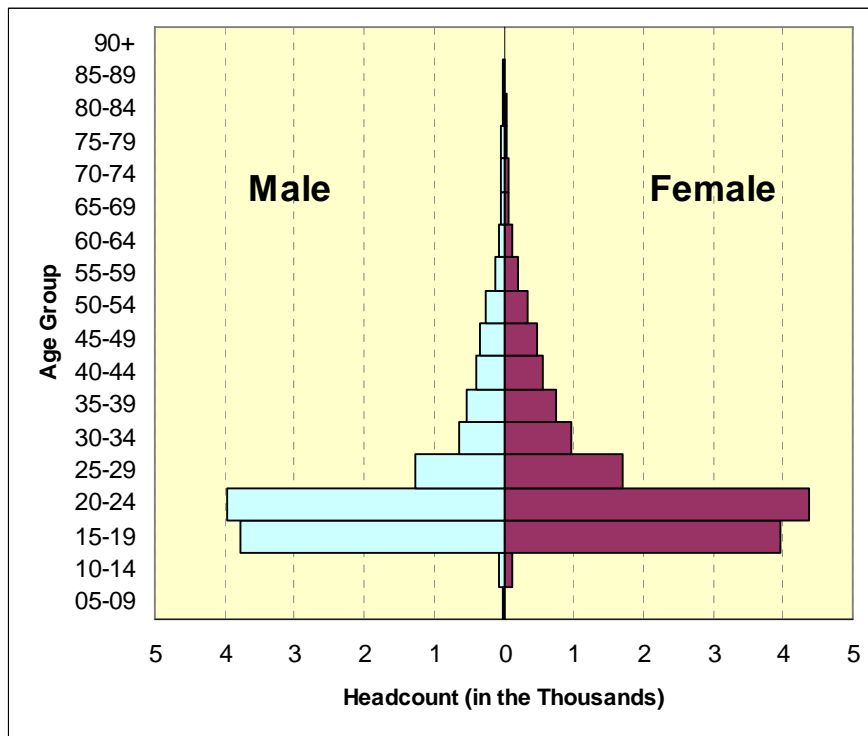
Category	Characteristic	Fall 2007	
		n	%
<i>All Students</i>		25,422	100.0
Gender	Female	13,797	54.3
	Male	11,617	45.7
Age	Under Age 17	770	3.0
	17	813	3.2
	18	2,989	11.8
	19	3,379	13.3
	20	2,676	10.5
	21	1,939	7.6
	22	1,524	6.0
	23	1,200	4.7
	24	986	3.9
	25-29	2,975	11.7
	30-39	2,904	11.4
	40-49	1,797	7.1
	50-64	1,105	4.3
	65+	358	1.4
Ethnicity	African-American	4,572	18.0
	Amer Ind/Alaskan	122	0.5
	Asian	3,406	13.4
	Filipino	1,036	4.1
	Latino	8,200	32.3
	Pacific Islander	247	1.0
	White	5,211	20.5
	Other	492	1.9
	Unknown or Declined	2,136	8.4
Residency	California Resident	23,910	94.1
	Out of State	708	2.8
	International	799	3.1

Category	Characteristic	Fall 2007	
		n	%
<i>All Students</i>		25,422	100.0
Education Level	Not HS Grad	1,787	7.0
	HS Grad or Equiv.	19,564	77.0
	AA/AS Degree	1,108	4.4
	Bachelor's or Higher	1,884	7.4
Class Times	Daytime Student	12,163	47.8
	Evening Student	5,551	21.8
	Comb Day/Eve Student	5,186	20.4
Educational Goal	Intend to Transfer	8,759	34.5
	Degree/Certif. Only	1,105	4.3
	Retrain/recertif.	1,875	7.4
	Basic Skills/GED	997	3.9
	Enrichment	1,233	4.9
	Undecided	6,756	26.6
Credit Status	Credit	25,241	99.3
	Non-Credit	181	0.7
Enrollment Level	Full-time	7,262	28.6
	Part-time	17,153	67.5
	Non-Credit	181	0.7
	Not enrolled or N/A	826	3.2
Unit Load <i>(At Census)</i>	Fewer than 6 units	8,582	33.8
	6 to 8.5 units	4,793	18.9
	9 to 11.5 units	3,778	14.9
	12 to 14.5 units	5,653	22.2
	15 units or more	1,609	6.3
Term Units	Credit Students	25,241	99.3
	Total Units	202,528	
	Average Units/Student	8.0	
Cumulative Units	15 units or fewer	13,594	53.5
	15.5 to 30 units	4,136	16.3
	30.5 to 60 units	5,098	20.1
	Over 60 units	2,594	10.2
Instruction Method <i>(dup. headcount)</i>	Lecture	65,594	70.8
	Laboratory	24,089	26.0
	Distance Education	2,880	3.1
	Work Experience	16	0.0
	Independent Study	25	0.0
Accounting Method <i>(dup. headcount)</i>	Weekly Census	59,425	89.9
	Daily Census	3,893	5.9
	Positive Attendance	2,725	4.1
	Ind. Study/Work Exper.	25	0.0

Age by Gender

The age distribution of El Camino College students truly reflects lifelong learning for the college with representation from children through senior citizens and an average student age of 26. However, over half of enrolled students are 18 to 20, with a median age of 22 and a mode of 19.

Overall, about 19% more women than men attend ECC. The largest differences were found among working adults with smaller differences among the high school and young adult populations.



Age	Male	Female	Total
05-14	72	112	184
15-19	3,774	3,960	7,734
20-24	3,959	4,366	8,325
25-29	1,275	1,699	2,974
30-34	651	976	1,627
35-39	520	756	1,276
40-44	402	560	962
45-49	350	484	834
50-54	255	334	589
55-59	132	201	333
60-64	65	116	181
65-69	46	60	106
70-74	39	55	94
75-79	42	39	81
80+	24	52	76
Total *	11,606	13,770	25,376

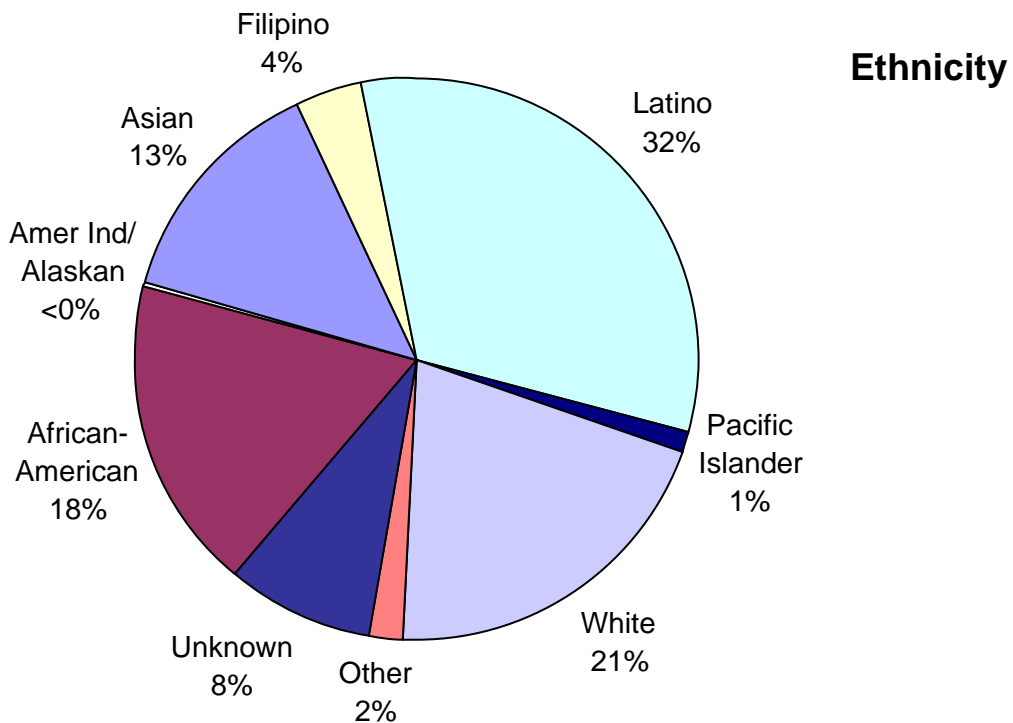
18 to 23 Year Olds

Age	Male	Female	Total
18	1,471	1,517	2,988
19	1,701	1,678	3,379
20	1,287	1,389	2,676
21	946	993	1,939
22	701	823	1,524
23	557	643	1,200
Total	6,663	7,043	13,706

* Total does not add up to fall enrollment total due to invalid entries for age and gender.

Ethnicity

El Camino College (ECC) is a broadly diverse campus serving a large percentage of African-American, Latino, Asian and White students, reflecting the diversity of the district. The college is considered a Hispanic-serving Institution, with Latinos representing the largest ethnic group on campus. The campus also serves a significant Filipino population.



Group	Count
African-American	4,572
American Indian *	122
Asian	3,406
Filipino	1,036
Latino	8,200
Pacific Islander	247
White	5,211
Other	492
Unknown	2,136
Total	25,422

* Includes Alaskan Natives

Age by Ethnicity

The table below presents point measures of age for each ethnic group¹. The mean age tends to be considerably higher than the median due to significant numbers of older-aged students. The mode ranges between 18 and 20, depending on the group.

In general, the Asian, African-American, White or American Indian/Alaskan Native student tends to be older, while the Filipino, Latino and Pacific Islander student is relatively younger than the ECC student population as a whole.

Age by Ethnicity Descriptive Statistics

Group	Count	Mean	Median	Mode
African-American	4,572	26.5	22	19
Amer Ind/Alaskan	122	27.8	22	18
Asian	3,406	26.4	22	19
Filipino	1,036	24.4	21	19
Latino	8,200	24.0	21	19
Pacific Islander	247	22.8	20	18
White	5,211	30.0	23	19
Other/Unknown	2,628	26.6	21	19
Total	25,422	26.3	22	19

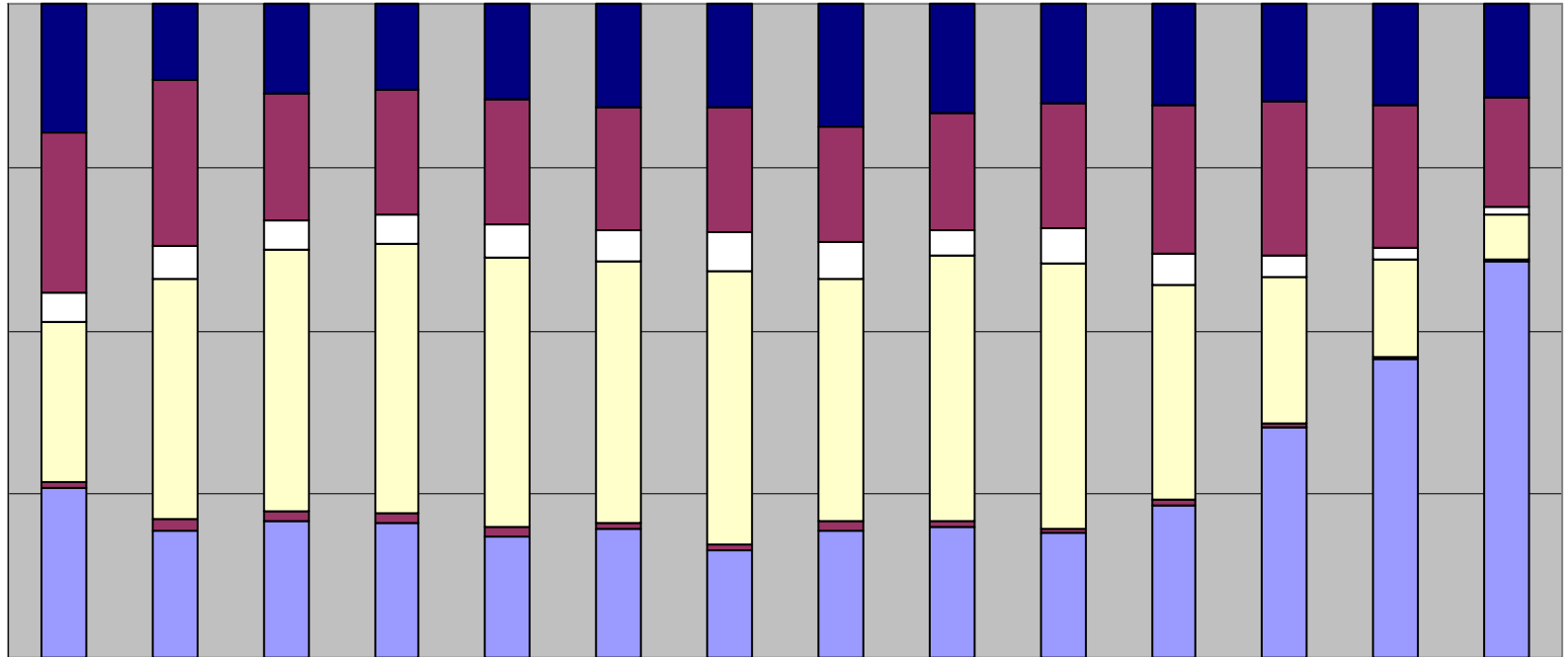
Age Distribution by Ethnicity (following page)

As suggested above, most ethnic groups at El Camino College represent varying percentages of the student body relative to age or age group. White students are more common in very young and older age groups, while Latino students are more likely to be found in the traditional college ages and in the 20's and 30's. Less-pronounced variability is found among other ethnic groups.

The chart on the following page represents the *percentage* of students from each ethnicity within each age or age group. Smaller groups (American Indian/Alaskan Native) and unidentifiable groups (decline to state and unknown) were excluded from the chart but are found in the statistics table above.

¹ Definitions of descriptive statistics used to measure age: **mean** age is the average age, or the single age that best describes the ECC student body; **median** age is the age at which 50% of the ECC population lies above and below; and **mode** age is the single most common age.

Age Distribution by Ethnicity



	<17	17	18	19	20	21	22	23	24	25-29	30-39	40-49	50-64	65+
■ Asian	16%	10%	12%	11%	13%	14%	14%	17%	15%	14%	14%	13%	14%	12%
■ Black	20%	23%	17%	17%	17%	17%	17%	16%	16%	17%	21%	21%	19%	14%
□ Filipino	4%	4%	4%	4%	5%	4%	5%	5%	3%	5%	4%	3%	2%	1%
■ Latino	20%	32%	36%	36%	37%	36%	38%	34%	36%	37%	30%	20%	13%	6%
■ Pac Islander	1%	1%	2%	1%	1%	1%	1%	1%	1%	1%	1%	1%	0%	0%
■ White	21%	17%	19%	18%	17%	17%	15%	17%	18%	17%	21%	32%	40%	50%

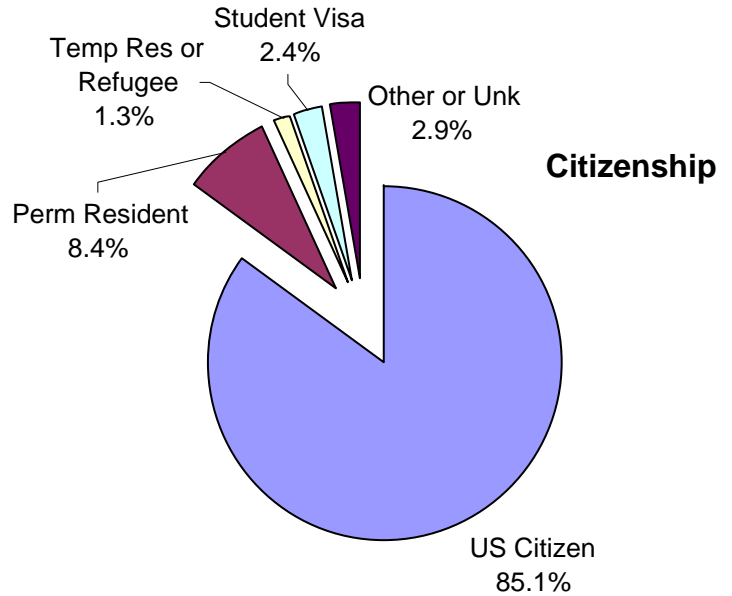
■ White ■ Pac Islander ■ Latino □ Filipino ■ Black ■ Asian

This chart shows the percentage of each age group represented by the major ethnic groups at El Camino College. For example, 19 year-olds are 11% Asian, 17% African-American, 36% Latino and 18% White, compared with 30 to 39 year-olds who are 14% Asian, 21% African-American, 30% Latino and 21% White.

Citizenship and Residency Status

The vast majority of students at El Camino College are U.S. citizens but a significant portion of the population (nearly 3%) is international students coming from over 60 countries. Over 90% of all students are officially California residents.

Over half of ECC students come from outside the district, with nearly one-third coming from the Los Angeles Community College District.



Residency

Description	Count	%
El Camino CCD	11,049	45.2%
Los Angeles CCD	6,351	26.0%
Compton CCD	579	2.4%
Long Beach CCD	323	1.3%
Other Cal. CC Districts	559	2.3%
Other California Resident	3,665	15.0%
California Total	22,526	92.2%
US Res, Outside California	708	2.9%
AB540 Student Residency	384	1.6%
Out of State Total	1,092	4.5%
Outside United States	799	3.3%
International Total	799	3.3%
Unknown Residency	5	0.0%
Total	24,422	

Disability Status

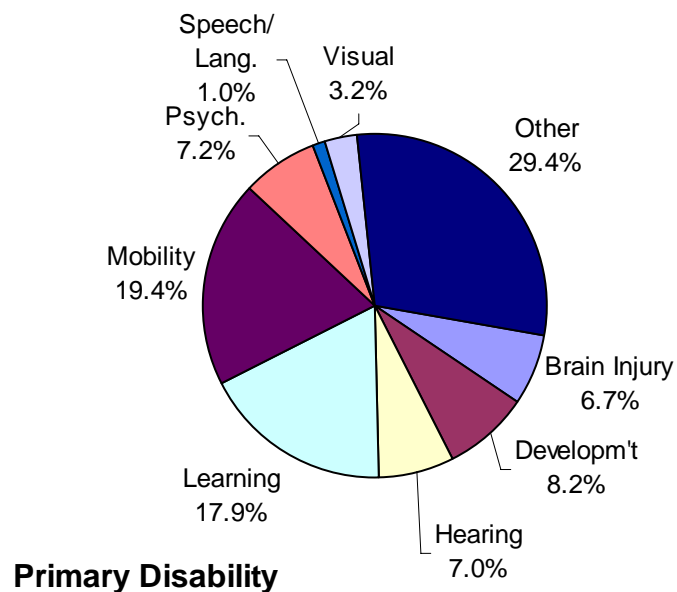
About 4% of El Camino College students have a registered disability, with an equal percentage of females and males registered. The most common disability is mobility impairment, representing 19% of disabilities registered, followed by learning disability at 18%.

Disability Status by Gender

Status	Female		Male		Total	
	n	%	n	%	n	%
Registered Disability	521	3.8	436	3.8	957	3.8
No Disability Registered	13,249	96.2	11,170	96.2	24,419	96.2
Total	13,770		11,606		25,376	

Primary Disability by Gender

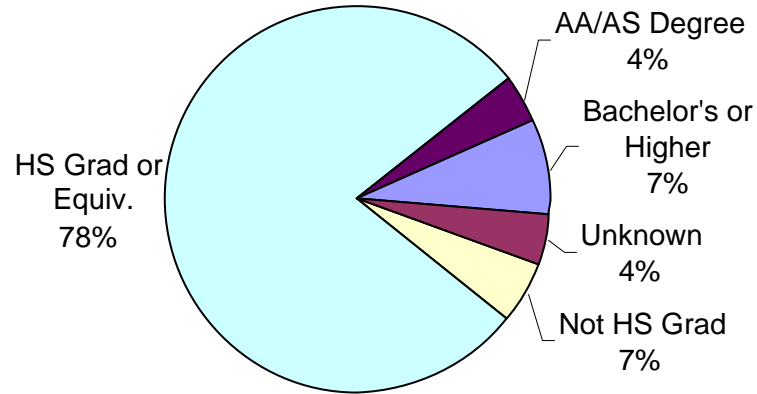
Primary Disability	Female		Male		Total	
	n	%	n	%	n	%
Acquired Brain Injury	34	6.5	30	6.9	64	6.7
Developmentally Delayed Learner	41	7.9	37	8.5	78	8.2
Hearing Impaired	41	7.9	26	6.0	67	7.0
Learning Disability	108	20.7	63	14.4	171	17.9
Mobility Impaired	105	20.2	81	18.6	186	19.4
Psychological Disability	36	6.9	33	7.6	69	7.2
Speech/Language Impaired	7	1.3	3	0.7	10	1.0
Visually Impaired	20	3.8	11	2.5	31	3.2
Other Disability	129	24.8	152	34.9	281	29.4
Total	521		436		957	



Education Level

About 90% of ECC students have at least a high school diploma or equivalent. 11% of students have an Associate's degree or higher. And about 7% of students are not high school graduates; well over half of these are still in high school.

Education Level



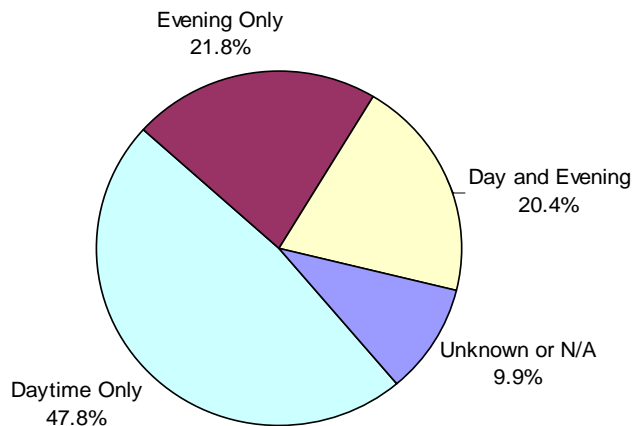
Education Level	Count
Not HS Grad	1,787
HS Grad or Equiv.	19,564
AA/AS Degree	1,108
Bachelor's or Higher	1,884
Unknown	1,079
Total	25,422

Campus Enrollment Patterns

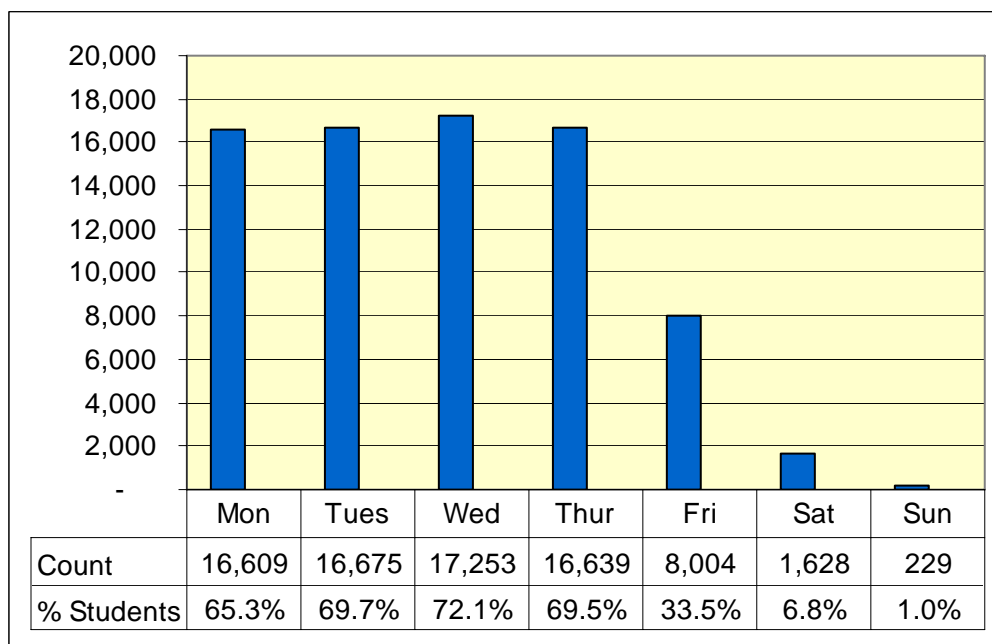
Courses at El Camino College are offered 7 days a week and during both daytime and evening hours to serve its district community. Over two thirds of students enroll in at least one daytime class, while nearly 22% are enrolled exclusively in evening classes. Less than half of ECC students are enrolled only during daytime hours. 20% enroll in a combination of day and evening courses. The “unknown” percentage includes students enrolled exclusively in distance education courses.

About 16,000 students are on campus attending classes Monday through Thursday (bottom chart), with about half that number attending on Fridays.

Day/Evening Attendance



Students on Campus by Day of the Week

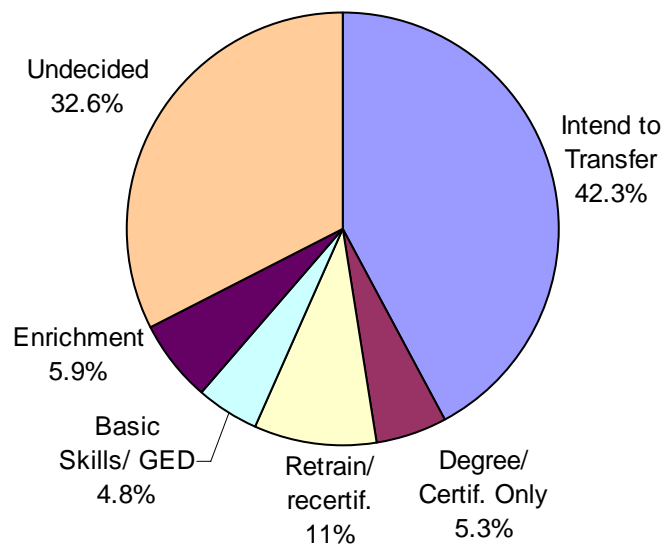


Educational Goal

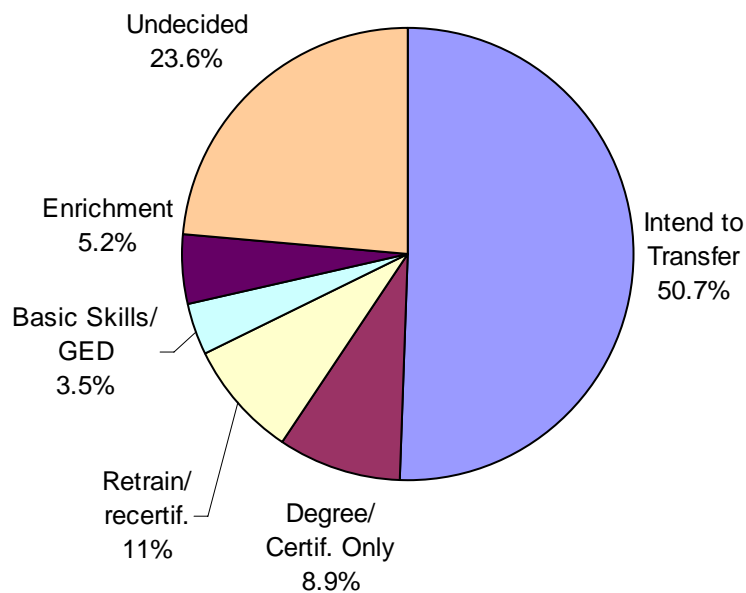
The educational goal of enrolled students is captured on the initial application and may change over the course of a student's career. The two charts below compare the goals of students upon entry and following the matriculation (testing, orientation and counseling) process. Note: not all students go through this process so some educational goals remain unchanged.

The largest percentage of students (42%) indicated an intention to transfer to a 4-year institution as their goal; this percentage grew to 51% after matriculation. The second largest category is "undecided" at 33%, which shrank by 10 points following matriculation. The percentage seeking degrees or certificates nearly doubled after the matriculation process.

Educational Goal - Upon Entry

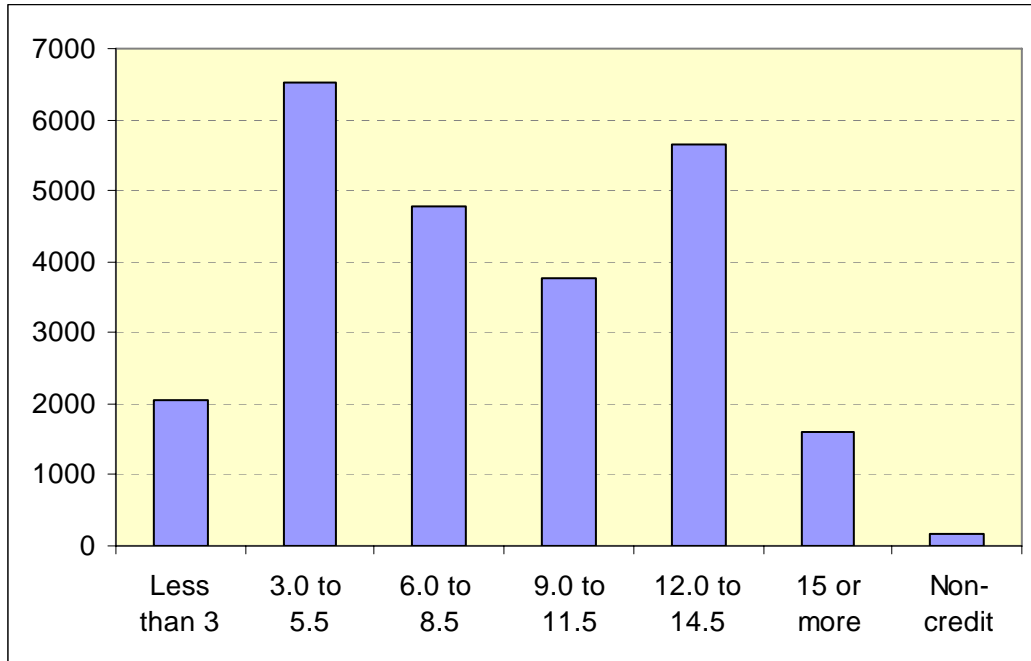


Educational Goal - After Matriculation

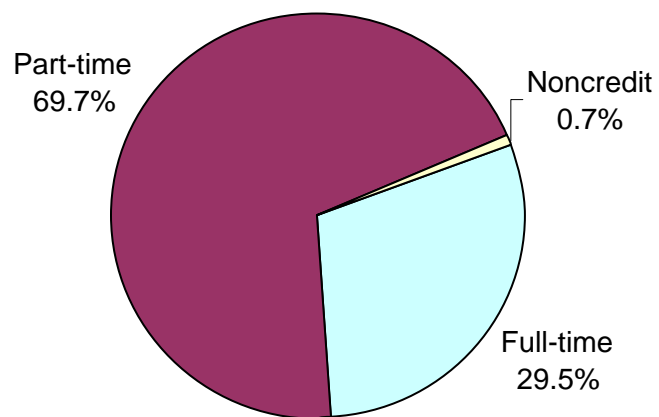


Unit Load

Over 30% of students are enrolled full-time, defined as carrying 12 units or more (see pie chart). In contrast, over one-third are enrolled in fewer than 6 units. Another third falls between these two categories.



Unit Load	Count
Less than 3	2058
3.0 to 5.5	6524
6.0 to 8.5	4793
9.0 to 11.5	3778
12.0 to 14.5	5653
15 or more	1609
Non-credit	181
Not enrolled	826
Total	25,422



Full-time/Part-time Status

Student Retention and Success

Student academic performance within a term can be measured in several ways. Most common are student *retention* (completing a course, regardless of final grade), *success* (completing a course with a C/CR or better) and Grade Point Average (*GPA*).

Success and retention along with a course grade distribution are provided in the table below. In Fall 2007, students were retained at a rate of about 77%. Nearly 63% succeeded by receiving a C/CR or better in a course. The overall term GPA is **2.63**.

Course Grade Distribution, Success and Retention Rates

Grade	Count	%	Rate
A	16,244	24.9	Success: 62.9%
B	11,674	17.9	
C	8,356	12.8	
CR (credit)	4,788	7.3	Retention: 77.3%
D	2,743	4.2	
F	5,022	7.7	
NC (no credit)	1,290	2.0	
Incomplete	359	0.5	Term GPA: 2.63
Drop	2,566	3.9	
Withdrawal	12,242	18.8	
Non-Credit	184		
Total	65,468	100.0	

Success and Retention Rates

