



STUDENT PROFILE

El Camino College

Fall 2006

**Office of Institutional Research
Irene Graff, Mike Wilson**

April 16, 2007

(Source data: Chancellor's Office, El Camino College)

Demographic and Enrollment Characteristics Summary Fall 2006

The Student Profile features a selection of demographic and enrollment characteristics of the fall 2006 student body. A quick summary of many of the characteristics featured in this report is provided below; additional course enrollment variables also are provided.

Pages 3 through 14 provide more detailed information and analysis by topic. A three-year study of these common variables is available in a separate report.

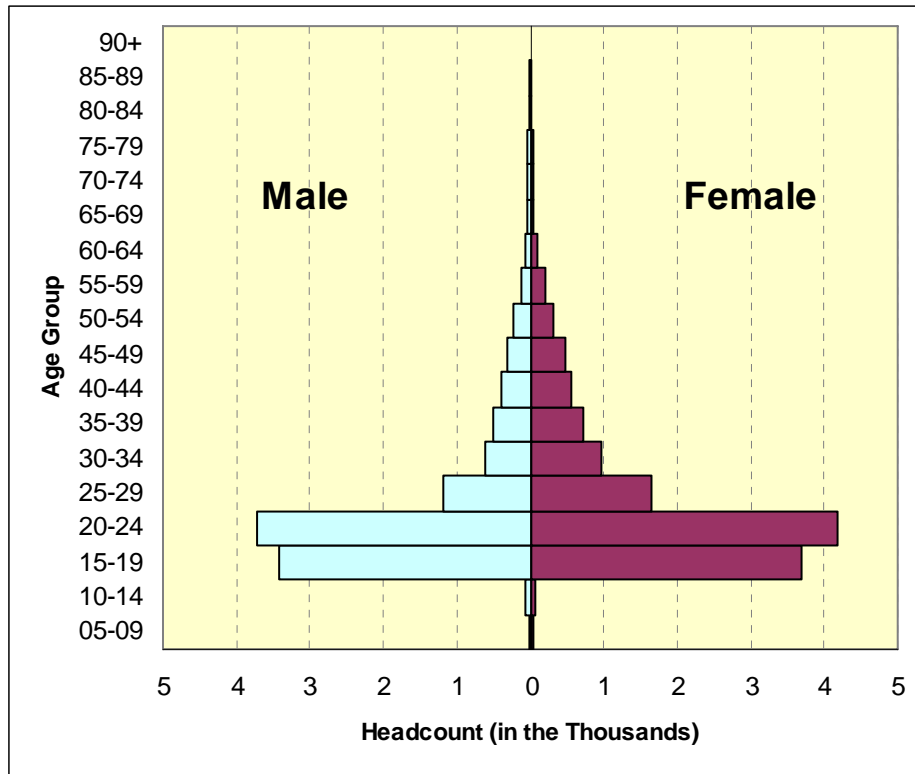
Category	Characteristic	Fall 2006	
		n	%
<i>All Students</i>		23,928	100.0
Gender	Female	13,106	54.8
	Male	10,805	45.2
Age	Under Age 17	478	2.0
	17	703	2.9
	18	3,011	12.6
	19	3,085	12.9
	20	2,502	10.5
	21	1,969	8.2
	22	1,377	5.8
	23	1,097	4.6
	24	979	4.1
	25-29	2,847	11.9
	30-39	2,805	11.7
	40-49	1,740	7.3
	50-64	1,054	4.4
	65+	278	1.2
Ethnicity	African-American	4,355	18.2
	Amer Ind/Alaskan	101	0.4
	Asian	3,265	13.6
	Filipino	906	3.8
	Latino	7,557	31.6
	Pacific Islander	231	1.0
	White	5,043	21.1
	Other	454	1.9
	Unknown or Declined	2,016	8.4
Residency	California Resident	22,454	93.8
	Out of State	667	2.8
	International	779	3.3
Enrollment Status	First-time Student	3,137	13.1
	First-time Transfer	1,649	6.9
	Returning	4,995	20.9
	Continuing	13,349	55.8
	K-12 Special Admit	722	3.0

Category	Characteristic	Fall 2006	
		n	%
<i>All Students</i>		23,928	100.0
Education Level	Not HS Grad	1,252	5.2
	HS Grad or Equiv.	18,805	78.6
	AA/AS Degree	1,022	4.3
	Bachelor's or Higher	1,829	7.6
Class Times	Daytime Student	11,272	47.1
	Evening Student	5,445	22.8
	Comb Day/Eve Student	5,227	21.8
Educational Goal	Intend to Transfer	8,552	35.7
	Degree/Certif. Only	1,093	4.6
	Retrain/recertif.	2,035	8.5
	Basic Skills/GED	842	3.5
	Enrichment	1,040	4.3
	Undecided	6,856	28.7
Credit Status	Credit	23,109	96.6
	Non-Credit	30	0.1
Enrollment Level	Full-time	6,856	28.7
	Part-time	16,253	67.9
	Non-Credit	30	0.1
	Not enrolled or N/A	789	3.3
Unit Load <i>(At Census)</i>	Fewer than 6 units	7,975	33.3
	6 to 8.5 units	4,521	18.9
	9 to 11.5 units	3,757	15.7
	12 to 14.5 units	5,213	21.8
	15 units or more	1,643	6.9
Term Units	Credit Students	23,109	96.6
	Total Units	186,470	
	Average Units/Student	8.1	
Cumulative Units	15 units or fewer	11,828	49.4
	15.5 to 30 units	4,274	17.9
	30.5 to 60 units	5,260	22.0
	Over 60 units	2,566	10.7
Instruction Method <i>(dup. headcount)</i>	Lecture	64,721	71.7
	Laboratory	23,295	25.8
	Distance Education	2,161	2.4
	Work Experience	54	0.1
	Independent Study	3	0.0
	Accounting Method <i>(dup. headcount)</i>	Weekly Census	56,573
Daily Census		4,700	7.3
Positive Attendance		3,099	4.8
Ind. Study/Work Exper.		3	0.0

Age by Gender

The age distribution of El Camino College students truly reflects lifelong learning for the college with representation from children through senior citizens and an average student age of 26. However, over half of enrolled students are 18 to 23, with a median age of 22 and a mode of 19.

Overall, 21% more women than men attend ECC. The largest differences were found among working adults with smaller differences among the high school and young adult populations.



Age	Male	Female	Total
05-14	56	71	127
15-19	3427	3,684	7,111
20-24	3731	4,188	7,919
25-29	1197	1,647	2,844
30-34	617	957	1,574
35-39	517	712	1,229
40-44	387	568	955
45-49	307	478	785
50-54	241	314	555
55-59	134	217	351
60-64	59	87	146
65-69	45	48	93
70-74	37	37	74
75-79	28	29	57
80+	15	38	53
Total *	10,805	13,106	23,911

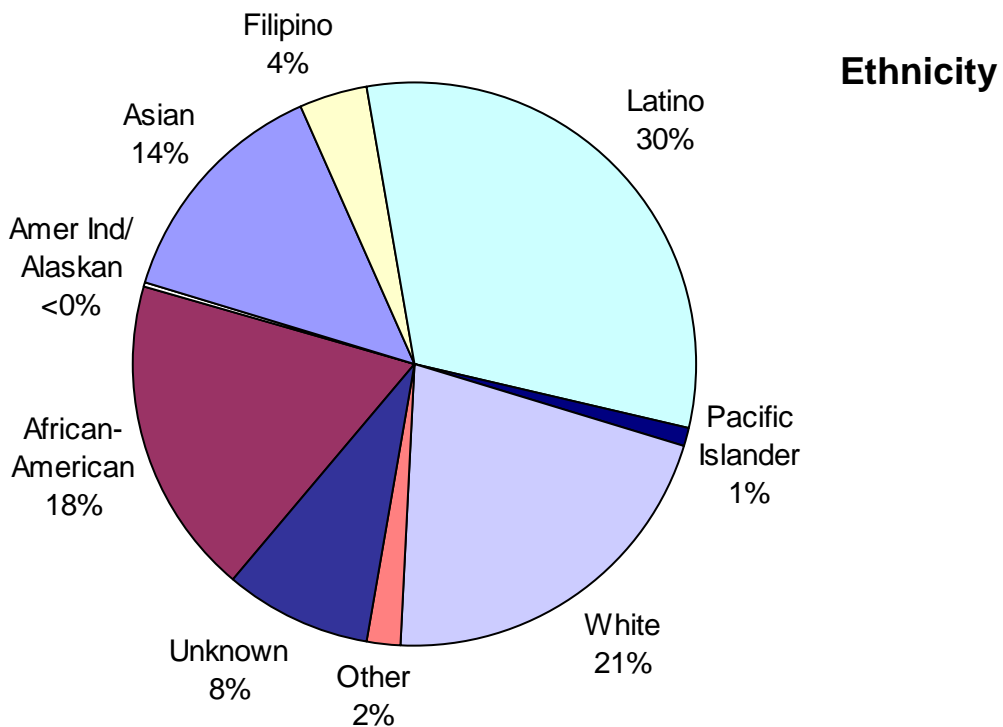
18 to 23 Year Olds

Age	Male	Female	Total
18	1,486	1,525	3,011
19	1,523	1,561	3,084
20	1,209	1,293	2,502
21	934	1,035	1,969
22	651	725	1,376
23	525	570	1,095
Total	6,328	6,709	13,037

* Total does not add up to fall enrollment total due to invalid entries for age and gender.

Ethnicity

El Camino College (ECC) is a broadly diverse campus serving a large percentage of African-American, Latino, Asian and White students, reflecting the diversity of the district. The college is considered a Hispanic-serving Institution, with Latinos representing the largest ethnic group on campus. The campus also serves a significant Filipino population.



Group	Count
African-American	4,355
American Indian *	101
Asian	3,265
Filipino	906
Latino	7,557
Pacific Islander	231
White	5,043
Other	454
Unknown	2,016
Total	23,928

* Includes Alaskan Natives

Age by Ethnicity

The table below presents point measures of age for each ethnic group¹. The mean age tends to be considerably higher than the median due to significant numbers of older-aged students. The mode ranges between 18 and 20, depending on the group.

In general, the Asian, African-American, White or American Indian/Alaskan Native student tends to be older, while the Filipino, Latino and Pacific Islander student is relatively younger than the ECC student population as a whole.

Age by Ethnicity Descriptive Statistics

Group	Count	Mean	Median	Mode
African-American	4,355	26.9	22	19
Amer Ind/Alaskan	101	28.7	21	18
Asian	3,265	26.6	22	19
Filipino	906	24.2	21	19
Latino	7,557	23.9	21	19
Pacific Islander	231	23.5	20	18
White	5,043	29.8	23	18
Other/Unknown	2,470	26.1	21	19
Total	23,928	26.3	22	19

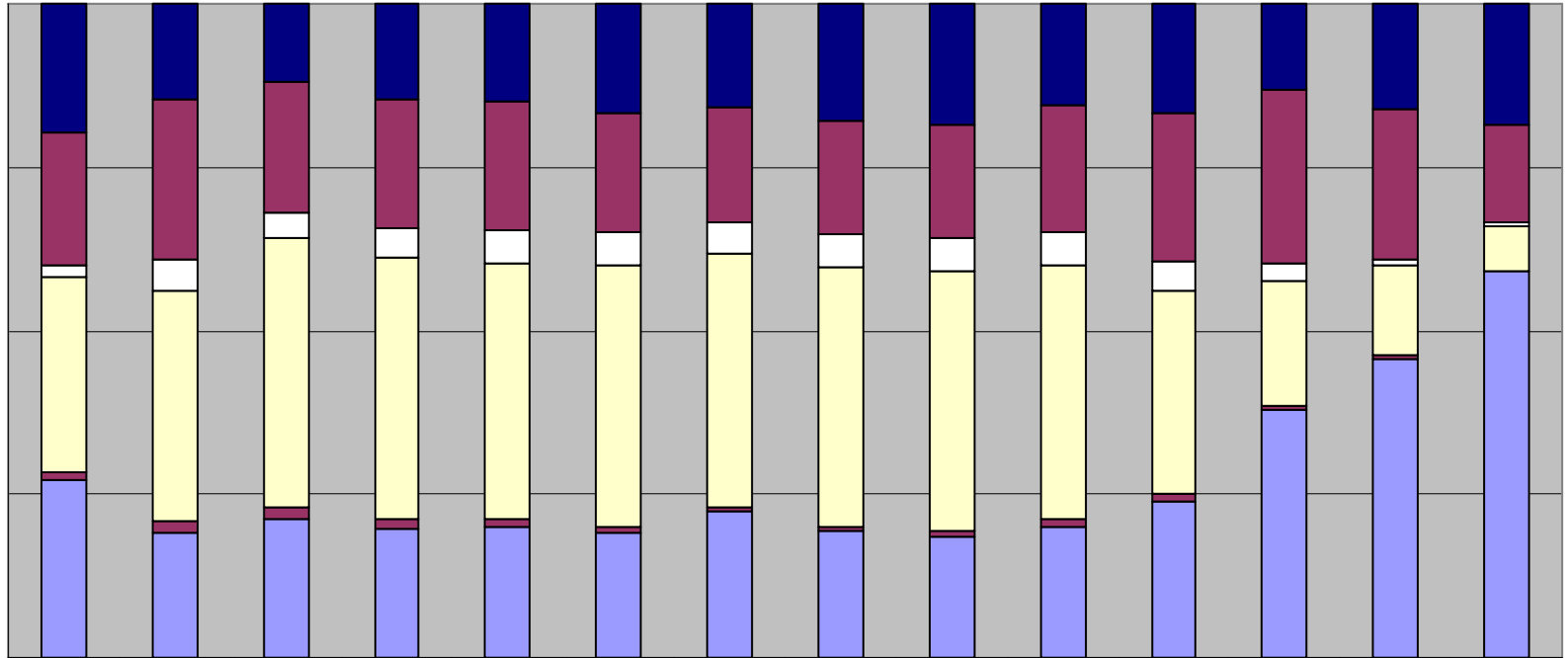
Age Distribution by Ethnicity (following page)

As suggested above, most ethnic groups at El Camino College represent varying percentages of the student body relative to age or age group. White students are more common in very young and older age groups, while Latino students are more likely to be found in the traditional college ages and in the 20's and 30's. Less-pronounced variability is found among other ethnic groups.

The chart on the following page represents the *percentage* of students from each ethnicity within each age or age group. Smaller groups (American Indian/Alaskan Native) and unidentifiable groups (decline to state and unknown) were excluded from the chart but are found in the statistics table above.

¹ Definitions of descriptive statistics used to measure age: **mean** age is the average age, or the single age that best describes the ECC student body; **median** age is the age at which 50% of the ECC population lies above and below; and **mode** age is the single most common age.

Age Distribution by Ethnicity



	<17	17	18	19	20	21	22	23	24	25-29	30-39	40-49	50-64	65+
■ Asian	16%	13%	10%	13%	13%	15%	14%	16%	16%	14%	15%	12%	14%	16%
■ Black	17%	22%	18%	18%	18%	16%	16%	15%	15%	18%	21%	24%	20%	13%
□ Filipino	1%	4%	4%	4%	4%	5%	4%	4%	4%	5%	4%	2%	1%	0%
■ Latino	25%	31%	36%	35%	35%	36%	35%	36%	35%	35%	29%	17%	12%	6%
■ Pac Islander	1%	2%	2%	1%	1%	1%	1%	0%	1%	1%	1%	1%	0%	0%
■ White	23%	17%	19%	17%	18%	17%	20%	17%	16%	18%	22%	34%	40%	51%

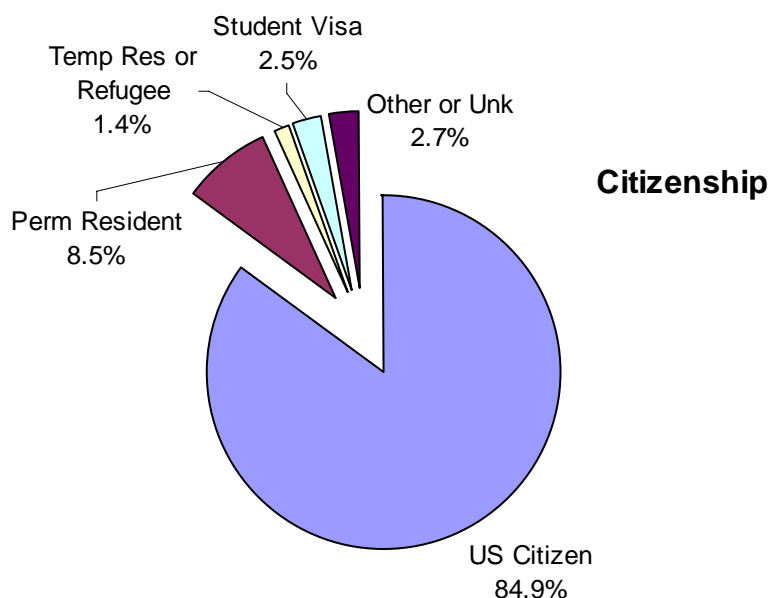
■ White ■ Pac Islander ■ Latino □ Filipino ■ Black ■ Asian

This chart shows the percentage of each age group represented by the major ethnic groups at El Camino College. For example, 19 year-olds are 13% Asian, 18% African-American, 35% Latino and 17% White, compared with 30 to 39 year-olds who are 15% Asian, 21% African-American, 29% Latino and 22% White.

Citizenship and Residency Status

The vast majority of students at El Camino College are U.S. citizens but a significant portion of the population (nearly 3%) is international students coming from over 60 countries. The top 10 source countries are provided below. Over 90% of all students are officially California residents.

Over half of ECC students come from outside the district, with nearly one-third coming from the Los Angeles Community College District.



Residency

Description	Count	%
El Camino CCD	10,432	43.6%
Los Angeles CCD	7,530	31.5%
Compton CCD	707	3.0%
Long Beach CCD	361	1.5%
Other Cal. CC Districts	692	2.9%
Other California Resident	2,307	9.6%
California Total	22,029	92.1%
US Res, Outside California	667	2.8%
AB540 Student Residency	425	1.8%
Out of State Total	1,092	4.6%
Outside United States	779	3.3%
International Total	779	3.3%
Unknown Residency	28	0.1%
Total	23,928	

Top 10 (of 68) Countries of Origin – F1 Visa Students

Country	n
Japan	253
Korea, Rep. of (South)	131
China, Hong Kong	24
Taiwan	20
Vietnam	19
Mongolia	18
Philippines	16
Indonesia	9
Thailand	9
Nigeria	8

Source: International Student Program

Disability Status

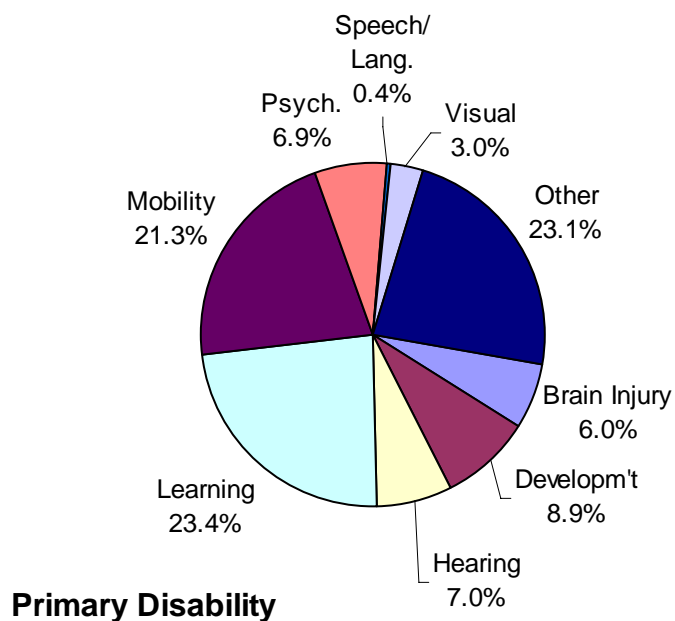
About 4% of El Camino College students have a registered disability, with a slightly larger percentage of females than males registered. The most common disability is Learning, representing 23% of disabilities registered, followed by mobility impairment at 21%.

Disability Status by Gender

Status	Female		Male		Total	
	n	%	n	%	n	%
Registered Disability	546	4.2	424	3.9	970	4.1
No Disability Registered	12,560	95.8	10,381	96.1	22,941	95.9
Total	13,106		10,805		23,911	

Primary Disability by Gender

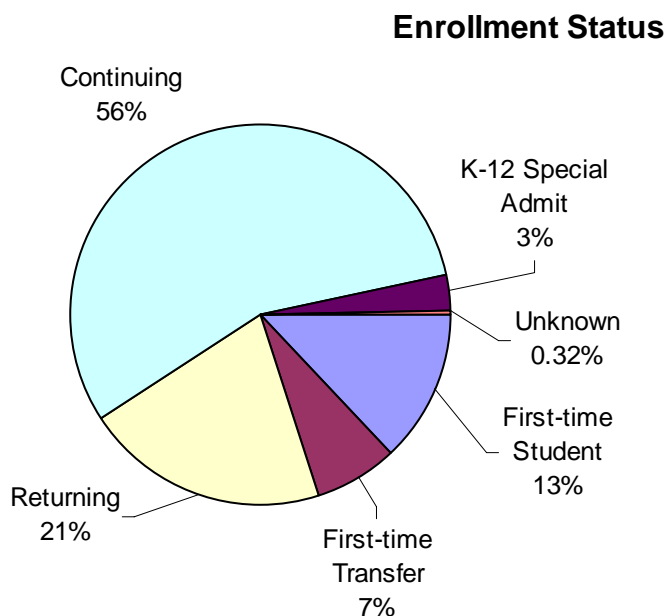
Primary Disability	Female		Male		Total	
	n	%	n	%	n	%
Acquired Brain Injury	33	6.0	25	5.9	58	6.0
Developmentally Delayed Learner	46	8.4	40	9.4	86	8.9
Hearing Impaired	44	8.1	24	5.7	68	7.0
Learning Disability	142	26.0	85	20.0	227	23.4
Mobility Impaired	114	20.9	93	21.9	207	21.3
Psychological Disability	37	6.8	30	7.1	67	6.9
Speech/Language Impaired	1	0.2	3	0.7	4	0.4
Visually Impaired	21	3.8	8	1.9	29	3.0
Other Disability	108	19.8	116	27.4	224	23.1
Total	546		424		970	



Enrollment Status and Education Level

The majority of El Camino College students are continuing students from the previous spring term. A smaller group of students (21%) are returning, indicating that they had enrolled at El Camino College in at least one term before spring 2006. About 20% of students are new to ECC, either new to any college (13%) or transferring from another (7%). Some students take classes at El Camino College while they are still in high school and have a special admissions status. These represent about 3% of the student body in fall 2006.

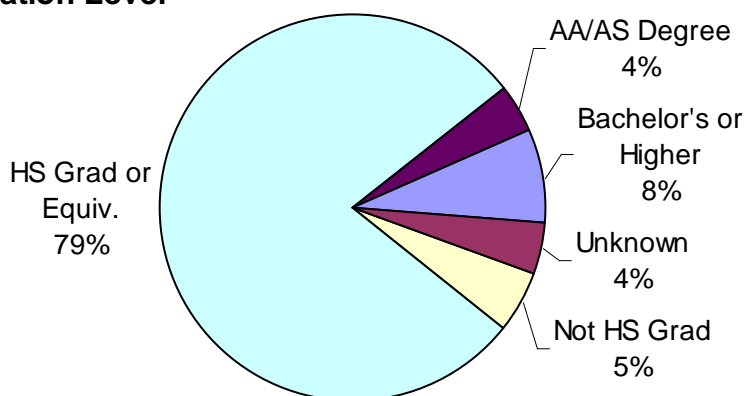
Enrollment Status	Count
First-time Student	3,137
First-time Transfer	1,649
Returning	4,995
Continuing	13,349
K-12 Special Admit	722
Unknown	76
Total	23,928



Over 90% of ECC students have at least a high school diploma or equivalent. Nearly 12% of students have an Associate's degree or higher. And about 5% of students are not high school graduates; well over half of these are still in high school.

Education Level

Education Level	Count
Not HS Grad	1,252
HS Grad or Equiv.	18,805
AA/AS Degree	1,022
Bachelor's or Higher	1,829
Unknown	1,020
Total	23,928

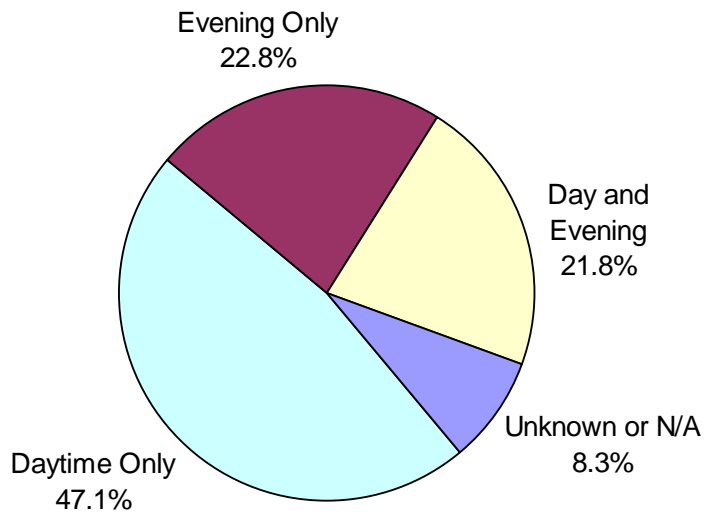


Campus Enrollment Patterns

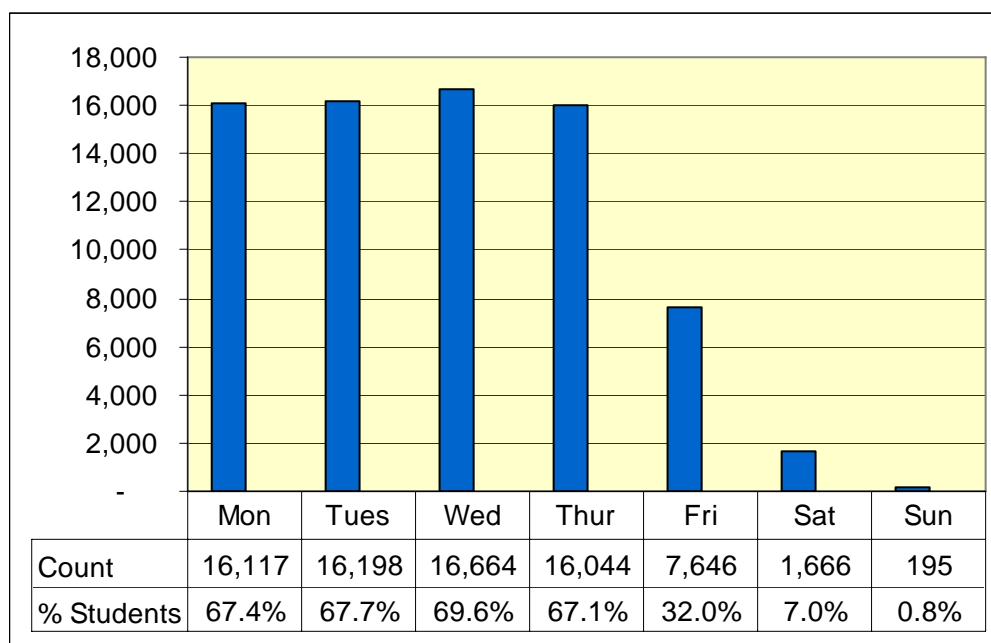
Courses at El Camino College are offered 7 days a week and during both daytime and evening hours to serve its district community. Over two thirds of students enroll in at least one daytime class, while nearly 23% are enrolled exclusively in evening classes. Less than half of ECC students are enrolled only during daytime hours. Nearly 22% enroll in a combination of day and evening courses. The “unknown” percentage includes students enrolled exclusively in distance education courses.

About 16,000 students are on campus attending classes Monday through Thursday (bottom chart), with about half that number attending on Fridays.

Day/Evening Attendance



Students on Campus by Day of the Week

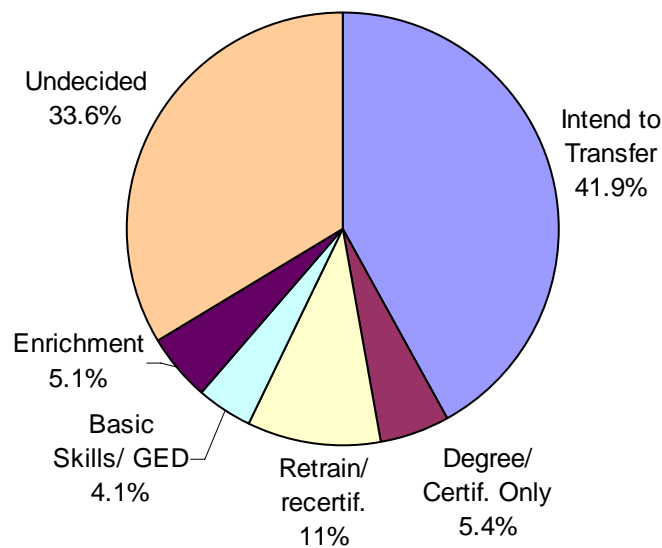


Educational Goal

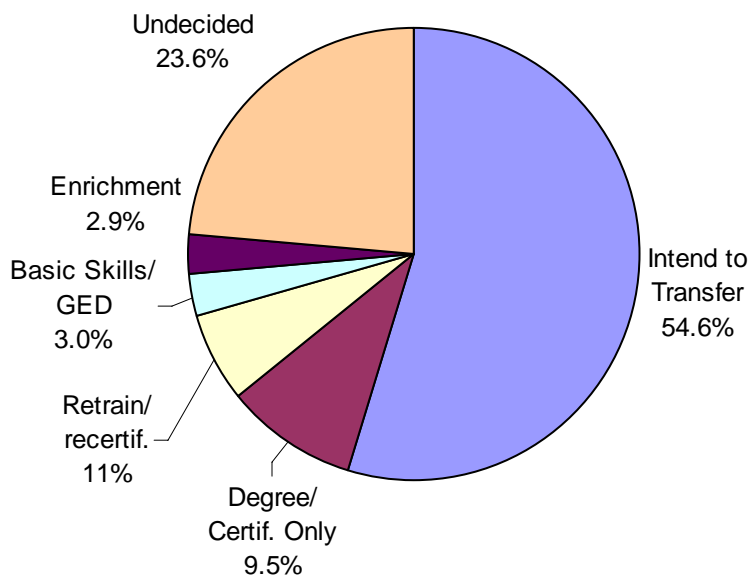
The educational goal of enrolled students is captured on the initial application and may change over the course of a student's career. The two charts below compare the goals of students upon entry and following the matriculation (testing, orientation and counseling) process. Note: not all students go through this process so some educational goals remain unchanged.

The largest percentage of students (42%) indicated an intention to transfer to a 4-year institution as their goal; this percentage grew to 55% after matriculation. The second largest category is "undecided" at 34%, which shrank by 10 points following matriculation. The percentage seeking degrees or certificates nearly doubled after the matriculation process.

Educational Goal - Upon Entry

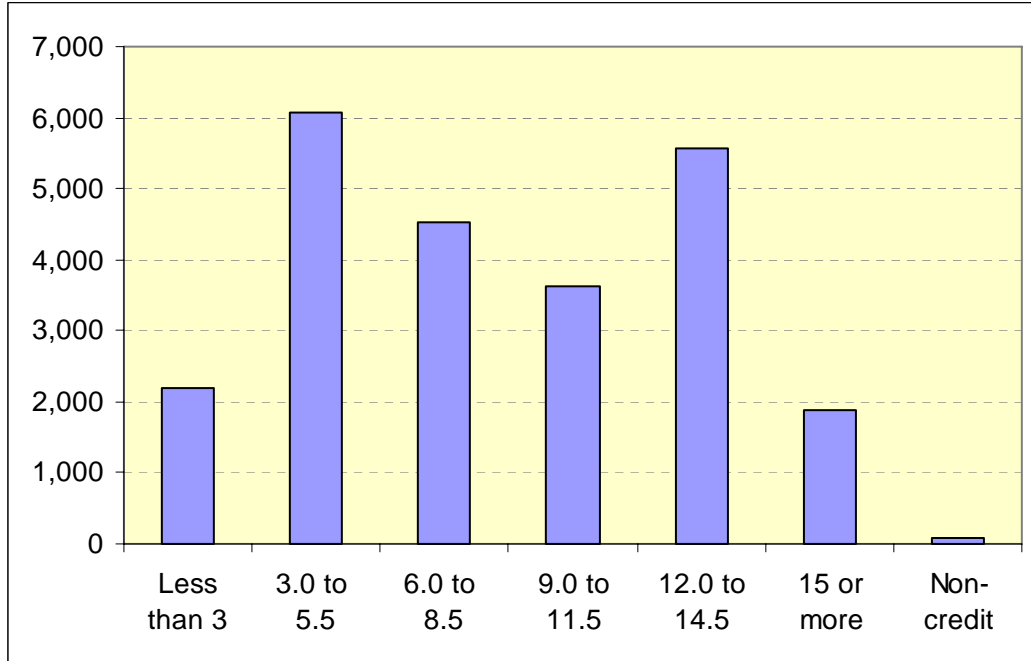


Educational Goal - After Matriculation

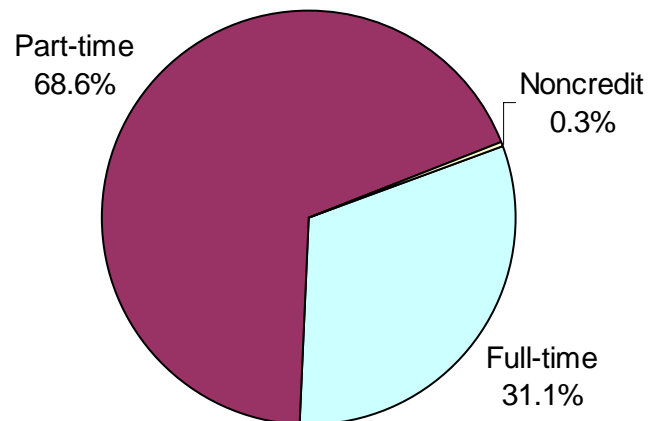


Unit Load

Over 30% of students are enrolled full-time, defined as carrying 12 units or more (see pie chart). In contrast, over one-third are enrolled in fewer than 6 units. Another third falls between these two categories.



Unit Load	Count
Less than 3	2,201
3.0 to 5.5	6,065
6.0 to 8.5	4,513
9.0 to 11.5	3,630
12.0 to 14.5	5,564
15 or more	1,879
Non-credit	76
Total	23,928



Full-time/Part-time Status

Student Retention and Success

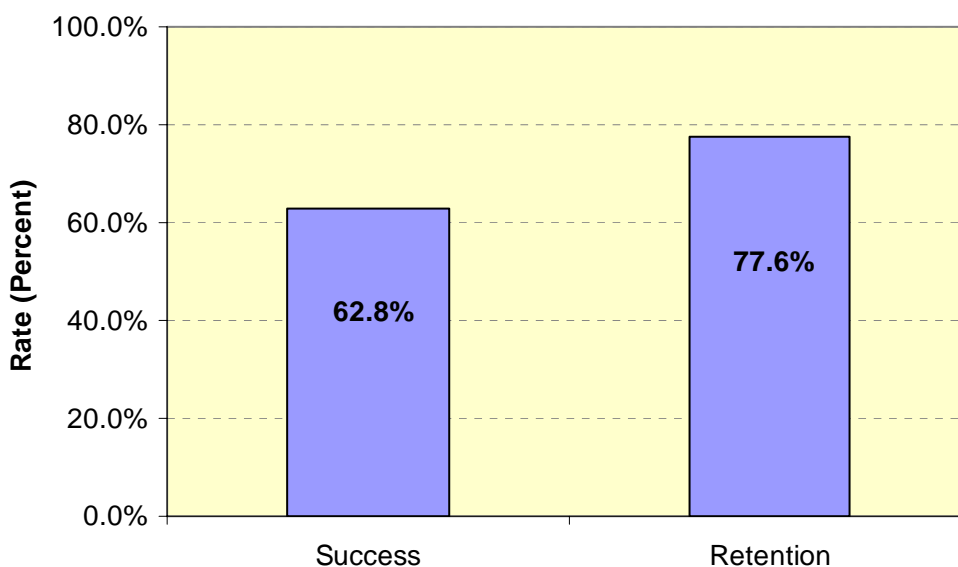
Student academic performance within a term can be measured in several ways. Most common are student *retention* (completing a course, regardless of final grade), *success* (completing a course with a C/CR or better) and Grade Point Average (*GPA*).

Success and retention along with a course grade distribution are provided in the table below. In fall 2006, students were retained at a rate of about 78%. Nearly 63% succeeded by receiving a C/CR or better in a course. The overall term GPA is **2.63**.

Course Grade Distribution, Success and Retention Rates

Grade	Count	%	Rate
A	15,474	24.4	Success: 62.8%
B	11,590	18.3	
C	8,388	13.2	
CR (credit)	4,423	7.0	
D	2,810	4.4	Retention: 77.6%
F	4,895	7.7	
NC (no credit)	1,319	2.1	
Incomplete	345	0.5	
Withdrawal	14,227	22.4	Term GPA: 2.63
Non-Credit	182		
Total	63,653	100.0	

Success and Retention Rates



Enrollment Persistence

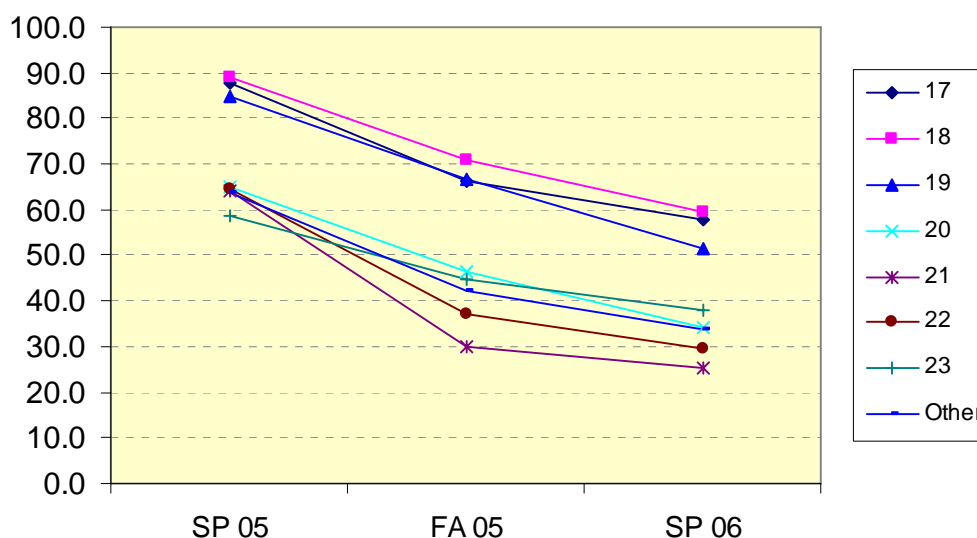
Persistence is a measure of academic program success defined as the rate at which students return to college in subsequent terms. Persistence rates of students who began their academic programs at El Camino in fall 2004 are provided below. A cohort² of full-time, new, degree- or transfer-directed students was tracked over 4 terms of enrollment by age at entering term.

Over 80% of the entering group enrolled for one full academic year; 60% for 3 terms; and 49% for two full years of college. The table and chart below reveal that younger full-time students tend to have higher rates of retention, especially at ages 17 and 18.

Persistence Rates by Age at Entering Term New, Full-time, Degree- or Transfer-Directed Students Entering Term: Fall 2004

Age	Fall 2004	Spring 2005		Fall 2005		Spring 2006	
	n	n	% of FA 04	n	% of FA 04	n	% of FA 04
17	83	73	88.0	55	66.3	48	57.8
18	559	498	89.1	397	71.0	333	59.6
19	178	151	84.8	119	66.9	92	51.7
20	97	63	64.9	45	46.4	33	34.0
21	67	43	64.2	20	29.9	17	25.4
22	51	33	64.7	19	37.3	15	29.4
23	29	17	58.6	13	44.8	11	37.9
Other	154	98	63.6	65	42.2	52	33.8
Total	1218	976	80.1	733	60.2	601	49.3

**Persistence Rates by Age
Full-Time, Degree-/Transfer-Directed New Students
Entering Term: Fall 2004**



² A **cohort** is a group of people with some common trait, who typically are tracked over time. The common trait of the fall 2004 cohort is that they all entered El Camino as new, full-time students with 2-year or 4-year degree goals.