

EL CAMINO COLLEGE-  
COMPTON CENTER  
STUDENT PROFILE

Office of Institutional Research

*Fall 2011*



## Demographic and Enrollment Characteristics Summary

The Student Profile features a selection of demographic and enrollment characteristics of the Fall 2011 student body. A quick summary of many of the characteristics featured in this report is provided below; additional course enrollment variables also are provided.

Pages 4 through 15 provide more detailed information and analysis by topic.

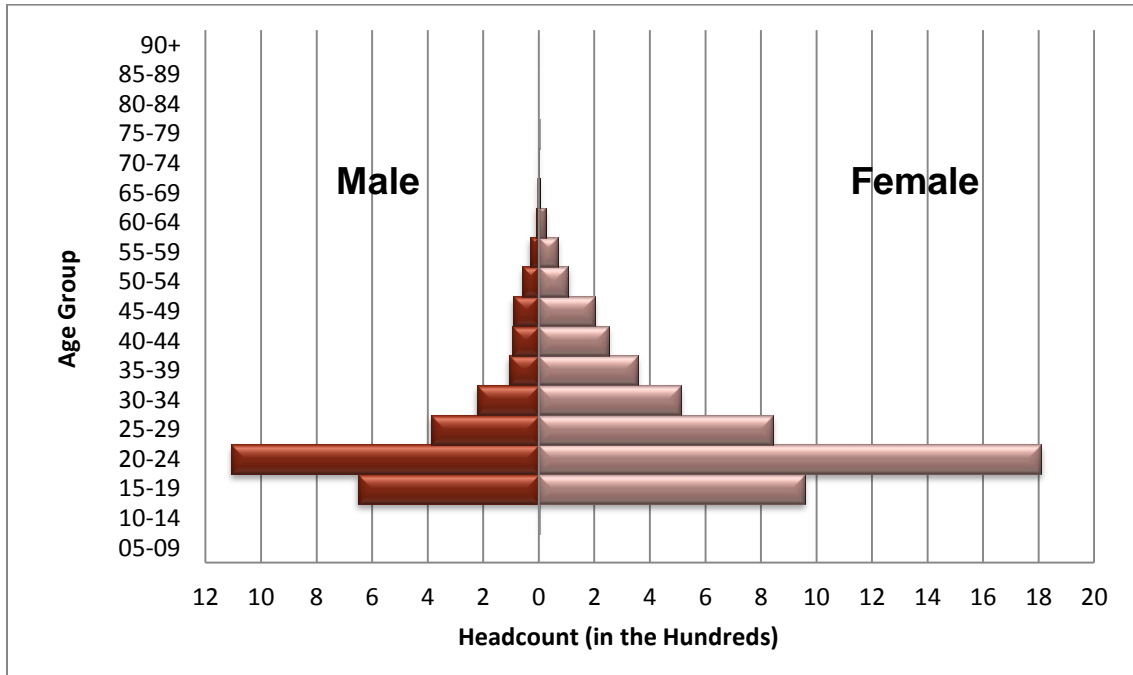
Category	Characteristic	Fall 2011	
		n	%
<i>All Students</i>		7,912	100.0
<b>Gender</b>	Female	5,134	64.9
	Male	2,777	35.1
<b>Age</b>	19 or Less	1,610	20.3
	20 to 24	2,917	36.9
	25 to 29	1,232	15.6
	30 to 34	735	9.3
	35 to 39	465	5.9
	40 to 49	640	8.1
	50 +	313	4.0
<b>Ethnicity</b>	African-American	3,388	42.8
	Amer Ind/Alaskan	14	0.2
	Asian	460	5.8
	Latino	3,288	41.6
	Pacific Islander	74	0.9
	White	319	4.0
	Two or more races	205	2.6
	Unknown or Declined	164	2.1
<b>Residency</b>	California Resident	7,745	97.9
	Out of State	53	0.7
	International	114	1.4
<b>Enrollment Status</b>	First-time Student	2,165	27.4
	Returning	960	12.1
	Continuing	4,486	56.7
	K-12 Special Admit	280	3.5
	Unknown	21	0.3

Category	Characteristic	Fall 2011	
		n	%
<i>All Students</i>		7,912	100.0
<b>Education Level</b>	Not HS Grad	374	4.7
	HS Grad or Equiv.	6,159	77.8
	AA/AS Degree	511	6.5
	Bachelor's or Higher	360	4.6
	K-12 Special Admit	276	3.5
	Unknown	232	2.9
<b>Class Times</b>	Daytime Student	3,337	42.2
	Evening Student	1,616	20.4
	Combination Day/Eve	1,918	24.2
	Irregular	1,041	13.2
<b>Educational Goal</b>	Intend to Transfer	2,295	44.7
	Degree/Certif. Only	599	11.7
	Retrain/Recertif.	360	7.0
	Basic Skills/GED	596	11.6
	Enrichment	153	3.0
	Undecided	1,219	23.7
	Unknown	2,690	52.4
<b>Credit Status</b>	Credit	7,788	98.4
	Non-Credit	124	1.6
<b>Unit Load</b> <i>(At Census)</i>	Fewer than 6 units	3,213	40.6
	6 to 8.5 units	1,505	19.0
	9 to 11.5 units	1,277	16.1
	12 to 14.5 units	1,519	19.2
	15 units or more	398	5.0
<b>Term Units</b>	Credit Students	7788	98.4
	Total Units	53,216.5	
	Average Units/Student	6.8	
<b>Cumulative Units</b>	15 units or fewer	4,088	51.7
	15.5 to 30 units	1,445	18.3
	30.5 to 60 units	1,595	20.2
	Over 60 units	784	9.9
<b>Instruction Method</b> <i>(dup. headcount)</i>	Lecture	18,159	66.9
	Laboratory	6,601	24.3
	Distance Education	2,383	8.8
	Work Experience	0	0.0
	Independent Study	0	0.0
<b>Accounting Method</b> <i>(dup. headcount)</i>	Weekly Census	13,749	72.7
	Daily Census	2,534	13.4
	Positive Attendance	694	3.7
	Ind. Study/Work Exper.	1,933	10.2

## Age by Gender

The age distribution of ECC-Compton Center students is representative of a wide range of age groups but is predominantly made up of young adults. Forty-nine percent of enrolled students are 18 to 23 years old.

Overall, there are more female than male students at the ECC-Compton Center. This difference is most pronounced in the 20-24 age category where there is twice the number of female than male students.



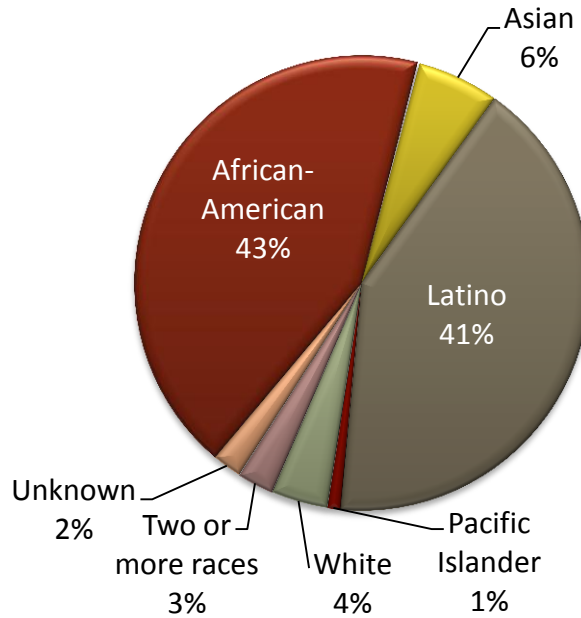
Age	Male	Female	Total
10-14	0	2	2
15-19	652	956	1,608
20-24	1108	1,809	2,917
25-29	389	843	1,232
30-34	223	512	735
35-39	108	357	465
40-44	95	251	346
45-49	93	200	293
50-54	60	106	166
55-59	32	67	99
60-64	11	24	35
65-69	4	4	8
70-74	2	1	3
75-79	0	2	2
<b>Total</b>	<b>2,777</b>	<b>5,134</b>	<b>7,911</b>

Age	Male	Female	Total
18	235	308	543
19	314	447	761
20	339	485	824
21	267	421	688
22	187	333	520
23	180	333	513
<b>Total</b>	<b>1,522</b>	<b>2,327</b>	<b>3,849</b>

\*Total does not add up to fall 2011 enrollment total due to invalid entries for age and gender.

## Ethnicity

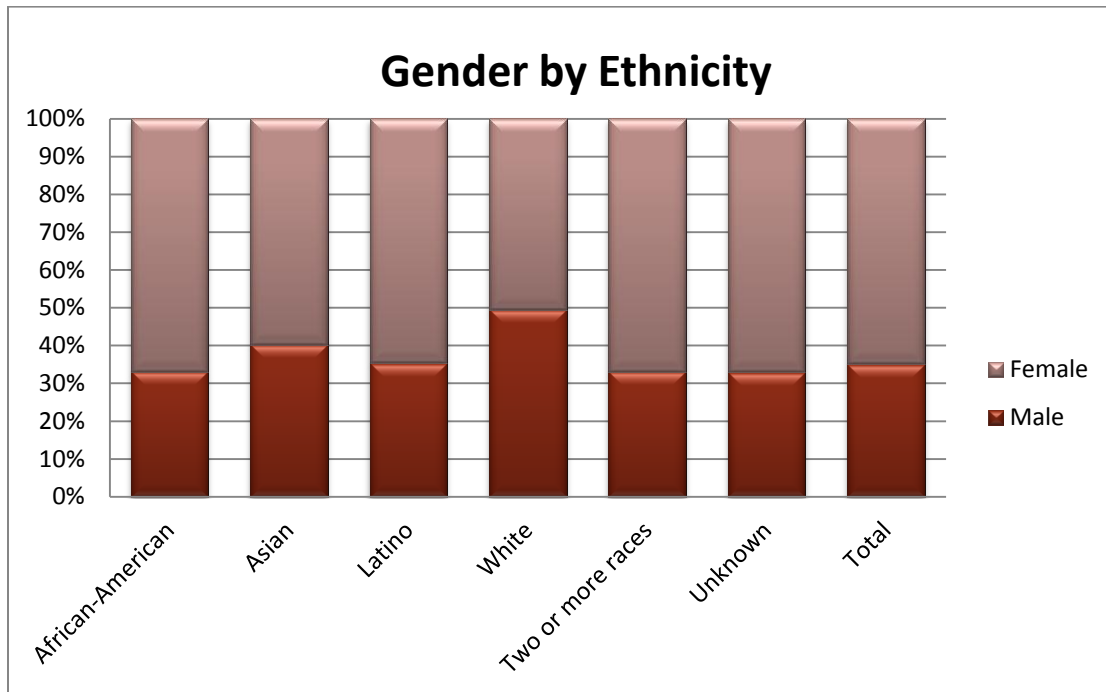
El Camino College - Compton Center has a rich history of ethnic diversity. Forty-three percent of the student body is composed of African-Americans, closely followed by Latinos at 41%. Asian and White represent 6% and 4% of the student population, respectively.



Ethnicity	Count
African-American	3,388
American Indian	14
Asian	460
Latino	3,288
Pacific Islander	74
White	319
Two or more races	205
Unknown	164
<b>Total</b>	<b>7,912</b>

## Gender by Ethnicity

All ethnic groups are comprised of a greater percentage of female than male students. There is a significantly larger percent of female than male African-American students that attend the ECC- Compton Center. There is also a much larger percent of female than male Latino students attending the Center.



Ethnicity	Male	Female	Total
African-American	1,123	2,265	3,388
American Indian	2	12	14
Asian	185	275	460
Latino	1,165	2,122	3,287
Pacific Islander	22	52	74
White	158	161	319
Two or more races	68	137	205
Unknown	54	110	164
<b>Total</b>	<b>2,777</b>	<b>5,134</b>	<b>7,911</b>

\* Total does not add up to Fall 2011 enrollment total of 7,912 due to invalid entries for gender.

## Age by Ethnicity

The table below presents point measures of age for each ethnic group<sup>1</sup>. Overall, ECC-Compton Center students have an average student age of 27, a median age of 23 and a mode of 19. The mean age tends to be considerably higher than the median due to significant numbers of older-aged students. The mode ranges between 15 and 27, depending on the group.

In general, African-Americans, American-Indians and Whites tend to be older while Asians, Latinos, and students who indicated two or more races are relatively younger than the ECC-Compton Center population as a whole.

### Age by Ethnicity Descriptive Statistics

Ethnicity	Count	Mean	Median	Mode
African-American	3,388	28.6	24	20
Amer Ind/Alaskan	14	39.2	27	27
Asian	460	26.3	21	15
Latino	3,288	24.5	21	19
Pacific Islander	74	26.9	25	19
White	319	29.1	23	20
Two or more races	205	24.6	21	19
Unknown	164	30.2	25	21
<b>Total</b>	<b>7,912</b>	<b>26.7</b>	<b>23</b>	<b>19</b>

### Age Distribution by Ethnicity (following page)

As suggested above, most ethnic groups at El Camino College - Compton Center represent varying percentages of the student body relative to age or age group. African-Americans are more likely to be found among the working adult and older populations. Younger ages (pre-college and traditional college age) are more likely Latino students.

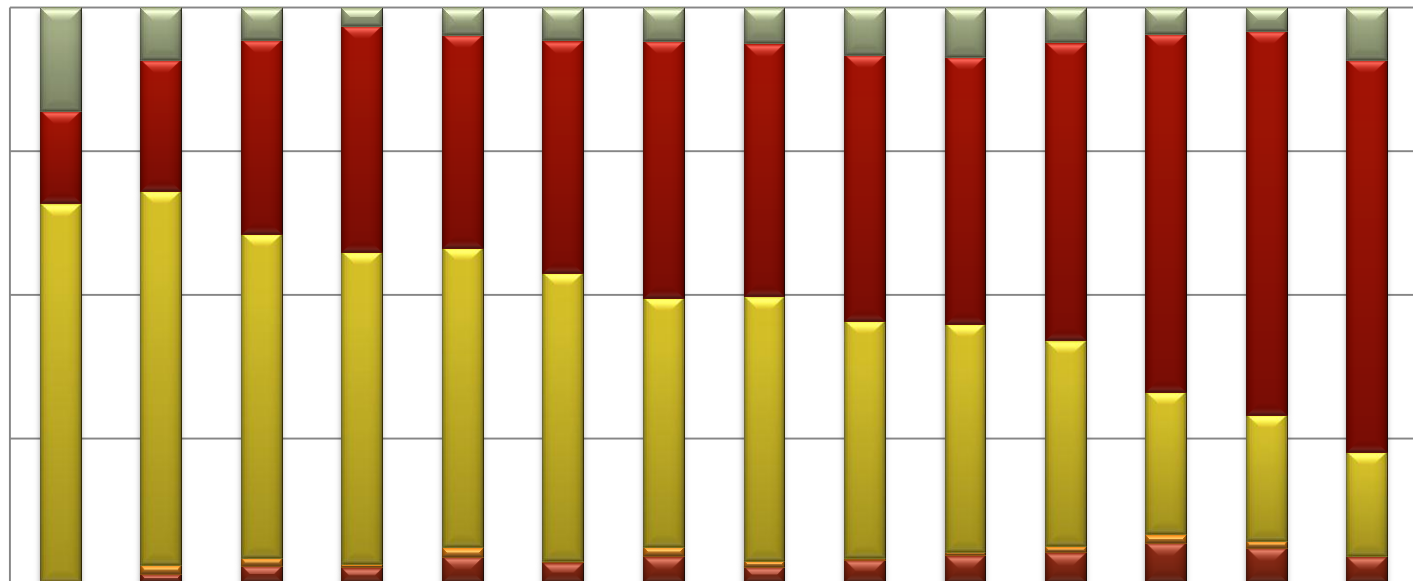
The chart on the following page represents the *percentage* of students from each ethnicity within each age or age group. Smaller groups (American Indian/Alaskan Native) and unidentifiable groups (decline to state and unknown) were excluded from the chart but are found in the statistics table above.

---

<sup>1</sup> Definitions of descriptive statistics used to measure age: *mean* age is the average age, or the single age that best describes the ECC student body; *median* age is the age at which 50% of the ECC population lies above and below; and *mode* age is the single most common age.



## Age Distribution by Ethnicity



	<17	17	18	19	20	21	22	23	24	25-29	30-39	40-49	50-64	65+
Asian	17%	9%	5%	3%	4%	5%	5%	6%	8%	8%	6%	4%	4%	8%
African Amer	16%	22%	32%	37%	36%	39%	42%	41%	44%	44%	49%	60%	63%	63%
Latino	64%	64%	54%	52%	50%	48%	40%	42%	39%	38%	34%	24%	21%	17%
Pac Islander	0%	1%	1%	1%	2%	0%	2%	1%	0%	1%	1%	1%	1%	0%
White	0%	1%	3%	2%	4%	3%	4%	2%	4%	5%	5%	7%	6%	4%

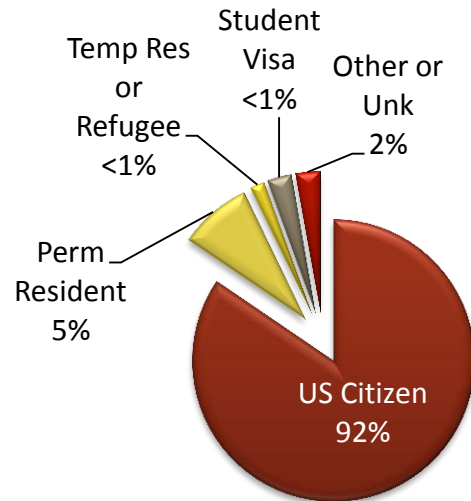
■ White 
 ■ Pac Islander 
 ■ Latino 
 ■ African Amer 
 ■ Asian

This chart shows the percentage of each age group represented by the major ethnic groups at El Camino College - Compton Center. For example, 19 year-olds are 3% Asian, 37% African-American, 52% Latino, 1% Pacific Islander and 2% White, compared with 30 to 39 year-olds who are 6% Asian, 49% African-American, 34% Latino, 1% Pacific Islander and 5% White.

## Citizenship and Residency Status

The vast majority of students at the ECC- Compton Center are U.S. citizens (92%) while another 5% are permanent residents. Ninety-eight percent of all students are officially California residents.

Most ECC- Compton Center students (43%) come from within the Compton Community College district boundaries, with 18% coming from the Los Angeles Community College District.



## Residency

Description	Count	%
Compton CCD	3,388	42.8%
Los Angeles CCD	1,425	18.0%
Long Beach CCD	1,168	14.8%
El Camino CCD	786	9.9%
Cerritos CCD	126	1.6%
Other Cal. CC Districts	852	10.8%
<b>California Total</b>	<b>7,745</b>	<b>97.9%</b>
US Res, Outside California	36	0.5%
AB540 Student Residency	17	0.2%
<b>Out of State Total</b>	<b>53</b>	<b>0.7%</b>
Outside United States	114	1.4%
<b>International Total</b>	<b>114</b>	<b>1.4%</b>
<b>Total</b>	<b>7,912</b>	

## Disability Status

About 2% of ECC-Compton Center students have a registered disability, with the same percentage of females and males registered. Aside from unspecified disabilities, the most common disabilities are mobility impaired and psychological, composing 40% of the registered disabilities combined.

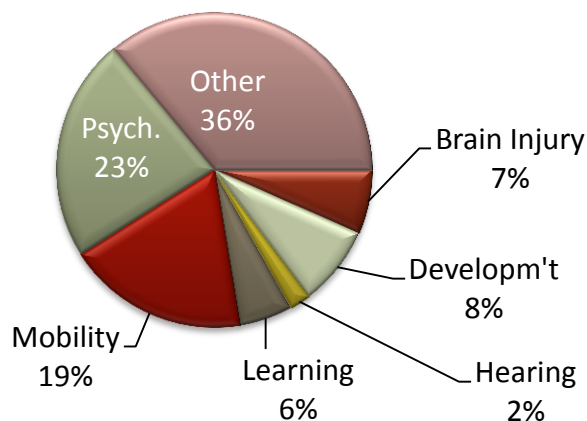
### Disability Status by Gender

Status	Female		Male		Total	
	n	%	n	%	n	%
Registered Disability	125	2.4	64	2.3	189	2.4
No Disability Registered	5,009	97.6	2,713	97.7	7,722	97.6
<b>Total</b>	<b>5,134</b>		<b>2,777</b>		<b>7,911</b>	

### Primary Disability by Gender

Primary Disability	Female		Male		Total	
	n	%	n	%	n	%
Acquired Brain Injury	9	7.2	3	4.7	12	6.3
Developmentally Delayed Learner	9	7.2	6	9.4	15	7.9
Hearing Impaired	2	1.6	2	3.1	4	2.1
Learning Disability	8	6.4	2	3.1	10	5.3
Mobility Impaired	22	17.6	12	18.8	34	18.0
Psychological Disability	29	23.2	13	20.3	42	22.2
Speech/Language Impaired	0	0.0	0	0.0	0	0.0
Visually Impaired	5	4.0	1	1.6	6	3.2
Other Disability	41	32.8	25	39.1	66	34.9
<b>Total</b>	<b>125</b>		<b>64</b>		<b>189</b>	

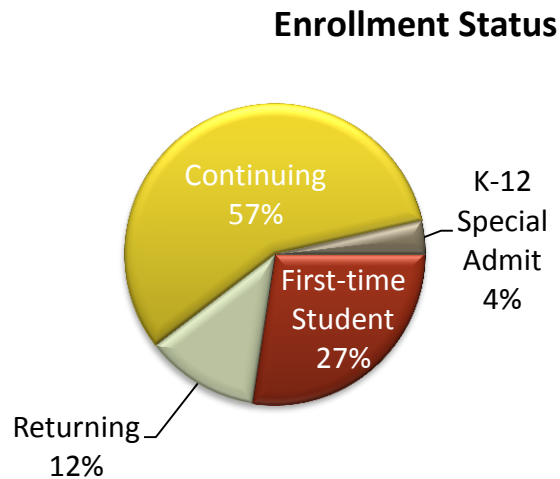
### Primary Disability



## Enrollment Status and Education Level

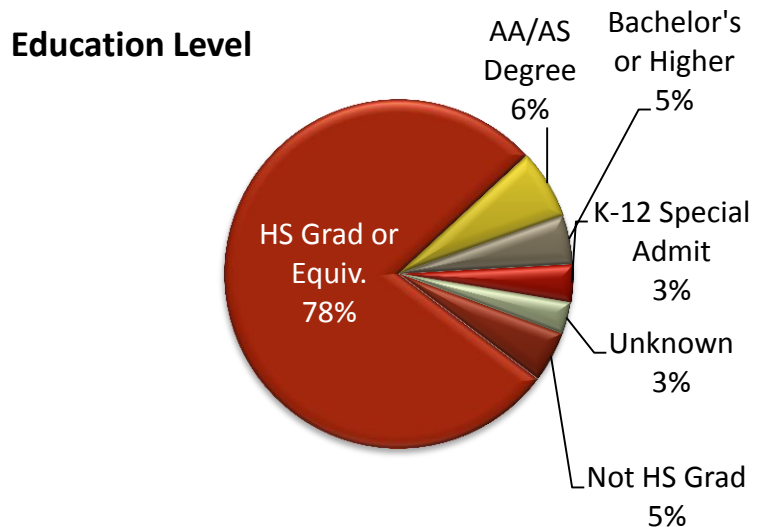
Most ECC-Compton Center students are continuing students from the previous spring term. Twelve percent of students are returning, indicating that they had enrolled at the ECC-Compton Center in at least one term before spring 2011. Twenty-seven percent of students are new first-time students to the Center. Some students take classes at the Center while they are still in high school and have a special admissions status. They represent 4% of the student body in fall 2011.

Enrollment Status	Count
First-time Student	2,816
Returning	1,018
Continuing	3,918
K-12 Special Admit	980
Unknown	21
<b>Total</b>	<b>7,912</b>



Seventy-eight percent of ECC-Compton Center students have at least a high school diploma or equivalent. Eleven percent of students have an Associate's degree or higher and 8% of students are not high school graduates.

Education Level	Count
Not HS Grad	374
HS Grad or Equiv.	6,159
AA/AS Degree	511
Bachelor's or Higher	360
K-12 Special Admit	276
Unknown	232
<b>Total</b>	<b>7,912</b>

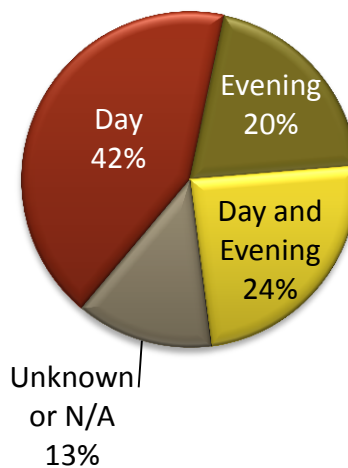


## Campus Enrollment Patterns

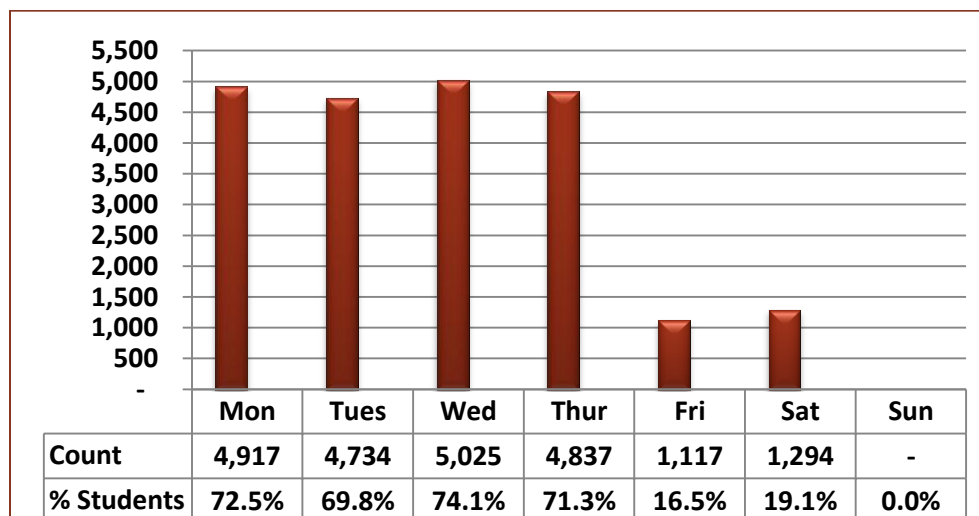
Courses at El Camino College - Compton Center are offered 6 days a week and during both daytime and evening hours to serve its district community. Sixty-six percent of students enroll in at least one daytime class, while 20% are enrolled exclusively in evening classes. Forty-two percent of ECC-Compton Center students are enrolled only during daytime hours. Another 24% enroll in a combination of day and evening courses. The “unknown” percentage includes students enrolled exclusively in distance education courses.

An average 4,878 students are on campus attending classes Monday through Thursday (bottom chart), while an average 1,206 are enrolled on Fridays and Saturdays. This is due to the MTWTh class schedule at the ECC-Compton Center campus.

## Day/Evening Attendance



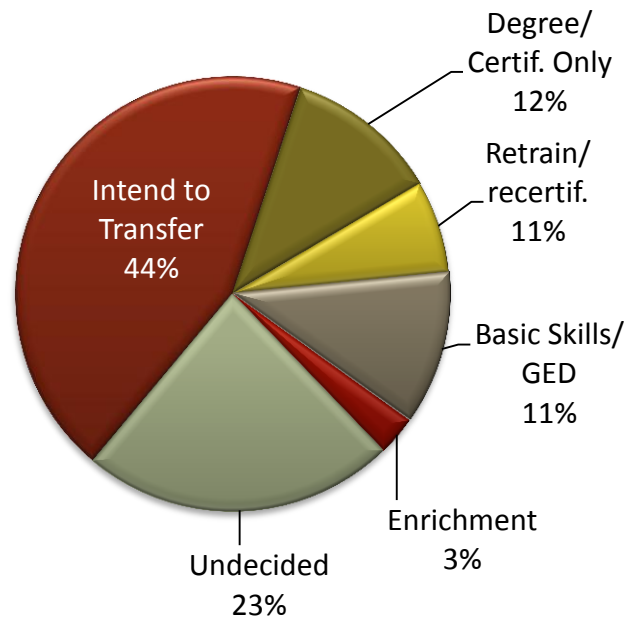
## Students on Campus by Day of the Week



## ***Educational Goal***

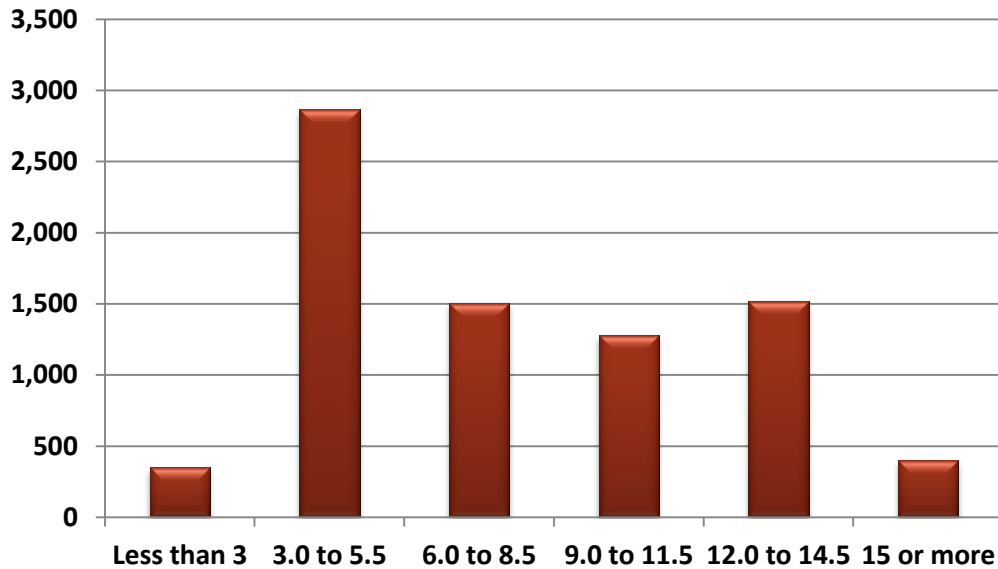
The educational goal of enrolled students is captured on the initial application and may change over the course of a student's career. The largest percentage of students (44%) indicated an intention to transfer to a 4-year institution as their goal. Twenty-three percent of students indicated that they are undecided about their educational goal. Another 23% intend to earn a degree or certificate or be retrained or recertified in their respective fields.

### **Educational Goal - Upon Entry**

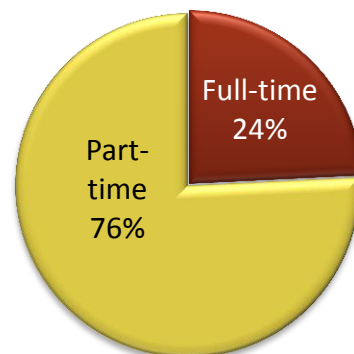


## Unit Load

Twenty-four percent of students are enrolled full-time, defined as carrying 12 units or more in the fall session (see pie chart). In contrast, 41% of students are enrolled in fewer than 6 units.



Unit Load	Count
Less than 3	349
3.0 to 5.5	2,864
6.0 to 8.5	1,505
9.0 to 11.5	1,277
12.0 to 14.5	1,519
15 or more	398
<b>Total</b>	<b>7,912</b>



**Full/Part-time Status**

## Student Retention and Success

Student academic performance within a term can be measured in several ways. The most common methods are student *retention* (completing a course, regardless of final grade), *success* (completing a course with a C/CR or better) and Grade Point Average (*GPA*).

Success and retention along with a course grade distribution are provided in the table below. In fall 2011, students were retained at a rate of 76%. Close to 60% succeeded by receiving a C/CR or better in a course. The overall average term GPA is **2.48**.

### Course Grade Distribution, Success and Retention Rates

Grade	Count	%	Rate
A	3,527	19.0	Success: <b>59.3%</b>
B	3,489	18.8	
C	2,842	15.3	
CR (credit)	1,154	6.2	
D	1,092	5.9	Retention: <b>76.0%</b>
F	1,518	8.2	
NC (no credit)	416	2.2	
Incomplete	78	0.4	
Drop	962	5.2	Term GPA: <b>2.48</b>
Withdrawal	3,502	18.8	
Non-Credit	0	0.0	
<b>Total</b>	<b>18,580</b>	<b>100.0</b>	

### Success and Retention Rates

