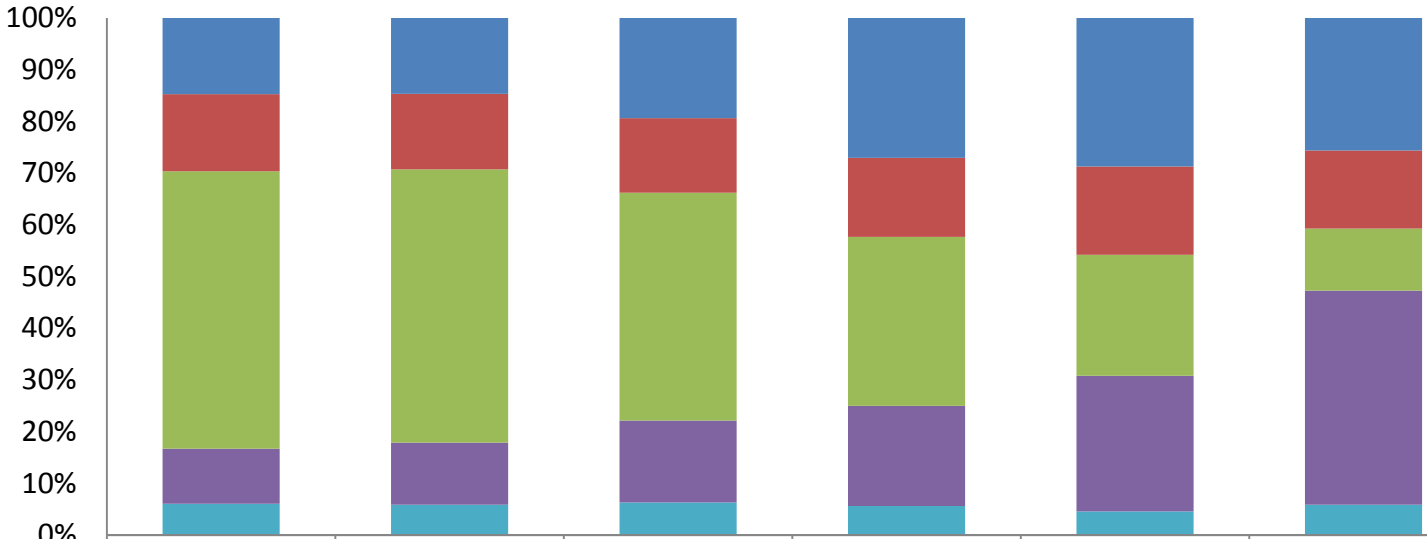


# Enrollment – Age by Ethnicity

**2014-2015**



	19 or less	20-24	25-34	35-44	45-54	55+
<span style="color: blue;">■</span> African-American	15%	15%	19%	27%	29%	26%
<span style="color: red;">■</span> Asian	15%	15%	14%	15%	17%	15%
<span style="color: green;">■</span> Latino	54%	53%	44%	33%	23%	12%
<span style="color: purple;">■</span> White	11%	12%	16%	19%	26%	41%
<span style="color: teal;">■</span> Other	6%	6%	6%	6%	5%	6%

	19 or less	20-24	25-34	35-44	45-54	55+
African-American	1,455	1,866	1,247	503	281	195
Asian	1,476	1,868	930	285	167	115
Latino	5,314	6,731	2,843	608	229	91
White	1,052	1,532	1,023	360	257	315
Other	601	753	407	105	45	45
<b>Total</b>	<b>9,898</b>	<b>12,750</b>	<b>6,450</b>	<b>1,861</b>	<b>979</b>	<b>761</b>

Other Includes: American Indian or Alaskan Native, Pacific Islander, Two or More Races, and Unknown