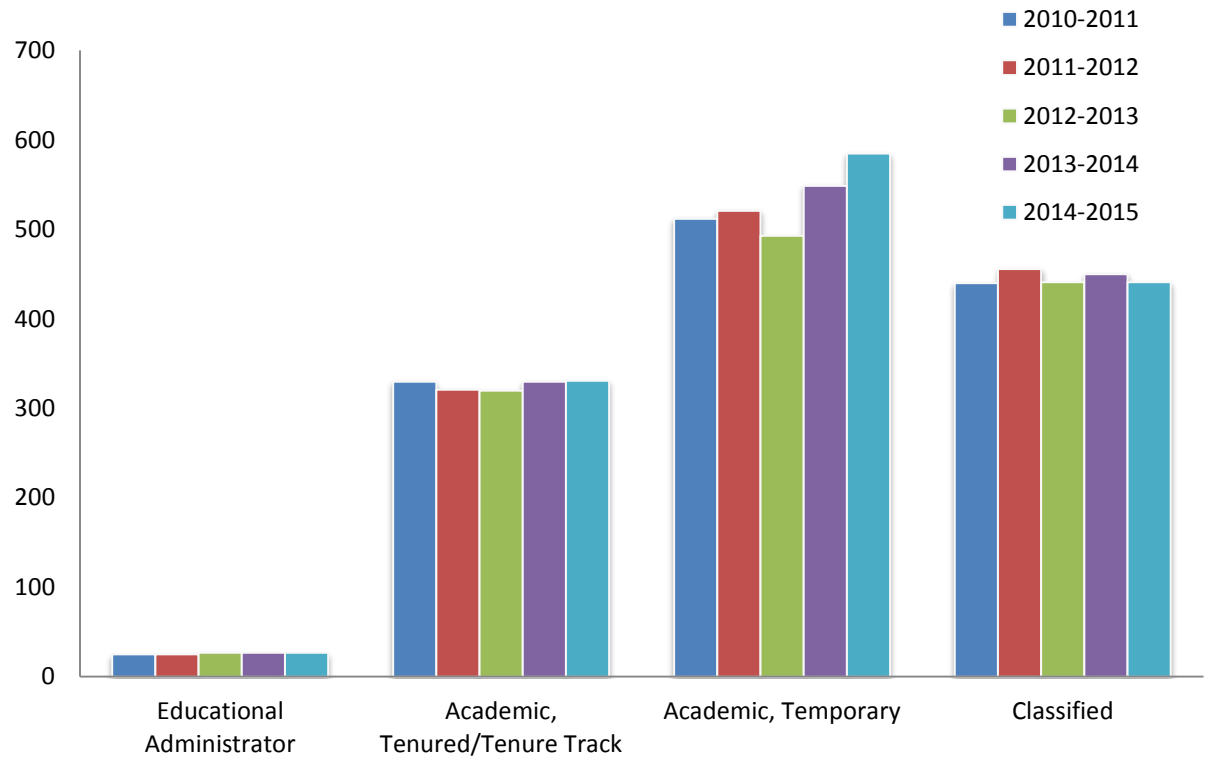
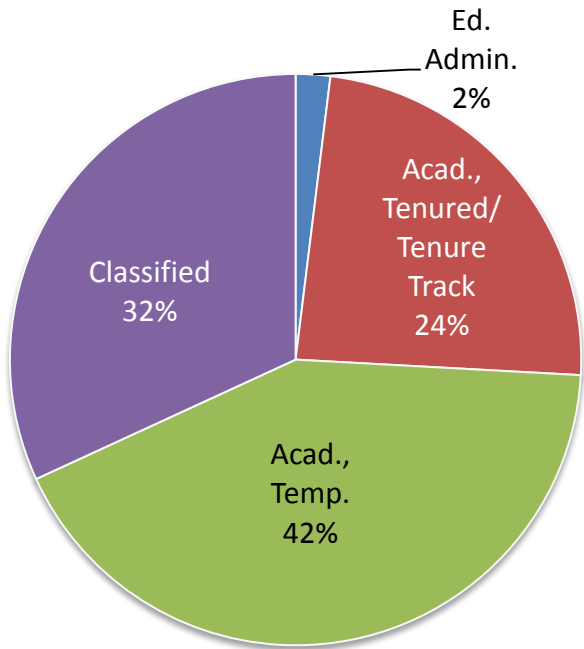


Employee Workforce Distribution

Employee demographic data represent Fall profiles

2014-2015



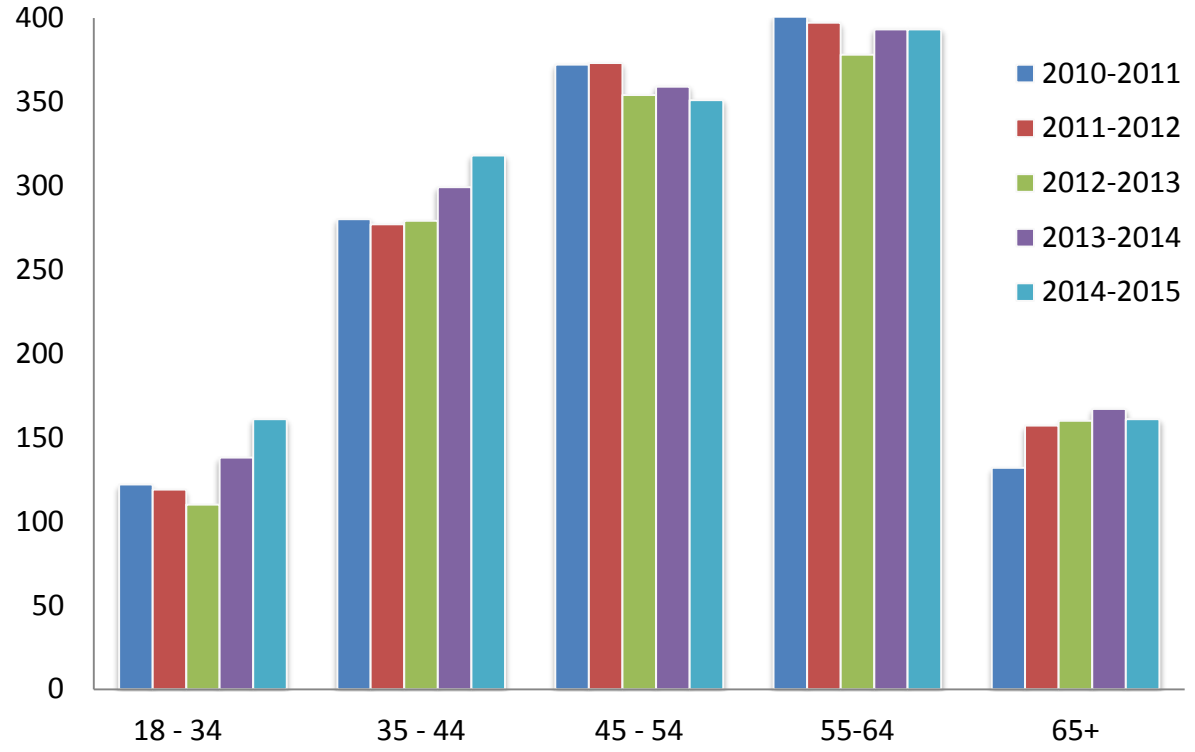
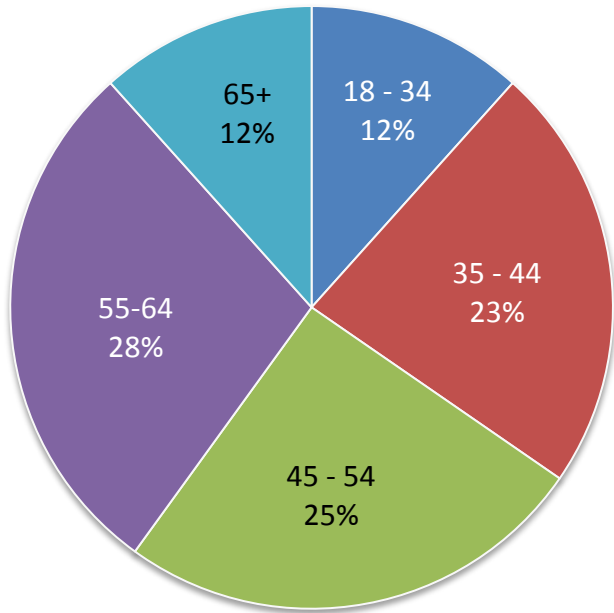
	2010-11	2011-12	2012-13	2013-14	2014-15
Educational Administrator	25	25	27	27	27
Academic, Tenured/Tenure Track	330	321	320	330	331
Academic, Temporary	512	521	493	549	585
Classified	440	456	441	450	441
Total	1,307	1,323	1,281	1,356	1,384

Academic staff includes instructors, counselors and librarians.
Academic, Temporary include those who hold adjunct and/or part-time positions.

Employee by Age

Employee demographic data represent Fall profiles

2014-2015

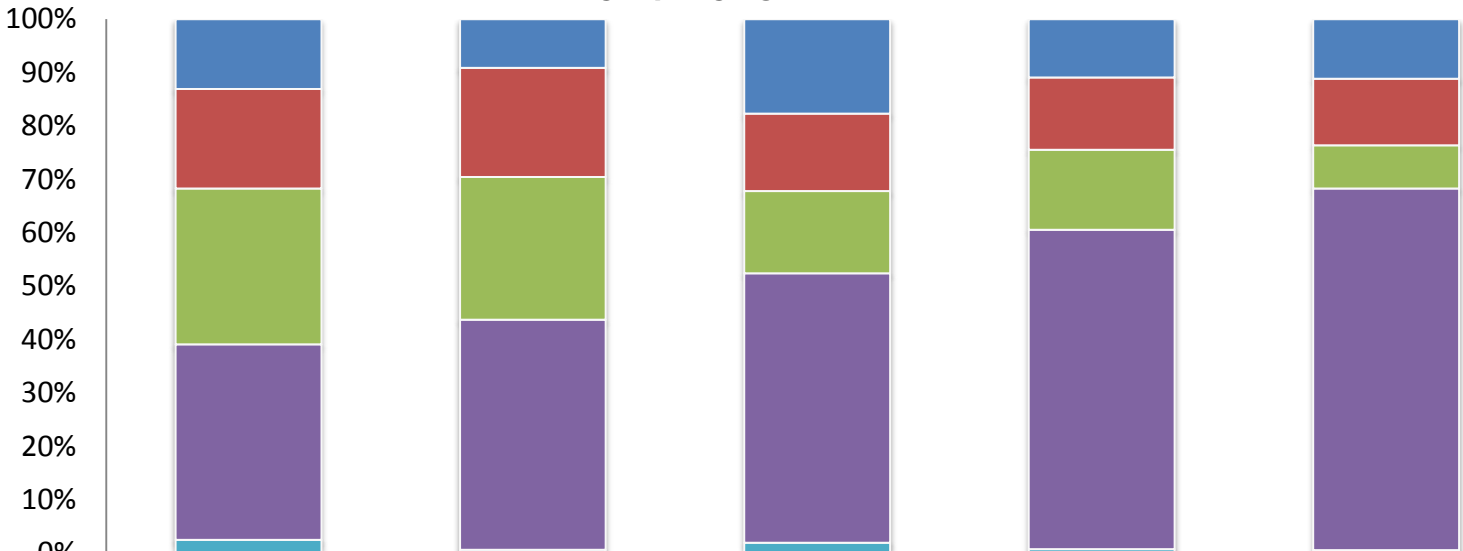


	2010-11	2011-12	2012-13	2013-14	2014-15
18-34	122	119	110	138	161
35-44	280	277	279	299	318
45-54	372	373	354	359	351
55-64	401	397	378	393	393
65+	132	157	160	167	161
Total	1,307	1,323	1,281	1,356	1,384

Employee – Age by Ethnicity

Employee demographic data represent Fall profiles

2014-2015



	18 to 34	35 - 44	45 - 54	55-64	65+
■ African-American	13%	9%	18%	11%	11%
■ Asian	19%	20%	15%	13%	12%
■ Latino	29%	27%	15%	15%	8%
■ White	37%	43%	50%	60%	68%
■ Other	2%	1%	2%	1%	1%

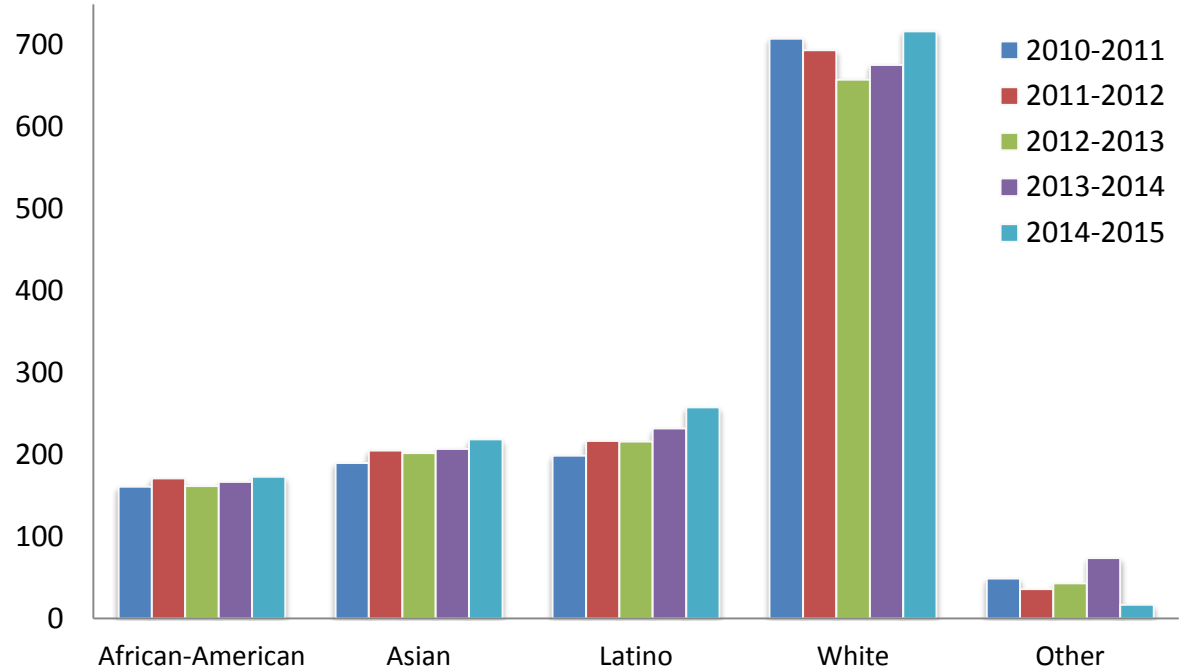
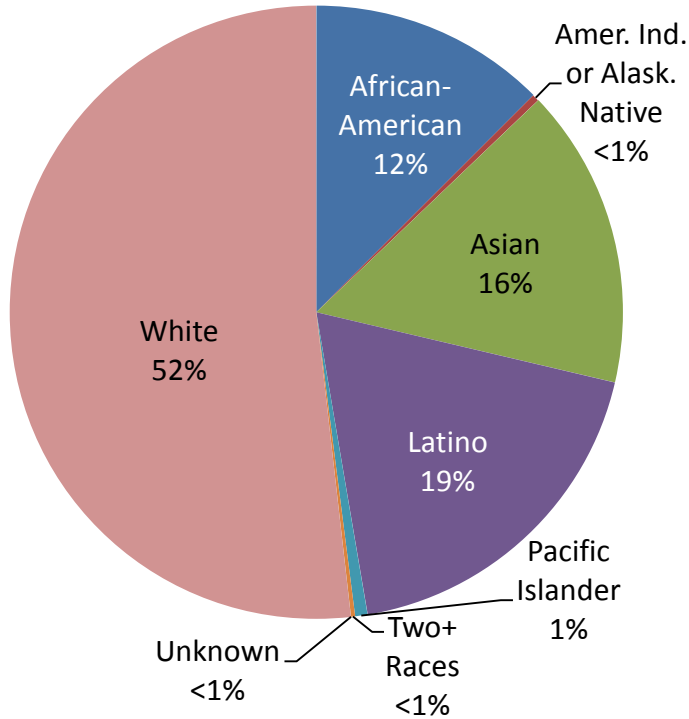
	18 to 34	35 - 44	45 - 54	55-64	65+
African-American	21	29	62	43	18
Asian	30	65	51	53	20
Latino	47	85	54	59	13
White	59	137	177	235	109
Other	4	2	7	3	1
Total	161	318	351	393	161

Other Includes: American Indian or Alaskan Native, Pacific Islander, Two or More Races, and Unknown

Employee by Ethnicity

Employee demographic data represent Fall profiles

2014-2015



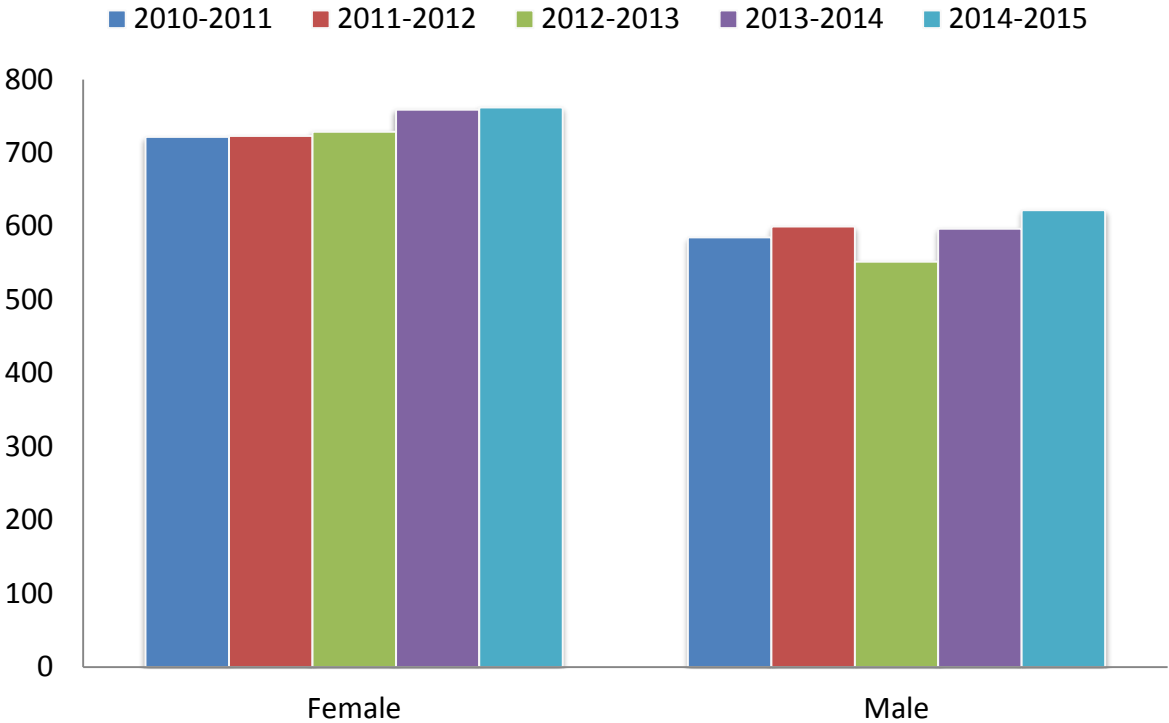
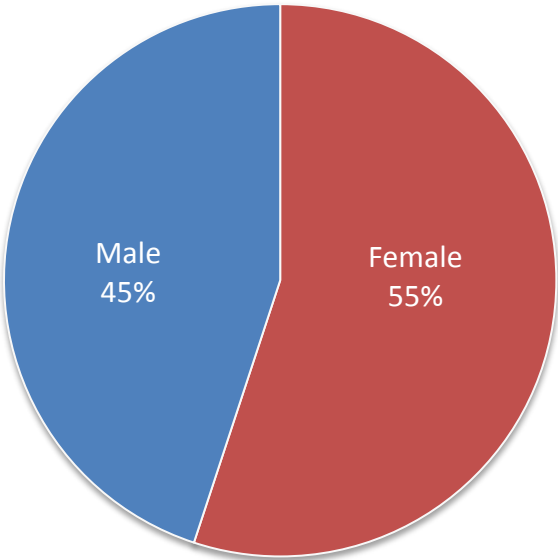
Other Includes: Amer. Ind. or Alask. Native, Pacific Islander, Two+ Races, and Unknown

	2010-11	2011-12	2012-13	2013-14	2014-15
African-American	161	171	162	167	173
Amer. Ind. or Alask. Native	3	2	2	3	5
Asian	190	205	202	207	219
Latino	199	217	216	232	258
Pacific Islander	12	12	12	12	9
Two or More Races	1	2	3	2	3
Unknown or Decline	33	20	26	57	0
White	708	694	658	676	717
Total	1,307	1,323	1,281	1,356	1,384

Employee by Gender

Employee demographic data represent Fall profiles

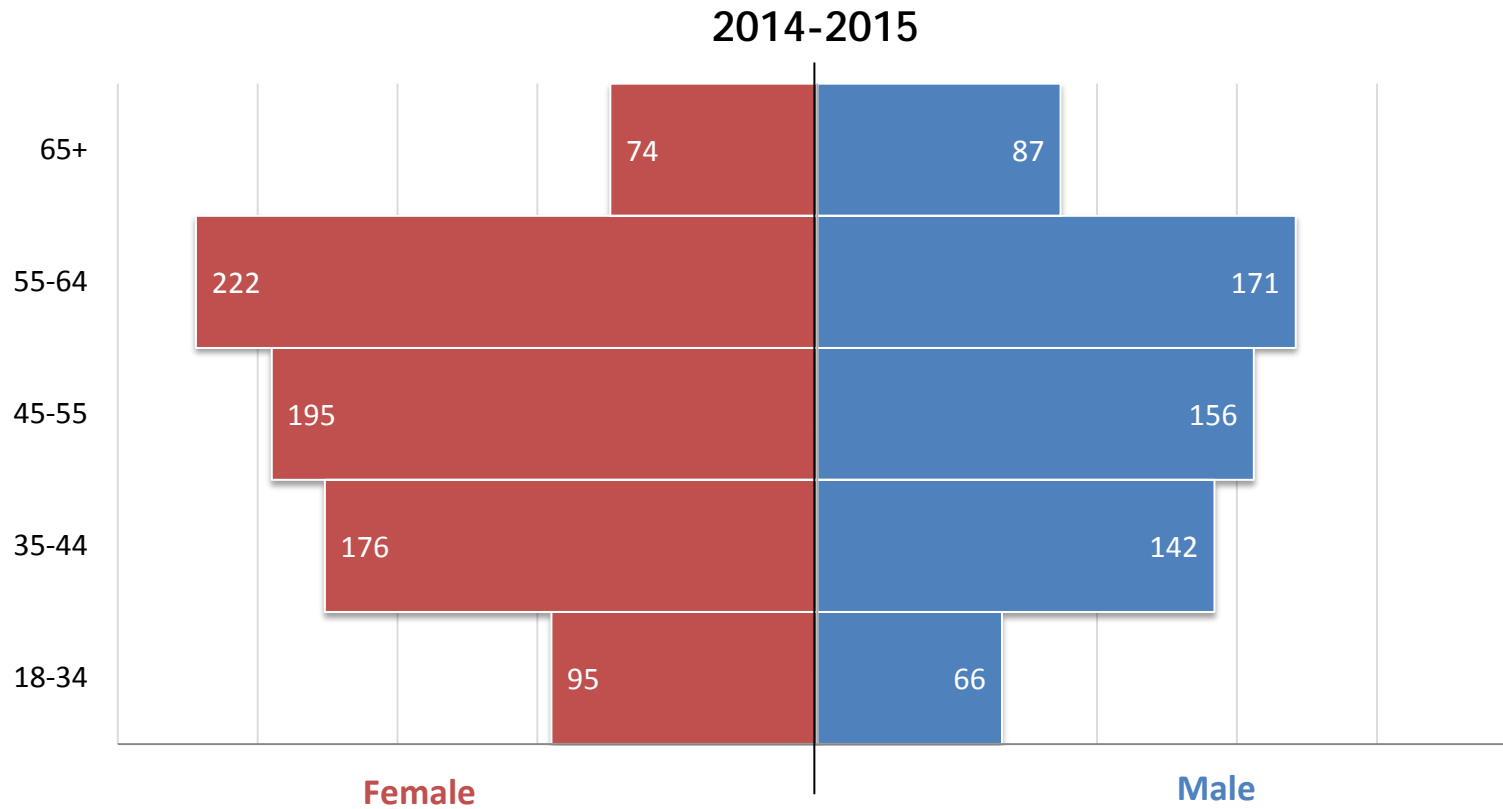
2014-2015



	2010-11	2011-12	2012-13	2013-14	2014-15
Female	722	723	729	759	762
Male	585	600	552	597	622
<i>Total</i>	<i>1,307</i>	<i>1,323</i>	<i>1,281</i>	<i>1,356</i>	<i>1,384</i>

Employee – Gender by Age

Employee demographic data represent Fall profiles

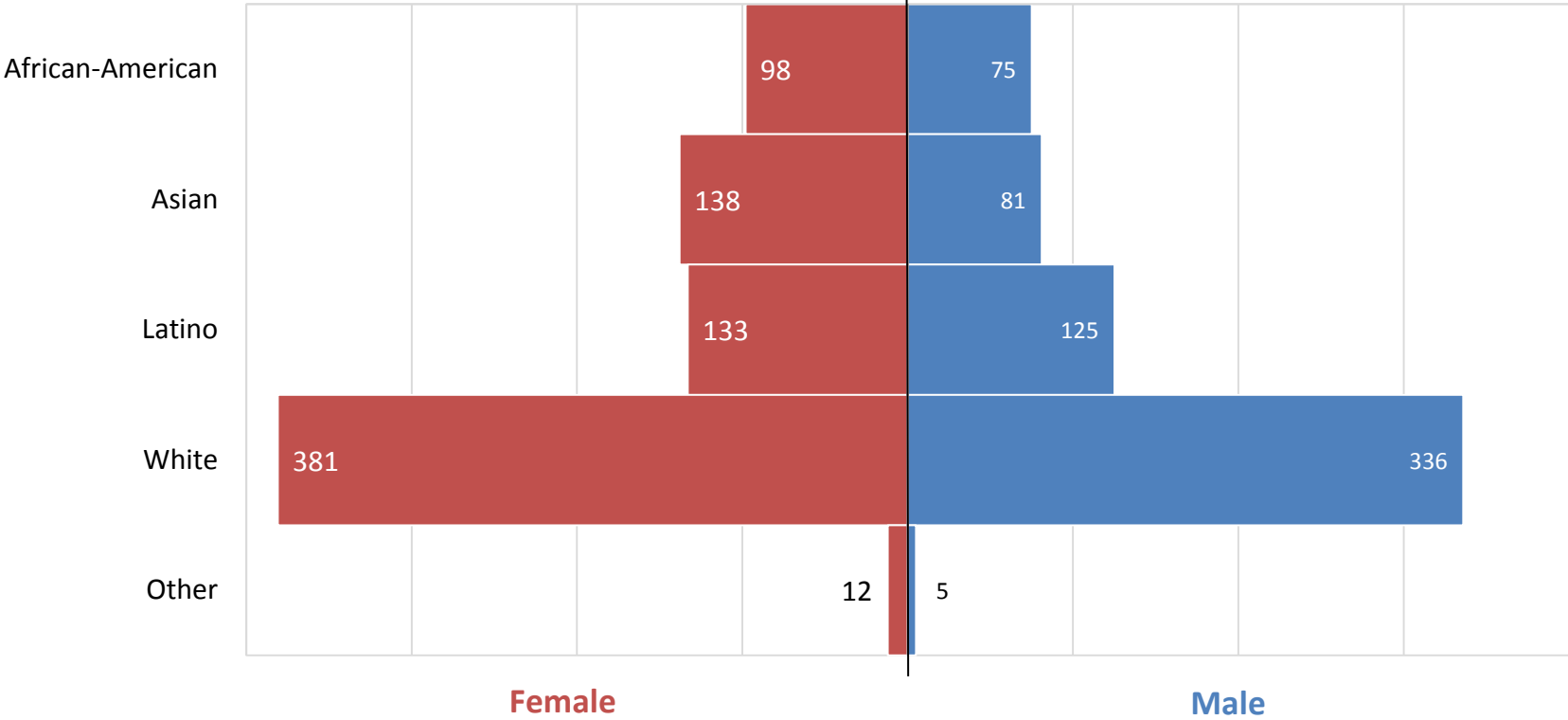


	18-34	35-44	45-54	55-64	65+
Female	59%	55%	56%	56%	46%
Male	41%	45%	44%	44%	54%

Employee – Gender by Ethnicity

Employee demographic data represent Fall profiles

2014-2015



	African-American	Asian	Latino	White	Other
Female	57%	63%	52%	53%	71%
Male	43%	37%	48%	47%	29%

Other Includes: American Indian or Alaskan Native, Pacific Islander, Two or More Races, and Unknown