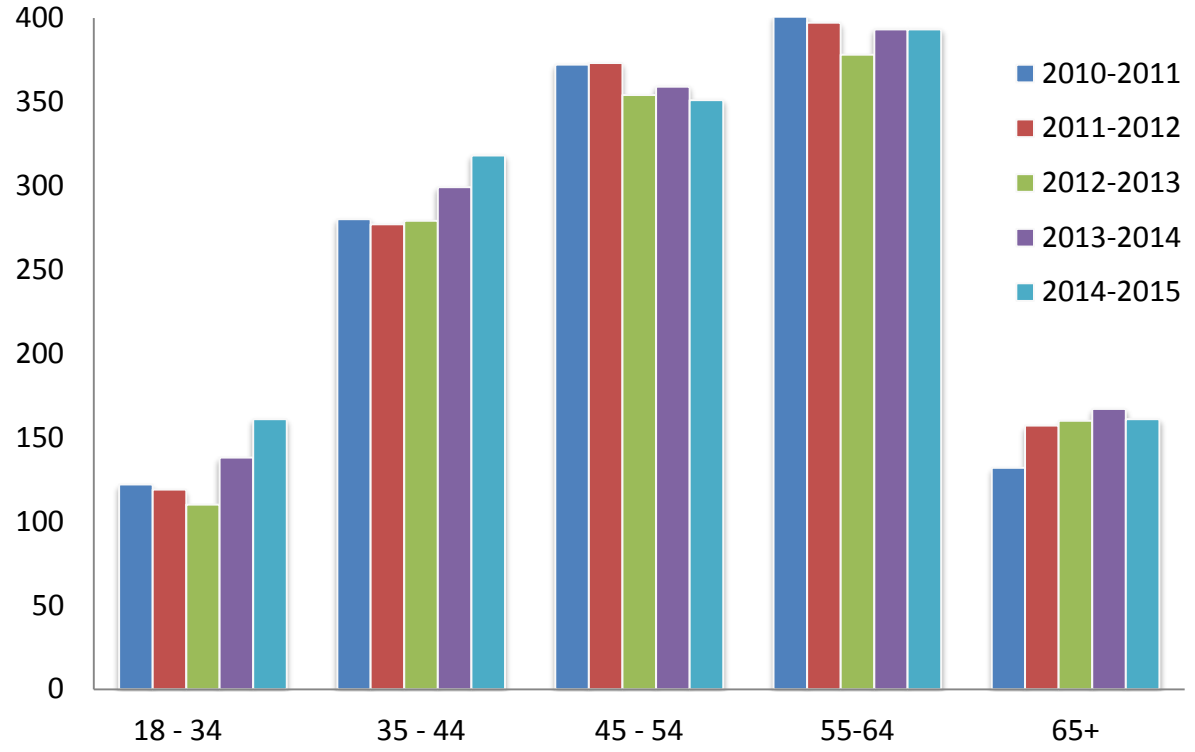
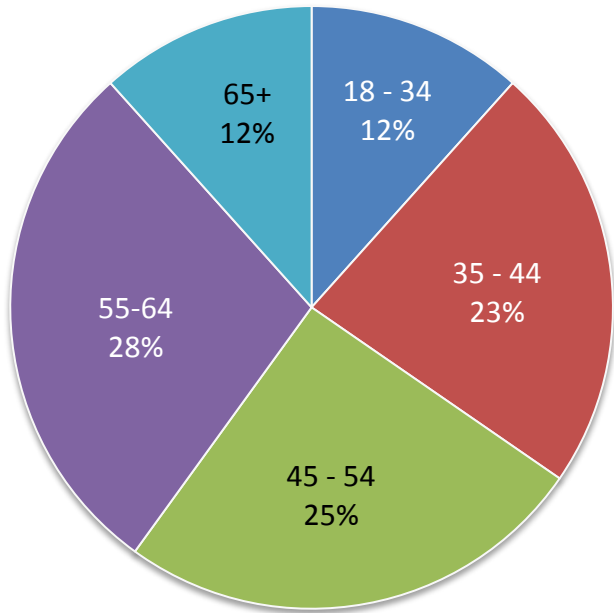


Employee by Age

Employee demographic data represent Fall profiles

2014-2015



	2010-11	2011-12	2012-13	2013-14	2014-15
18-34	122	119	110	138	161
35-44	280	277	279	299	318
45-54	372	373	354	359	351
55-64	401	397	378	393	393
65+	132	157	160	167	161
Total	1,307	1,323	1,281	1,356	1,384