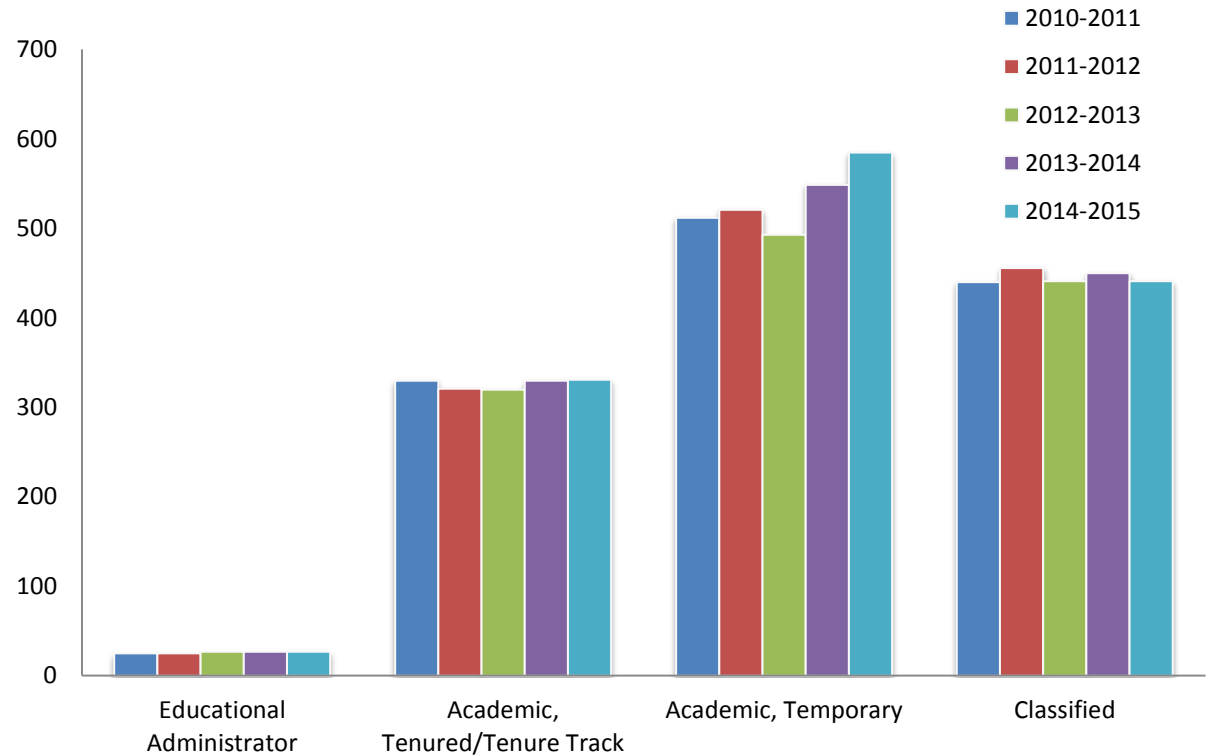
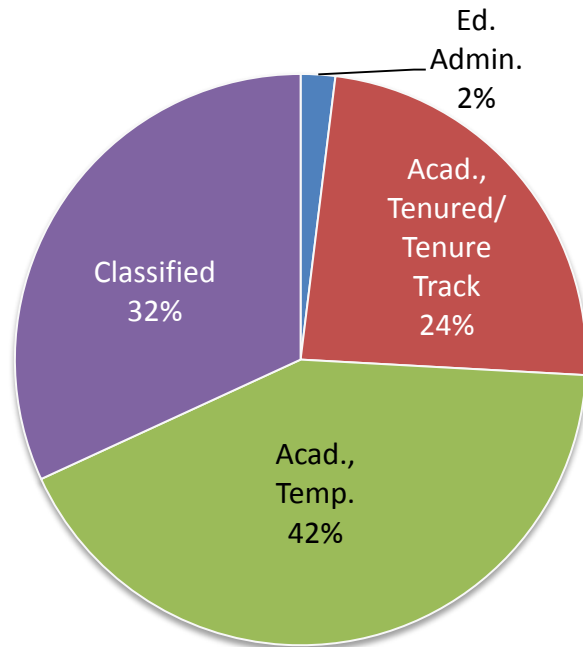


# Employee Workforce Distribution

Employee demographic data represent Fall profiles

**2014-2015**



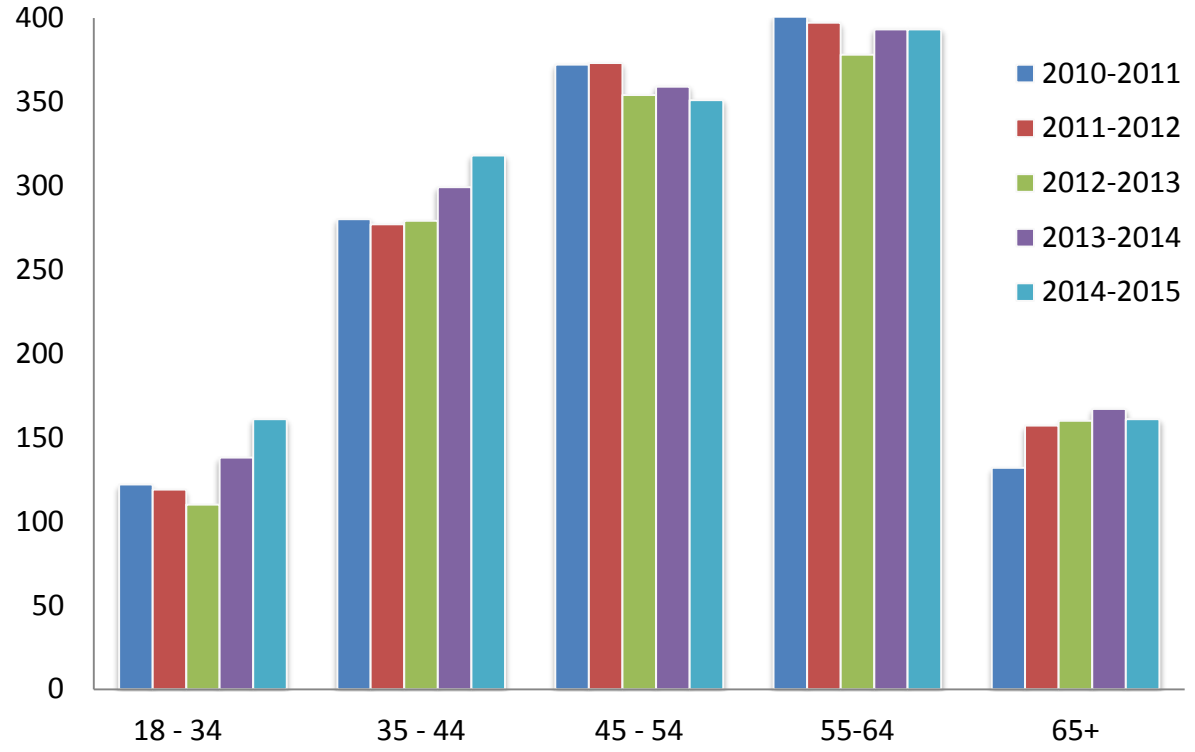
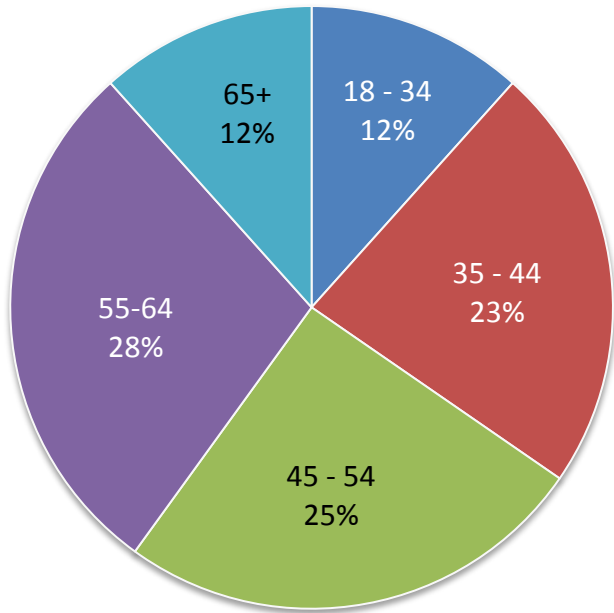
	2010-11	2011-12	2012-13	2013-14	2014-15
Educational Administrator	25	25	27	27	27
Academic, Tenured/Tenure Track	330	321	320	330	331
Academic, Temporary	512	521	493	549	585
Classified	440	456	441	450	441
<b>Total</b>	<b>1,307</b>	<b>1,323</b>	<b>1,281</b>	<b>1,356</b>	<b>1,384</b>

Academic staff includes instructors, counselors and librarians.  
Academic, Temporary include those who hold adjunct and/or part-time positions.

# Employee by Age

Employee demographic data represent Fall profiles

**2014-2015**

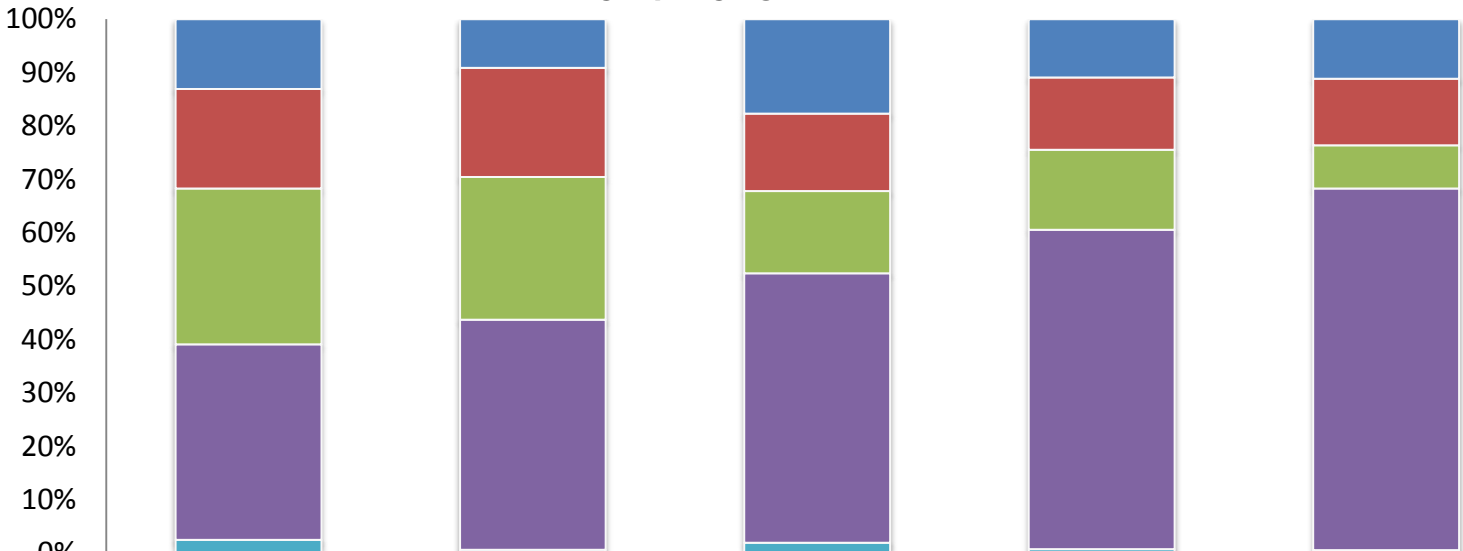


	2010-11	2011-12	2012-13	2013-14	2014-15
18-34	122	119	110	138	161
35-44	280	277	279	299	318
45-54	372	373	354	359	351
55-64	401	397	378	393	393
65+	132	157	160	167	161
<b>Total</b>	<b>1,307</b>	<b>1,323</b>	<b>1,281</b>	<b>1,356</b>	<b>1,384</b>

# Employee – Age by Ethnicity

Employee demographic data represent Fall profiles

**2014-2015**



	18 to 34	35 - 44	45 - 54	55-64	65+
<span style="color: blue;">■</span> African-American	13%	9%	18%	11%	11%
<span style="color: red;">■</span> Asian	19%	20%	15%	13%	12%
<span style="color: green;">■</span> Latino	29%	27%	15%	15%	8%
<span style="color: purple;">■</span> White	37%	43%	50%	60%	68%
<span style="color: cyan;">■</span> Other	2%	1%	2%	1%	1%

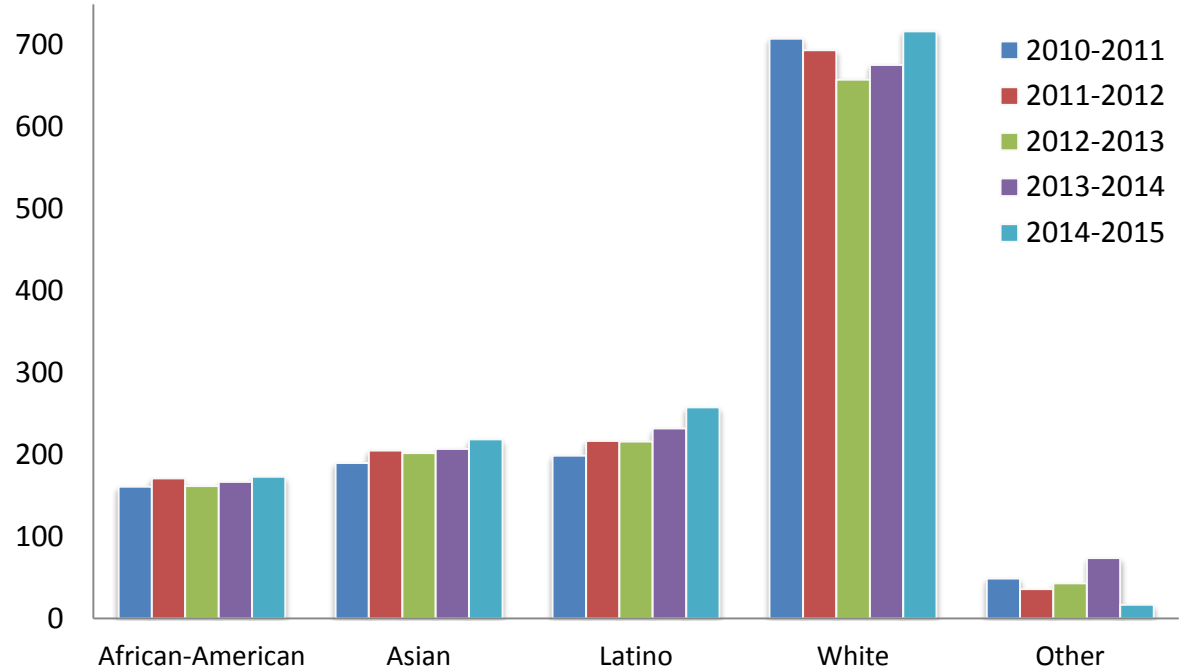
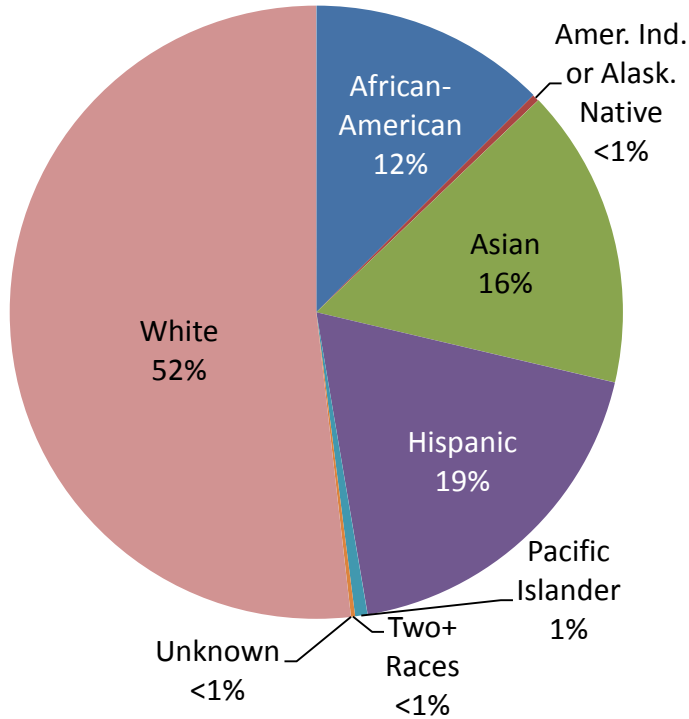
	18 to 34	35 - 44	45 - 54	55-64	65+
African-American	21	29	62	43	18
Asian	30	65	51	53	20
Latino	47	85	54	59	13
White	59	137	177	235	109
Other	4	2	7	3	1
<b>Total</b>	<b>161</b>	<b>318</b>	<b>351</b>	<b>393</b>	<b>161</b>

Other Includes: American Indian or Alaskan Native, Pacific Islander, Two or More Races, and Unknown

# Employee by Ethnicity

Employee demographic data represent Fall profiles

**2014-2015**



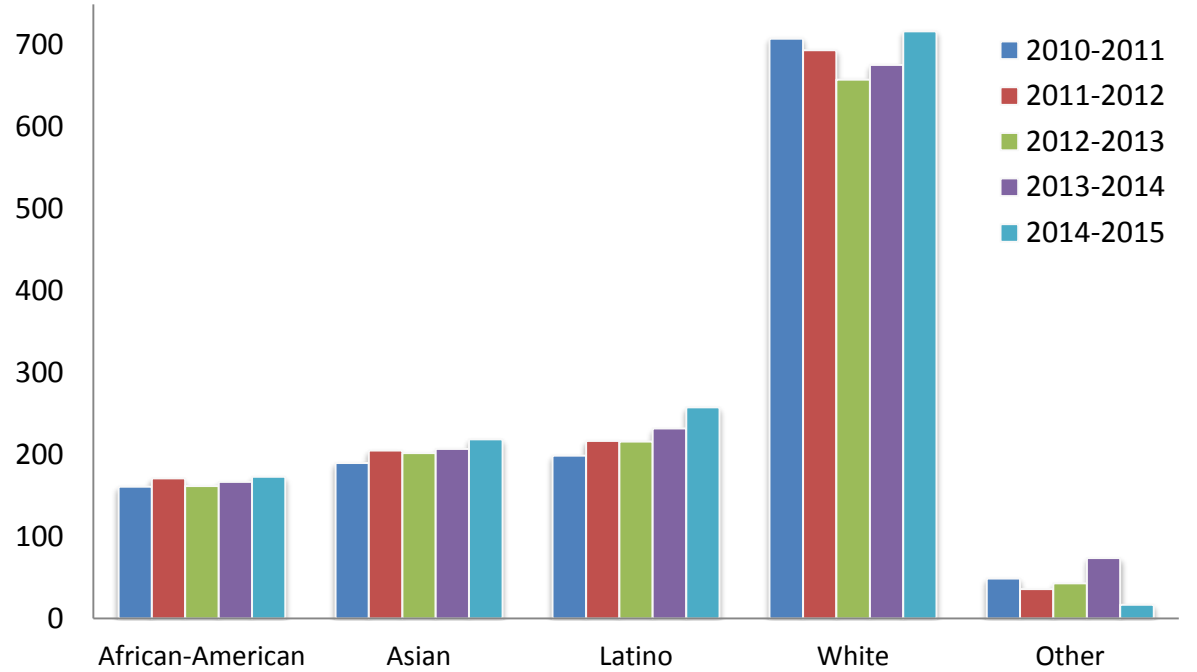
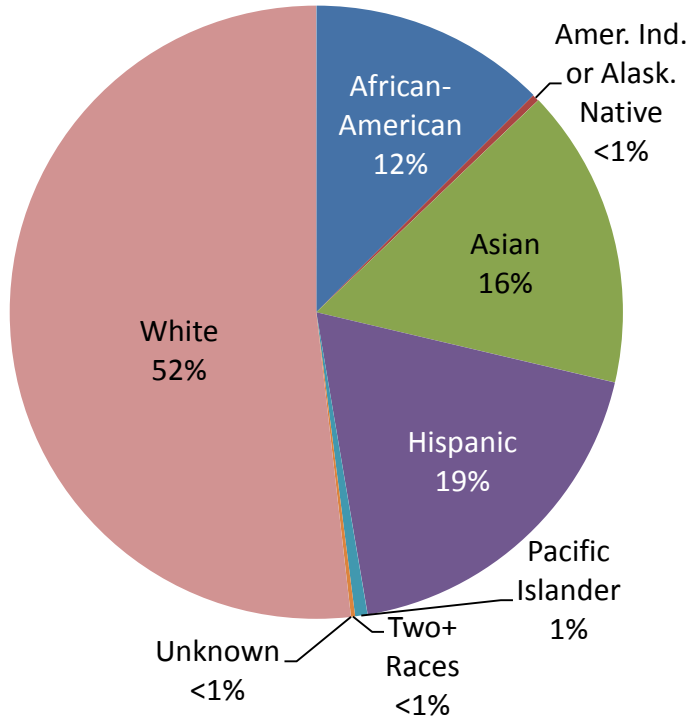
Other Includes: Amer. Ind. or Alask. Native, Pacific Islander, Two+ Races, and Unknown

	2010-11	2011-12	2012-13	2013-14	2014-15
African-American	161	171	162	167	173
Amer. Ind. or Alask. Native	3	2	2	3	5
Asian	190	205	202	207	219
Latino	199	217	216	232	258
Pacific Islander	12	12	12	12	9
Two or more races	1	2	3	2	3
Unknown or Decline	33	20	26	57	0
White	708	694	658	676	717
<b>Total</b>	<b>1,307</b>	<b>1,323</b>	<b>1,281</b>	<b>1,356</b>	<b>1,384</b>

# Employee by Ethnicity

Employee demographic data represent Fall profiles

**2014-2015**



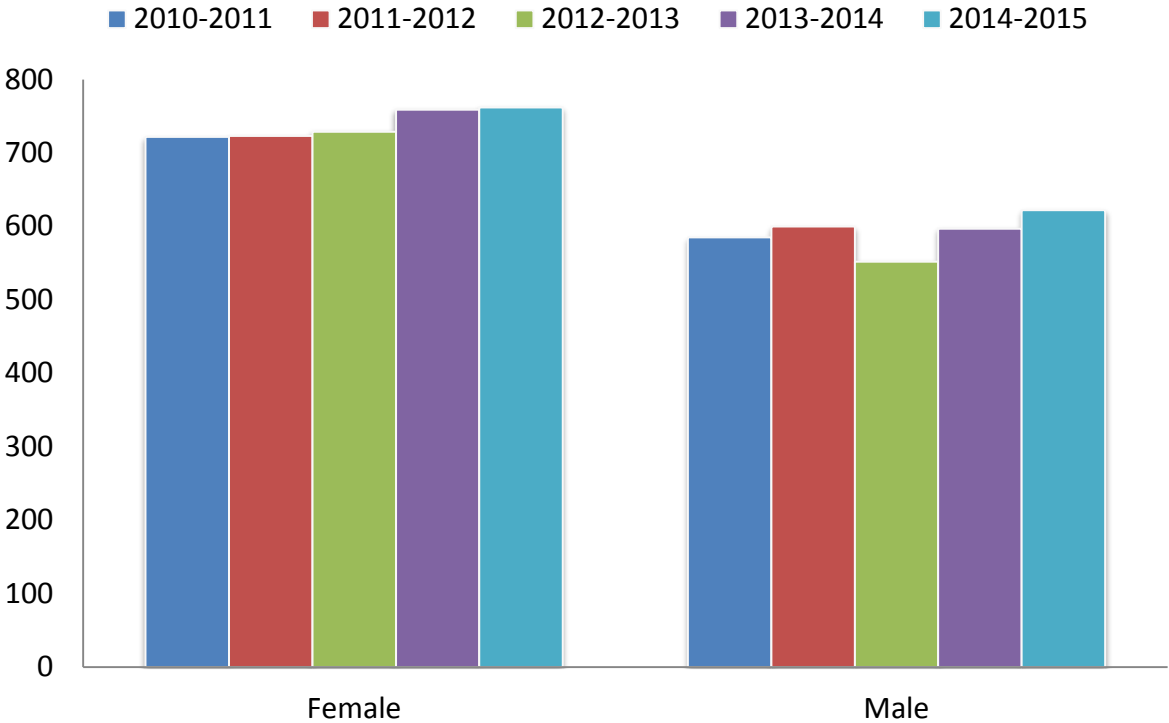
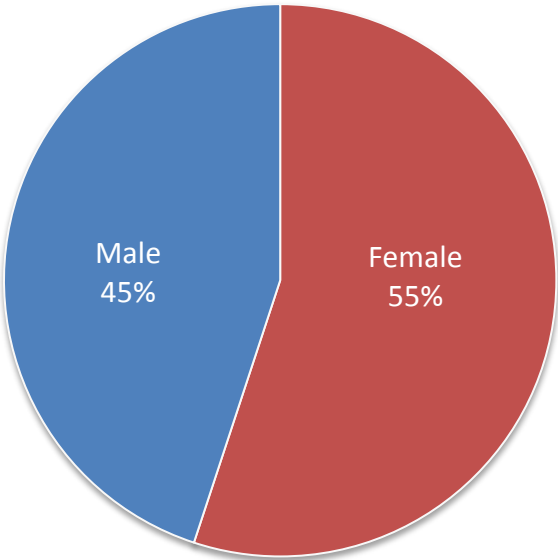
Other Includes: Amer. Ind. or Alask. Native, Pacific Islander, Two+ Races, and Unknown

	2010-11	2011-12	2012-13	2013-14	2014-15
African-American	161	171	162	167	173
Amer. Ind. or Alask. Native	3	2	2	3	5
Asian	190	205	202	207	219
Latino	199	217	216	232	258
Pacific Islander	12	12	12	12	9
Two or more races	1	2	3	2	3
Unknown or Decline	33	20	26	57	0
White	708	694	658	676	717
<b>Total</b>	<b>1,307</b>	<b>1,323</b>	<b>1,281</b>	<b>1,356</b>	<b>1,384</b>

# Employee by Gender

Employee demographic data represent Fall profiles

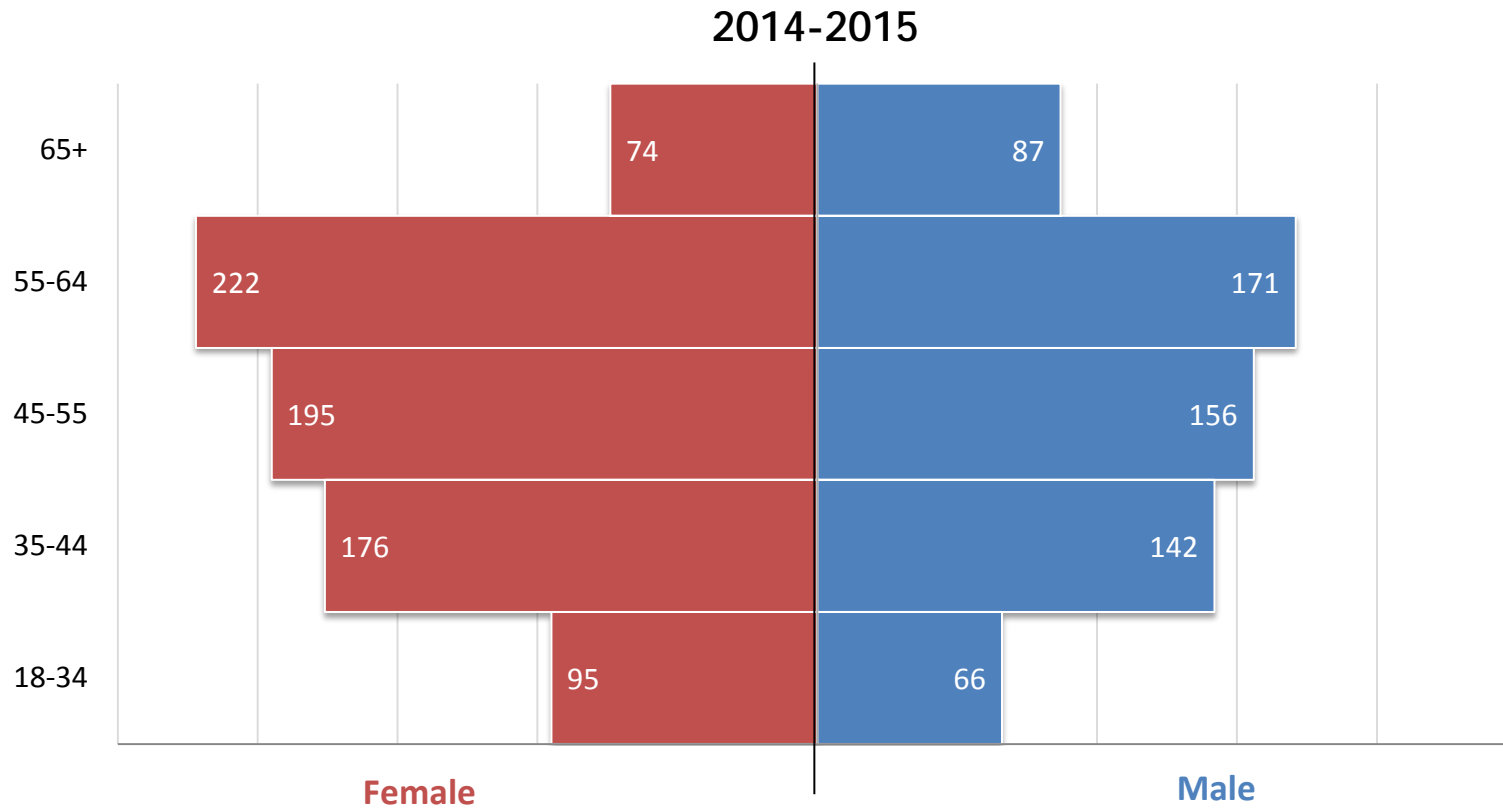
2014-2015



	2010-11	2011-12	2012-13	2013-14	2014-15
Female	722	723	729	759	762
Male	585	600	552	597	622
<i>Total</i>	<i>1,307</i>	<i>1,323</i>	<i>1,281</i>	<i>1,356</i>	<i>1,384</i>

# Employee – Gender by Age

Employee demographic data represent Fall profiles

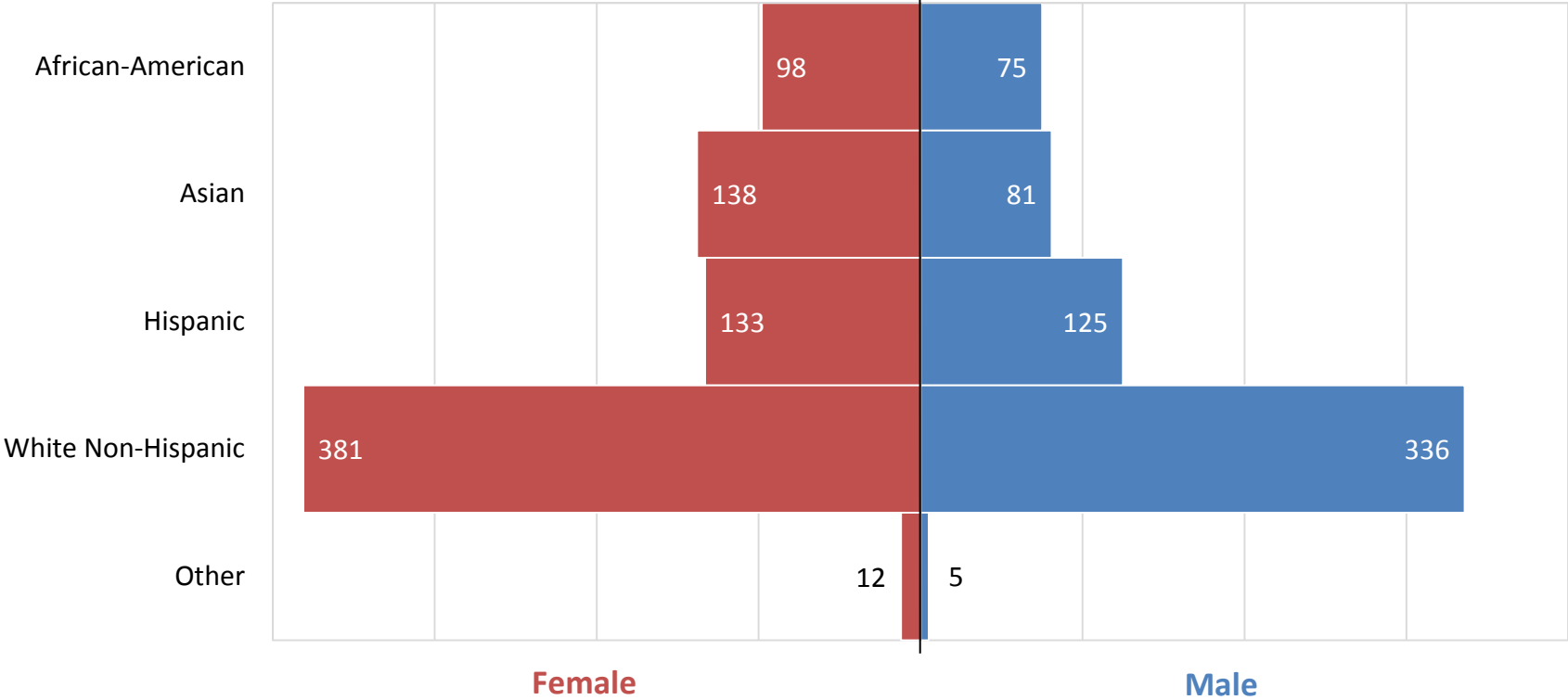


	18-34	35-44	45-54	55-64	65+
Female	59%	55%	56%	56%	46%
Male	41%	45%	44%	44%	54%

# Employee – Gender by Ethnicity

Employee demographic data represent Fall profiles

2014-2015



	African-American	Asian	Latino	White	Other
Female	57%	63%	52%	53%	71%
Male	43%	37%	48%	47%	29%

Other Includes: American Indian or Alaskan Native, Pacific Islander, Two or More Races, and Unknown