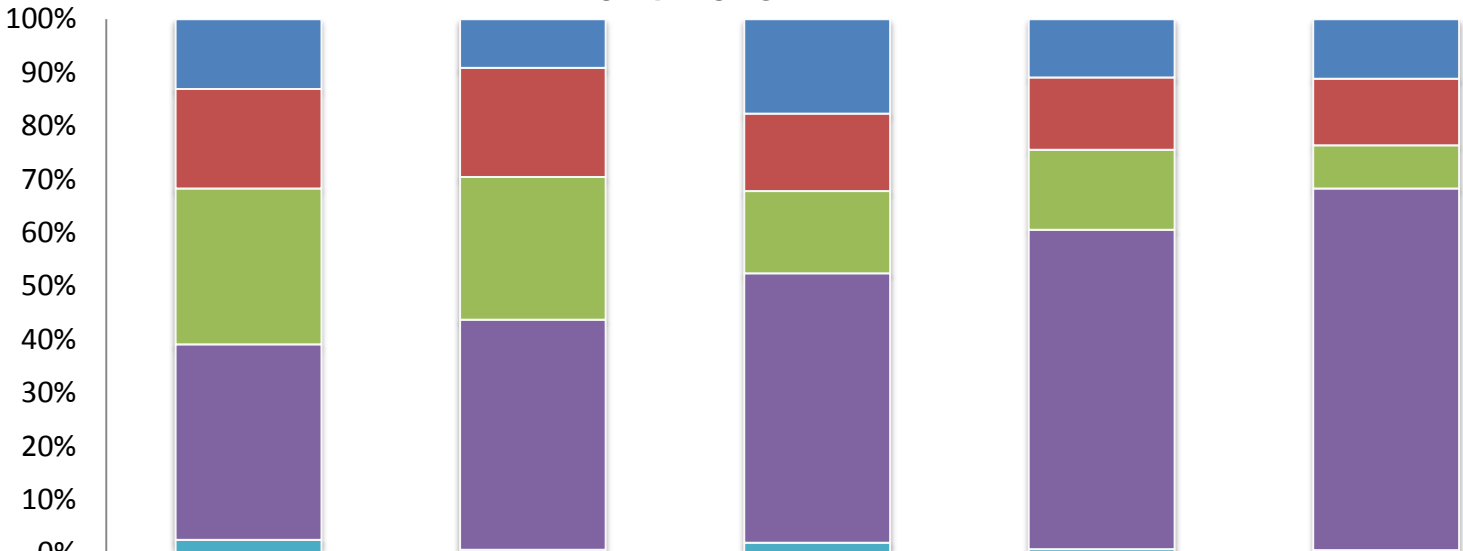


# Employee – Age by Ethnicity

Employee demographic data represent Fall profiles

2014-2015



|                  | 18 to 34 | 35 - 44 | 45 - 54 | 55-64 | 65+ |
|------------------|----------|---------|---------|-------|-----|
| African-American | 13%      | 9%      | 18%     | 11%   | 11% |
| Asian            | 19%      | 20%     | 15%     | 13%   | 12% |
| Latino           | 29%      | 27%     | 15%     | 15%   | 8%  |
| White            | 37%      | 43%     | 50%     | 60%   | 68% |
| Other            | 2%       | 1%      | 2%      | 1%    | 1%  |

|                  | 18 to 34   | 35 - 44    | 45 - 54    | 55-64      | 65+        |
|------------------|------------|------------|------------|------------|------------|
| African-American | 21         | 29         | 62         | 43         | 18         |
| Asian            | 30         | 65         | 51         | 53         | 20         |
| Latino           | 47         | 85         | 54         | 59         | 13         |
| White            | 59         | 137        | 177        | 235        | 109        |
| Other            | 4          | 2          | 7          | 3          | 1          |
| <b>Total</b>     | <b>161</b> | <b>318</b> | <b>351</b> | <b>393</b> | <b>161</b> |

Other Includes: American Indian or Alaskan Native, Pacific Islander, Two or More Races, and Unknown