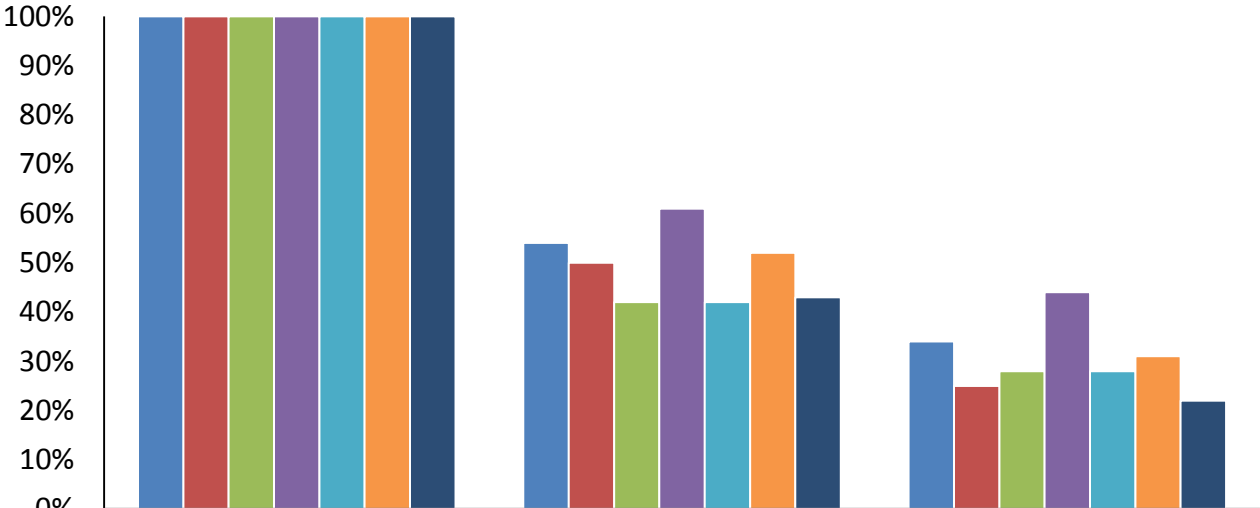


# Persistence by Ethnicity

**Student Persistence Over Three Semesters by Ethnicity  
Fall 2015 Students**



	1st Semester	2nd Semester	3rd Semester
■ African-American	100%	54%	34%
■ Amer. Ind/Alask. Native	100%	50%	25%
■ Asian	100%	42%	28%
■ Latino	100%	61%	44%
■ Pacific Islander	100%	42%	28%
■ Two or More	100%	52%	31%
■ White	100%	43%	22%