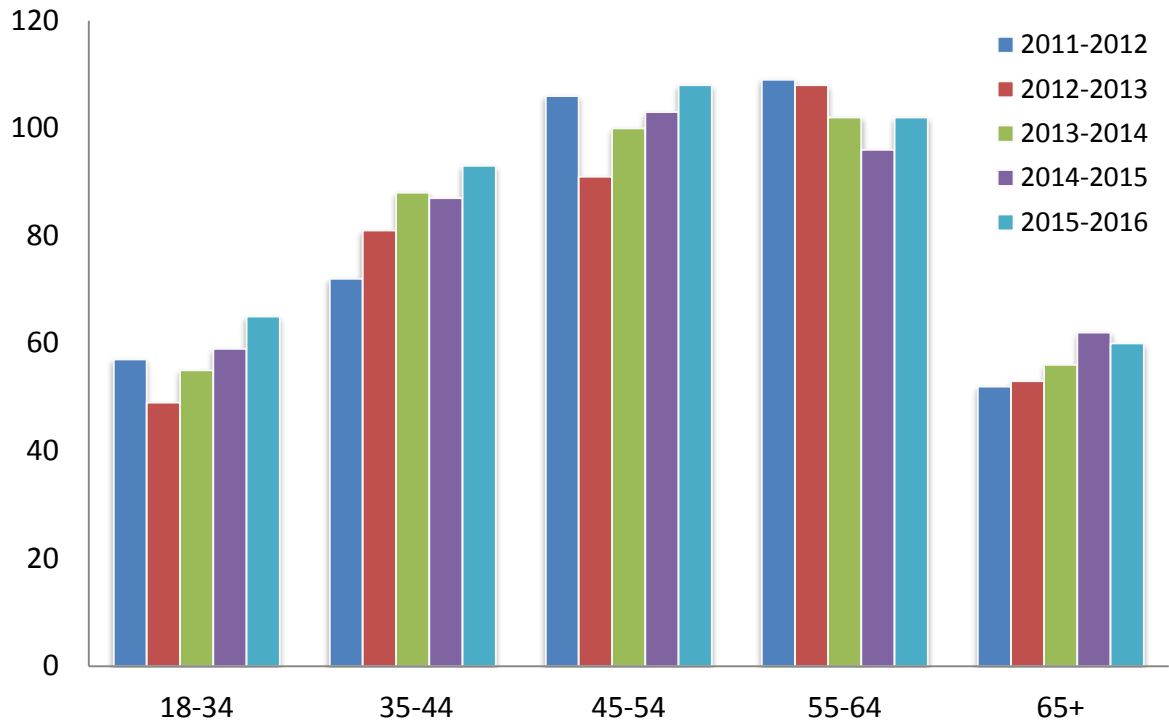
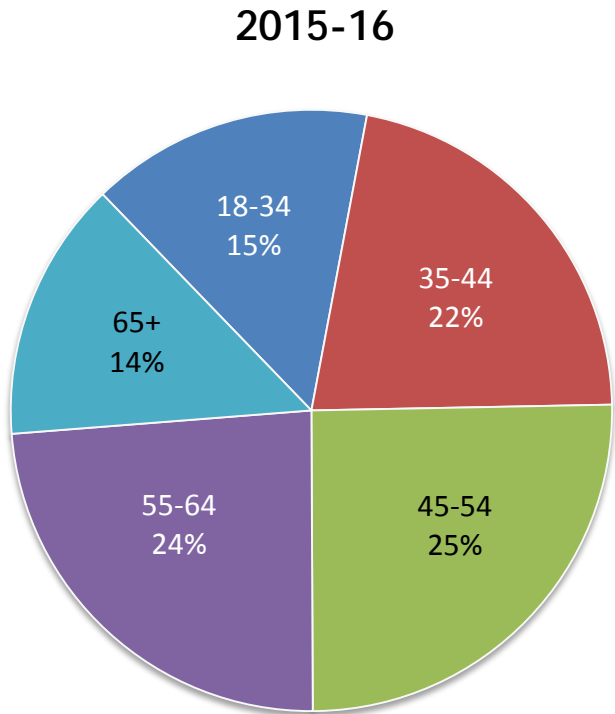


Employee by Age

Employee demographic data represent Fall profiles



	2011-12	2012-13	2013-14	2014-15	2015-16
18-34	57	49	55	59	65
35-44	72	81	88	87	93
45-54	106	91	100	103	108
55-64	109	108	102	96	102
65+	52	53	56	62	60
Total	396	382	401	407	428