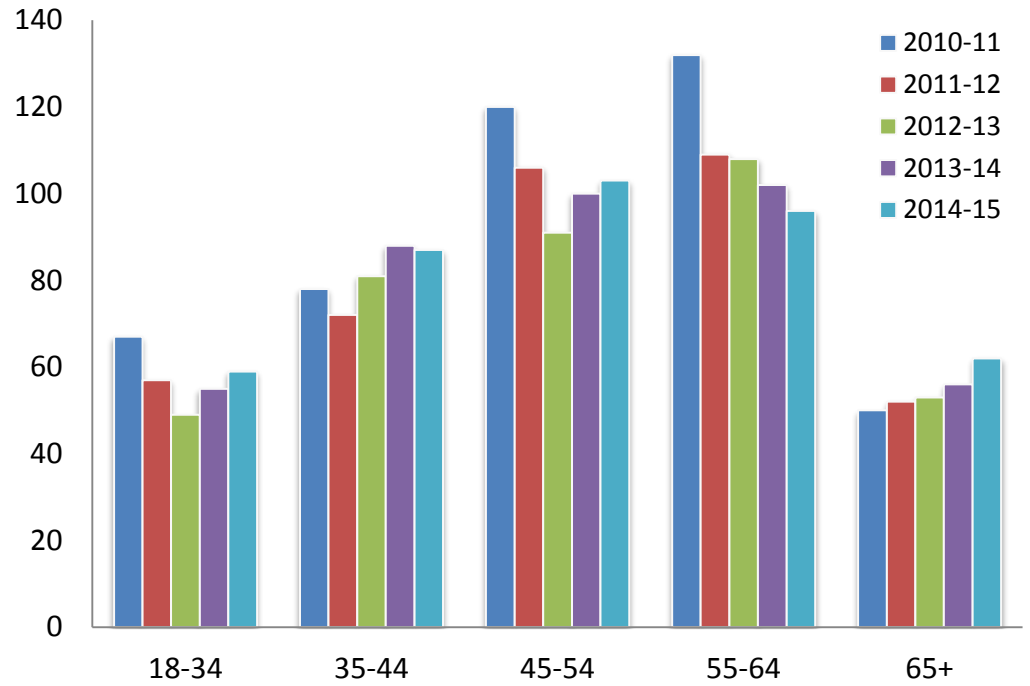
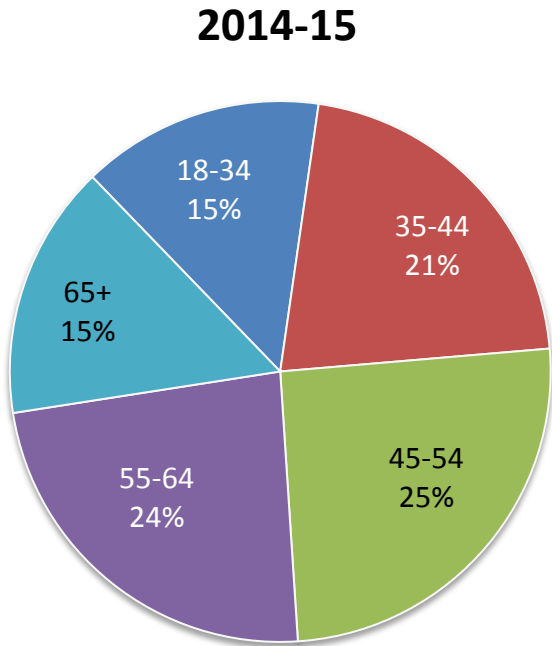


# Employee by Age

Employee demographic data represent Fall profiles



	2010-11	2011-12	2012-13	2013-14	2014-15
18-34	67	57	49	55	59
35-44	78	72	81	88	87
45-54	120	106	91	100	103
55-64	132	109	108	102	96
65+	50	52	53	56	62
<b>Total</b>	<b>447</b>	<b>396</b>	<b>382</b>	<b>401</b>	<b>407</b>