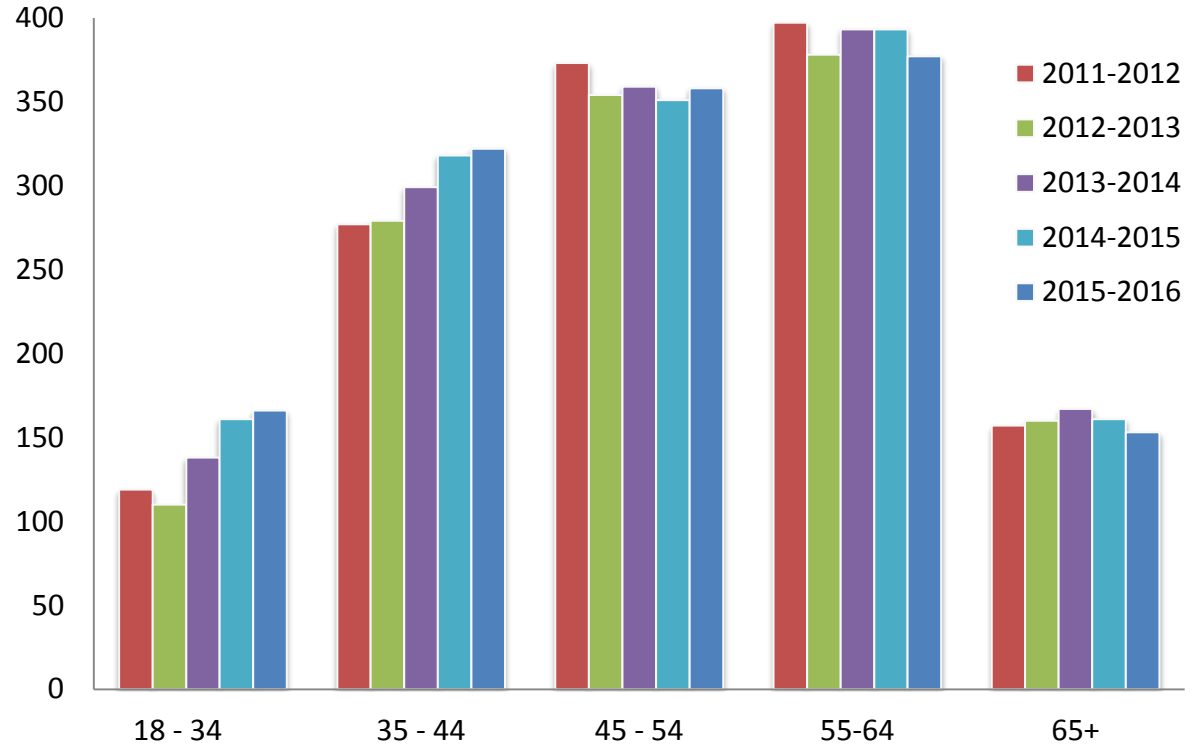
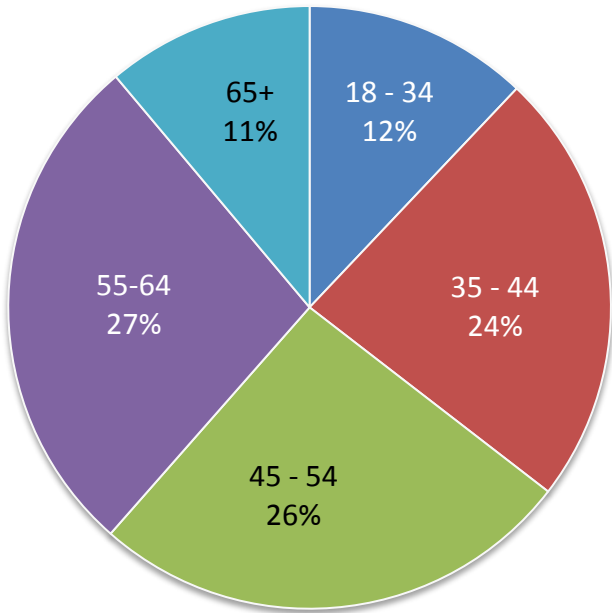


# Employee by Age

Employee demographic data represent Fall profiles

**2015-2016**



	2011-12	2012-13	2013-14	2014-15	2015-16
<b>18-34</b>	119	110	138	161	166
<b>35-44</b>	277	279	299	318	322
<b>45-54</b>	373	354	359	351	358
<b>55-64</b>	397	378	393	393	377
<b>65+</b>	157	160	167	161	153
<b>Total</b>	<i>1,323</i>	<i>1,281</i>	<i>1,356</i>	<i>1,384</i>	<i>1,376</i>