



**Academic Performance Profile
Fall 2005**

**El Camino College
and
Peer Institutions**

**Irene Graff
Institutional Research
El Camino College
August 29, 2006**

Introduction

The following report profiles El Camino College on several academic performance measures compared with 5 other California community colleges that are similar in size, composition, and regional setting. These institutions are:

- Cerritos College (Cerritos)
- Long Beach City College (LBCC)
- Mt. San Antonio College (Mt. SAC)
- Pasadena City College (PCC)
- Santa Monica College (SMC)

These colleges are all large, urban/suburban, ethnically diverse, and in single-college districts. They represent our core peer group in Southern California.

The academic performance measures provided in this report include the following:

- Course Retention and Success
- One Year Persistence
- Completions (degrees or transfer-preparedness)
- Transfers to UC/CSUs
- Degrees Conferred at UC/CSUs

The report begins with enrollment trend information to serve as a backdrop for the academic measures. El Camino College is highlighted in blue in each table and represents the magenta squares in each graph. The sources of data are the federal Integrated Postsecondary Education Data System (IPEDS) and the California Postsecondary Education Commission (CPEC).

Executive Summary

The academic performance of El Camino College students compared with those of its closest peers is fairly consistent and central. On most measures, ECC students tended to perform better than Long Beach City College and Cerritos College and not as well as the other three. Exceptions to this general observation include **one year persistence**, where ECC consistently rates towards the top and degree/transfer “**completion rate**,” where ECC ranks third (above Santa Monica). ECC also ranks third in the rate of UC transfers, with Mt. SAC very close behind. The area where ECC performs the lowest is under course success—ECC success and retention rates are second from the bottom.

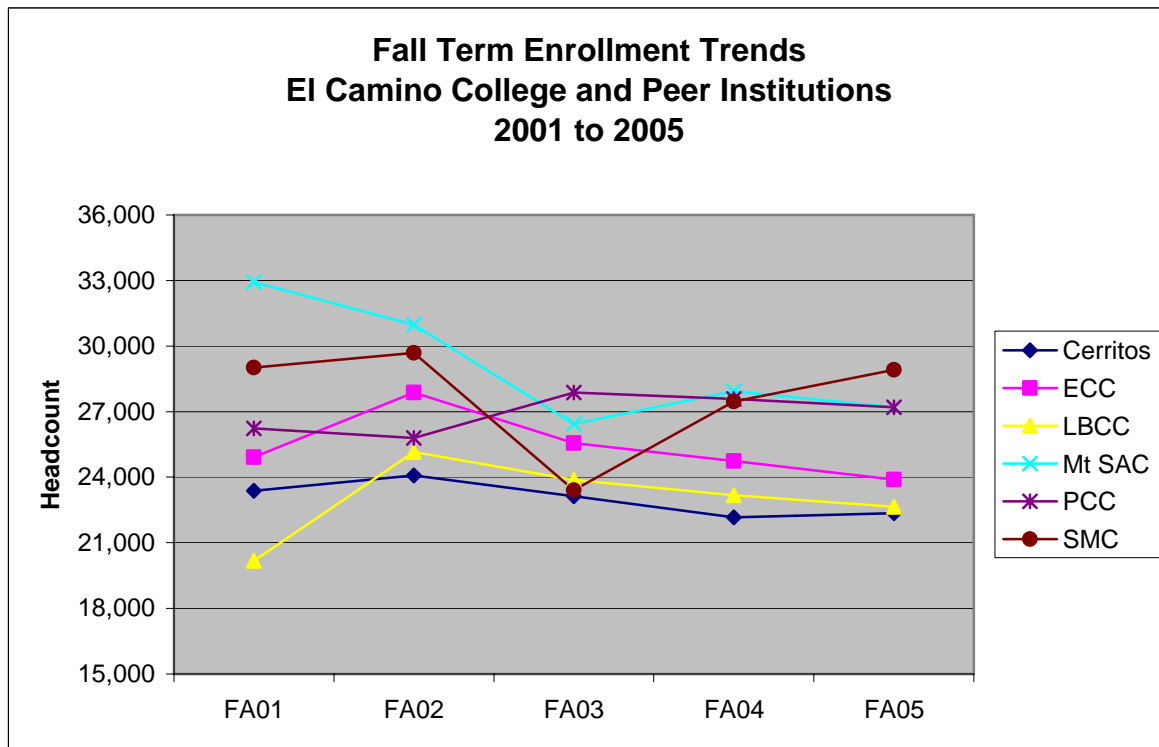
Enrollment Profile

Most colleges in our group have experienced a decline in headcount enrollment since Fall 2001, with the exception of Pasadena and Long Beach (whose enrollment was unusually low in 2001). El Camino College enrollments tended to fall in the middle of the core group throughout the past 5 years.

Enrollment Trends (Headcount) Fall 2001 to Fall 2005

Institution	FA01	FA02	FA03	FA04	FA05
Cerritos College	23,371	24,081	23,129	22,155	22,349
<i>El Camino College</i>	<i>24,917</i>	<i>27,876</i>	<i>25,563</i>	<i>24,732</i>	<i>23,895</i>
Long Beach City College	20,169	25,142	23,877	23,177	22,641
Mt San Antonio College	32,927	30,974	26,440	27,927	27,195
Pasadena City College	26,227	25,798	27,876	27,584	27,199
Santa Monica College	29,010	29,691	23,401	27,459	28,908

Source: IPEDS.



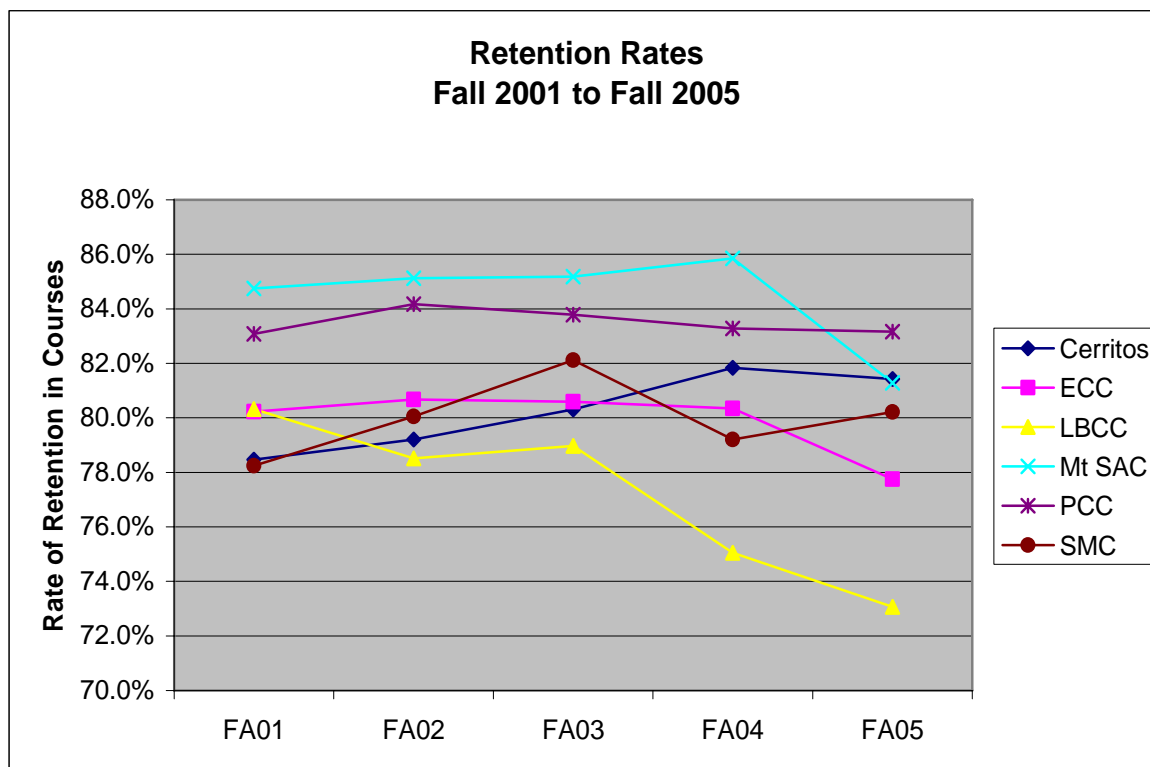
Retention & Success in Courses

Rates over the past 5 years show that half the group declined in *retention* (including ECC) while two others half increased modestly (Cerritos and Santa Monica). All *success* rates declined with the exception of Cerritos and Santa Monica who each climbed then dropped back to 2001 levels. Long Beach experienced the most dramatic decline.

Retention Rates Fall 2001 to Fall 2005

Institution	FA01	FA02	FA03	FA04	FA05
Cerritos College	78.5%	79.2%	80.3%	81.8%	81.4%
<i>El Camino College</i>	<i>80.2%</i>	<i>80.7%</i>	<i>80.6%</i>	<i>80.3%</i>	<i>77.8%</i>
Long Beach City College	80.3%	78.5%	79.0%	75.1%	73.1%
Mt. San Antonio College	84.8%	85.1%	85.2%	85.9%	81.3%
Pasadena City College	83.1%	84.2%	83.8%	83.3%	83.2%
Santa Monica College	78.2%	80.1%	82.1%	79.2%	80.2%

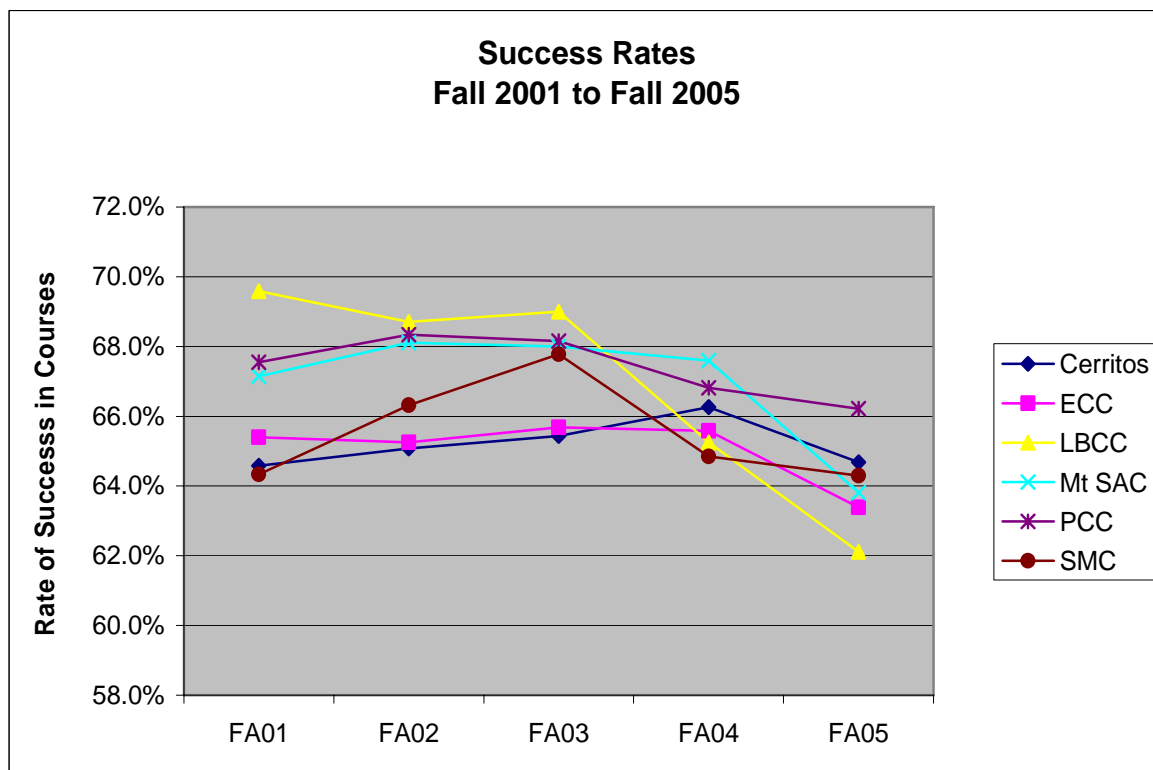
Source: IPEDS.



Success Rates
Fall 2001 to Fall 2005

Institution	FA01	FA02	FA03	FA04	FA05
Cerritos College	64.6%	65.1%	65.4%	66.3%	64.7%
<i>El Camino College</i>	<i>65.4%</i>	<i>65.3%</i>	<i>65.7%</i>	<i>65.6%</i>	<i>63.4%</i>
Long Beach City College	69.6%	68.7%	69.0%	65.3%	62.1%
Mt. San Antonio College	67.1%	68.1%	68.0%	67.6%	63.8%
Pasadena City College	67.6%	68.3%	68.2%	66.8%	66.2%
Santa Monica College	64.3%	66.3%	67.8%	64.9%	64.3%

Source: IPEDS.



One Year Persistence

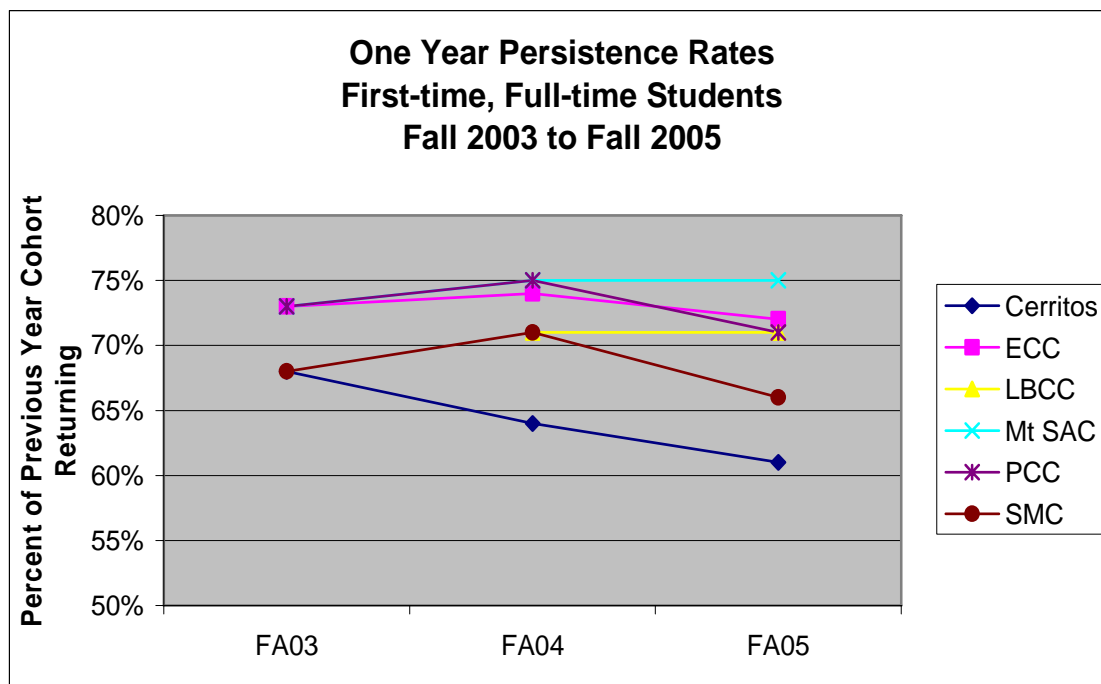
The one year persistence rate is the percentage of fall term first time, full-time degree, certificate or transfer-oriented students who enroll in classes the subsequent fall term. Data from IPEDS is available for only 3 years of our study.

El Camino College ranks second behind Mt. San Antonio College in one year persistence rate in 2005. Cerritos and SMC declined over the past 3 years.

**One Year Persistence Rates
First time, Full-time Students
Fall 2003 to Fall 2005**

Institution	FA03	FA04	FA05
Cerritos College	68%	64%	61%
<i>El Camino College</i>	<i>73%</i>	<i>74%</i>	<i>72%</i>
Long Beach City College		71%	71%
Mt San Antonio College	73%	75%	75%
Pasadena City College	73%	75%	71%
Santa Monica College	68%	71%	66%

Source: IPEDS.



Completions and Transfers Out

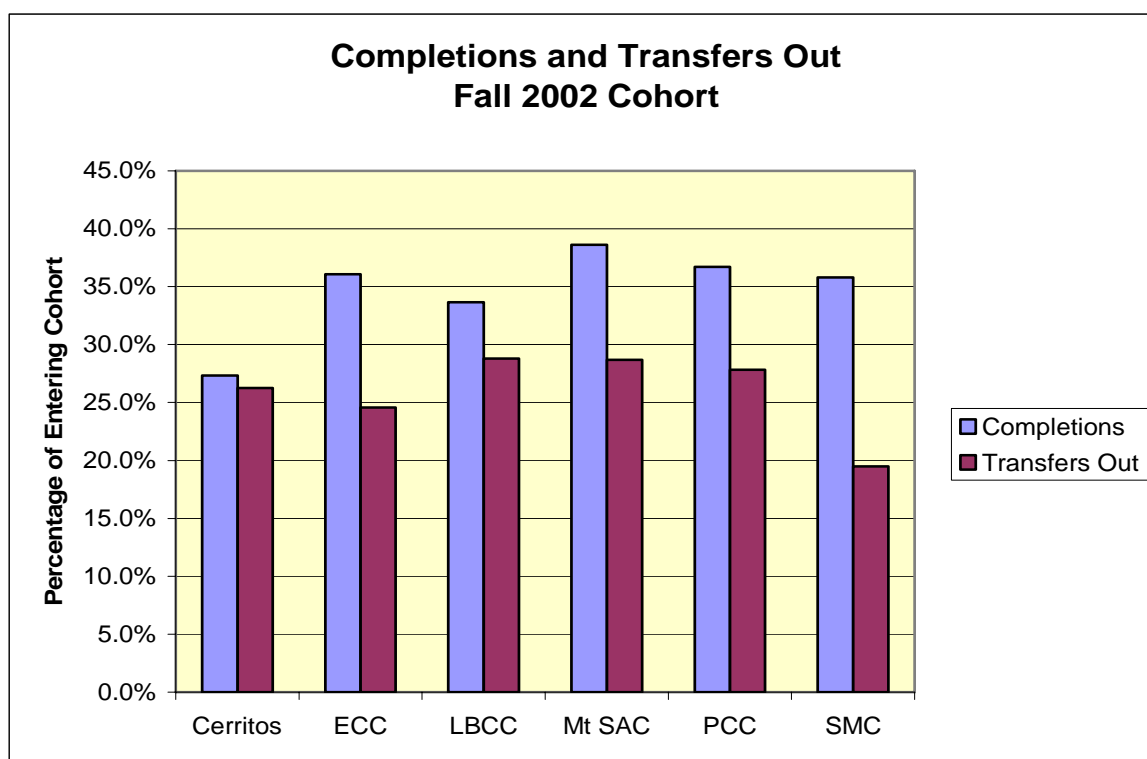
A “completer” is a student who entered college on full-time status with a goal to receive a degree, certificate or transfer to a 4-year institution *and* who met this goal within 3 years of initial enrollment. A student who “transfers out” is one who transferred to another college or university before meeting their goal. While a high percentage of *completers* is desirable for students, a low percentage of *transfers out* is preferable.

The table below calculates the completion rate based on the size of the Fall 2002 cohort and the number of these students who met their goal by spring 2005. El Camino College ranks third in completion rate and second in transfers out behind Santa Monica.

**Completions and Transfers Out (by 2005)
Fall 2002 First time, Full-Time Students**

Institution Name	Entering Cohort (N)	Completers			Transfers Out	
		N	%	Rank	N	%
Cerritos College	377	103	27.3%	6	99	26.3%
<i>El Camino College</i>	<i>521</i>	<i>188</i>	<i>36.1%</i>	<i>3</i>	<i>128</i>	<i>24.6%</i>
Long Beach City College	309	104	33.7%	5	89	28.8%
Mt San Antonio College	453	175	38.6%	1	130	28.7%
Pasadena City College	787	289	36.7%	2	219	27.8%
Santa Monica College	821	294	35.8%	4	160	19.5%

Source: IPEDS.



Transfer Destinations

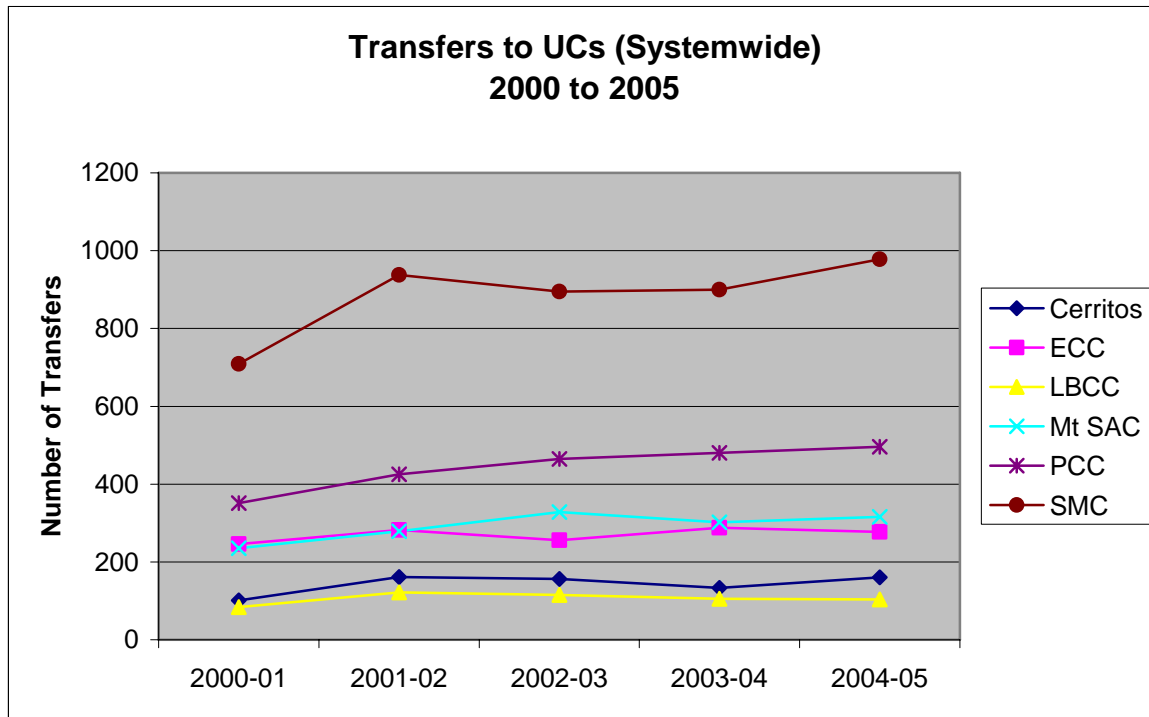
Transfer destinations are tracked where possible by the California Postsecondary Education Commission (CPEC). This section lists the transfer numbers to both the UC and CSU systems. Specific universities are provided in the Degrees section of this report. Private university destinations were not yet reliably available from CPEC.

El Camino College ranked variably third or fourth in numbers of transfers to UCs and fourth in transfers to CSUs. CPEC data provides counts only so it is difficult to judge the *rate* of transfer (transfers as a percentage of a beginning cohort). ECC tends to transfer a higher percentage of students compared with peer colleges than the raw numbers suggest (see “Degrees” below).

**Transfers to All UCs (Systemwide)
2000-01 to 2004-05**

Source Institution	2000-01	2001-02	2002-03	2003-04	2004-05
Cerritos College	101	161	156	133	160
<i>El Camino College</i>	<i>246</i>	<i>282</i>	<i>256</i>	<i>288</i>	<i>277</i>
Long Beach City College	84	122	115	105	104
Mt. San Antonio College	235	279	328	302	316
Pasadena City College	351	425	465	480	496
Santa Monica College	709	938	895	900	978

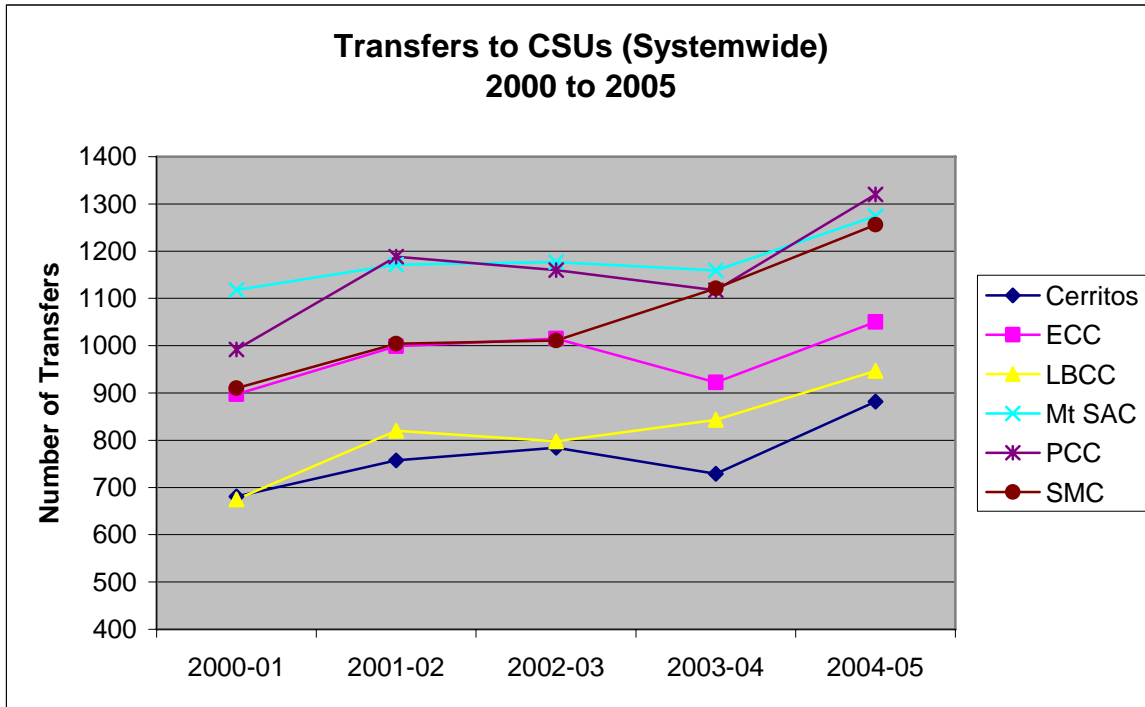
Source: CPEC.



**Transfers to All CSUs (Systemwide)
2000-01 to 2004-05**

Source Institution	2000-01	2001-02	2002-03	2003-04	2004-05
Cerritos College	681	757	784	729	882
<i>El Camino College</i>	<i>897</i>	<i>999</i>	<i>1,015</i>	<i>922</i>	<i>1,050</i>
Long Beach City College	675	820	798	843	947
Mt. San Antonio College	1,118	1,171	1,177	1,159	1,274
Pasadena City College	992	1,188	1,160	1,117	1,320
Santa Monica College	910	1,004	1,011	1,121	1,256

Source: CPEC.



Four-Year Degree Completion

CPEC also provides information on degrees received based on source college and destination university. The first table below provides a count of degrees for all UCs. The second table lists only CSUs in Los Angeles and surrounding regions for simplicity. Each table contains the 4-year degree completion rate based on a hypothetical entering cohort of Fall 2000 (assuming a 5-year graduate rate). Degrees may actually be from a number of college starting classes.

Again, El Camino College is in the middle in terms of UC degrees received. The largest count by far for all the peer group colleges is UCLA, followed by Irvine.

The top receiving CSU for the peer group is Long Beach State followed by Northridge (CSUN), Fullerton, and Pomona. In 2005, both Dominguez Hills and Long Beach graduated the same number of El Camino College students.

Degrees Received at University of California (UC) Institutions—Statewide Students Transferring from Peer Group Community Colleges Degrees conferred: 2005

Source Institution	Brkly	Davis	Irvine	LA	Rvrsd	SD	SB	SC	Total	% FA00
Cerritos College	14	4	48	51	6	9	3	1	136	0.6%
<i>El Camino College</i>	<i>36</i>	<i>4</i>	<i>56</i>	<i>138</i>	<i>19</i>	<i>26</i>	<i>17</i>	<i>7</i>	<i>303</i>	<i>1.1%</i>
Long Beach City College	8	2	21	47	8	5	12	6	109	0.4%
Mt. San Antonio College	40	5	69	96	62	37	14	4	327	1.1%
Pasadena City College	38	10	86	201	45	45	31	8	464	1.8%
Santa Monica College	117	11	111	535	36	62	46	25	943	3.2%

Source: CPEC.

**Degrees Received at California State University (CSU) Institutions
Students Transferring from Los Angeles Area Peer Group Community Colleges
Degrees conferred: 2005**

Source Institution	DH	Full	LA	LB	CSUN	Pom	SLO	Total	% FA00
Cerritos College	106	133	43	234	5	24	1	546	2.3%
<i>El Camino College</i>	<i>294</i>	<i>30</i>	<i>32</i>	<i>294</i>	<i>26</i>	<i>22</i>	<i>4</i>	<i>702</i>	<i>2.5%</i>
Long Beach City College	109	64	16	336	6	11	2	544	2.2%
Mt. San Antonio College	11	340	62	45	24	355	4	841	2.7%
Pasadena City College	11	49	287	72	152	187	7	765	3.0%
Santa Monica College	58	9	77	122	463	27	4	760	2.6%

Source: CPEC.

Data Sources

The data sources used for this report are web-accessible and available to the public. Compiled by the National Center for Educational Statistics (NCES), IPEDS data contains a variety of demographic, enrollment, performance and staffing data on US institutions of higher education. With the Peer Analysis System (PAS), users can create a peer group of institutions and produce data on any data element for each member of the group. A password is required to use PAS—contain Institutional Research for more information. Alternatively, another version of PAS is available without a password called Executive Peer Tool. For a quick profile of any college or university, IPEDS now has COOL (College Opportunities Online Locator), useful for getting a quick overview of an institution and comparison across schools.

The CPEC website also has a wealth of information on high school graduates, and college and university destinations. Automatic as well as customizable data downloads and reports are available.

Links for all of these features are below:

IPEDS Main Page

<http://nces.ed.gov/ipeds/>

IPEDS PAS

<http://nces.ed.gov/ipedspas/>

IPEDS Executive Peer Tool

<http://nces.ed.gov/ipedspas/Expt/>

IPEDS COOL

<http://nces.ed.gov/ipeds/cool/>

CPEC On-line Data

<http://www.cpec.ca.gov/SecondPages/Data.asp>