



[Compton College \(/\)](#) / [Student Services \(/studentservices/\)](#) / [Support Services \(/studentservices/supportservices/\)](#) / [Counseling](#)

WELCOME TO THE COUNSELING DEPARTMENT

Mission Statement

The Compton College Counseling Department is a guiding force for our diverse student population on their path to completion and pursuit of success. We promote an inclusive environment where students can explore, identify, and achieve their academic, career, and personal goals.



VIRTUAL COUNSELING DROP-IN
([HTTPS://COMPTON.CRANIUMCAFE.COM](https://compton.craniumcafe.com/group/counseling/lobby)
[/GROUP/COUNSELING/LOBBY](https://compton.craniumcafe.com/group/counseling/lobby))

COUNSELING APPOINTMENTS
([HTTPS://COMPTON.CRANIUMCAFE.COM](https://compton.craniumcafe.com/group/counseling/scheduler)
[/GROUP/COUNSELING/SCHEDULER](https://compton.craniumcafe.com/group/counseling/scheduler))

TRANSFER & CAREER COUNSELING APPOINTMENTS

([HTTPS://COMPTON.CRANIUMCAFE.COM/GROUP](https://compton.craniumcafe.com/group/transfer-and-career-center/scheduler)
[/TRANSFER-AND-CAREER-CENTER/SCHEDULER](https://compton.craniumcafe.com/group/transfer-and-career-center/scheduler))

If you are experiencing any issues and need to connect a support member, please click [here \(https://forms.office.com/Pages/ResponsePage.aspx?id=hGohMmQr7UGOsQunCaFwe5M6NCKXNMouGpY5oWGzpUMEdORkhHMkgUM1BWOTHLr1ZWQTZSMoILRy4u\)](https://forms.office.com/Pages/ResponsePage.aspx?id=hGohMmQr7UGOsQunCaFwe5M6NCKXNMouGpY5oWGzpUMEdORkhHMkgUM1BWOTHLr1ZWQTZSMoILRy4u) and complete the Counseling Department Support Form. Once you complete the form, a member from the Counseling Department will contact you during the hours of operation.

NEED HELP SCHEDULING AN APPOINTMENT? CALL US OR TEXT US

	Monday	Tuesday	Wednesday	Thursday	Friday
Phone Call	8:00 a.m. - 4:30 p.m. (323) 457-4373	10:00 a.m. - 3:00 p.m. (213) 986-7027	8:00 a.m. - 6:30 p.m. (424) 757-4628	10:00 a.m. - 3:00 p.m. (213) 986-7027	8:00 a.m. - 12:00 p.m. (323) 457-4373

Due to COVID-19, the Counseling Department has transitioned to serving students in a virtual environment. Counselors will assist you via telephone, email, online chat, and video appointments. We thank you for your patience during this transition. We are committed to helping you achieve your goals and navigate the college experience. Thank you for choosing Compton College, where every student is a success story!

In appreciation,

Dr. Cesar Jimenez

Dean of Counseling and Guided Pathways
310-900-1600, ext. 2084
Administration Building, Office A

 (<https://www.facebook.com/comptonedu>)
  (https://twitter.com/compton_college)
  (https://www.instagram.com/compton_college/)
  (<https://www.youtube.com/channel/UCd4v1ThUsDIYEH6zgTUaIQ>)
  (<https://www.flickr.com/photos/comptonedu/albums>)



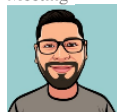
Offline

Nathalie Sevilla

Title: Sr. Administrative Assistant
Phone: +13234574373
Email: nsevilla@compton.edu

Send Offline Message

Schedule Meeting



Offline

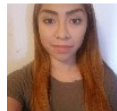
Cesar Jimenez

Title: Dean
Counseling and Guided Pathways
Email: cjimenez@compton.edu

Hablo Español

click to read bio
Send Offline Message

Schedule Meeting



Offline

Tiffany De Jesus

Title: Student Worker
Phone: +12139867027
Email: tdejesus1@compton.edu

Send Offline Message

Schedule Meeting



Offline

Ariana Atienza**COUNSELING DEPARTMENT SPRING 2021 HOURS**

Compton College will be a telecommuting campus until further notice. During this time, the campus will be closed. However, we will still be assisting students online. For more information regarding the Novel Coronavirus 2019, please click [here \(/adminandoperations/campuspolice/covid-19.aspx\)](#).

Spring 2021 Office Hours (March 1 - June 11)				
Monday	Tuesday	Wednesday	Thursday	Friday
8:00 a.m. - 4:30 p.m.	8:00 a.m. - 4:30 p.m.	8:00 a.m. - 6:30 p.m.	8:00 a.m. - 4:30 p.m.	8:00 a.m. - 12:00 p.m.

COUNSELING DEPARTMENT CONTACT INFORMATION

INFORMATION

[About Us \(/campusinformation/index.aspx\)](/campusinformation/index.aspx)
[Accreditation \(/campusinformation/accreditation/\)](/campusinformation/accreditation/)
[Administration \(/adminandoperations/\)](/adminandoperations/)
[Employment Opportunities \(/district/administration/human-resources/index.aspx\)](/district/administration/human-resources/index.aspx)
[Compton College Transition \(/campusinformation/accreditation/transition/\)](/campusinformation/accreditation/transition/)
[Compton Community College District \(/district/\)](/district/)

STUDENT RESOURCES

[AB 540 and Undocumented Students \(/studentservices/financialaid/ab540/\)](/studentservices/financialaid/ab540/)
[Bookstore \(/studentservices/supportservices/bookstore/\)](/studentservices/supportservices/bookstore/)
[Bursar's Office \(/studentservices/bursars.aspx\)](/studentservices/bursars.aspx)
[Distance Education/Online Learning \(/academics/distance-ed/\)](/academics/distance-ed/)
[Financial Aid \(/studentservices/financialaid/\)](/studentservices/financialaid/)
[Library-Student Success Center \(/library/\)](/library/)
[Student Services \(/studentservices/\)](/studentservices/)

EVENTS & VISITING

[Calendar of Events \(/events/\)](/events/)
[Campus Map \(/campusinformation/CampusMap.aspx\)](/campusinformation/CampusMap.aspx)
[Campus Safety \(/adminandoperations/campuspolice/\)](/adminandoperations/campuspolice/)
[Directions \(/campusinformation/DrivingDirections.aspx\)](/campusinformation/DrivingDirections.aspx)
[Parking \(/campusinformation/ParkingInformation.aspx\)](/campusinformation/ParkingInformation.aspx)
[Contact \(/campusinformation/ContactUs.aspx\)](/campusinformation/ContactUs.aspx)

Compton College

1111 E. Artesia Boulevard
Compton, CA 90221
(310) 900-1600

Select Language ▼

<https://www.facebook.com/comptonedu>

https://twitter.com/compton_college/

https://www.instagram.com/compton_college/

<https://www.flickr.com/photos/comptonedu>

[/albums\) https://www.youtube.com/channel/UCd4v1ThUsDIYeh6zgTUaolQ](https://www.youtube.com/channel/UCd4v1ThUsDIYeh6zgTUaolQ)

Copyright © <https://a.cms.omniupdate.com/11/?skin-oucampus&account-compton&site-www&action-de&path-/studentservices/supportservices/counseling/index.pcf> 2019 Compton College | [Web Site](#)
[Disclaimer \(/disclaimer.aspx\)](/disclaimer.aspx)