



**PROGRAM PLAN FOR  
 EXTENDED OPPORTUNITY PROGRAMS AND SERVICES  
 2016-17**

**Email 1 Signed COPY to [ssarcc-eops@cccco.edu](mailto:ssarcc-eops@cccco.edu)**

**PART 1**

**1.1 College:** El Camino College Compton Center  
**Address:** 1111 East Artesia Blvd, Compton, CA 90221-5393

**1.2 EOPS Minimum Program Standards/Activities and Waiver Requests**

Colleges are required to employ a full-time EOPS Director. A waiver for less than a full-time EOPS director may be requested if the college meets the waiver criteria. Please check the appropriate box below to indicate the status of the EOPS Director. (The waiver criteria is further clarified in the *Instructions for Completing the Program Plan* on page 14)

Full-Time EOPS Director

Part-time Director

The college is requesting a waiver for a full-time director based on **one of the two** criteria below:

Served less than 500 EOPS students and received an EOPS allocation of less than \$500,000 in the prior fiscal year.

Has a full-time Assistant Director/Coordinator assigned 100% to EOPS/CARE; if part-time Director is assigned less than 50% to EOPS/CARE, then Assistant Director/Coordinator must be certificated.

The college EOPS program is required to provide the following services. If the service is provided by the college and meets the needs of the EOPS students and program, the college may request a waiver. Please check the appropriate boxes below to indicate the service is provided by the EOPS program or that the college is requesting a waiver. (The waiver criteria is further clarified in the *Instructions for Completing the Program Plan* on page14.)

Provided by EOPS

\
\
\
\

Waiver requested; provided by college

\
<b>NA*</b>
\
\
\

- EOPS Recruitment/Outreach Services
- EOPS Orientation Services
- EOPS Priority Registration Services
- Testing/Assessment Services
- Counseling and Advisement Services
- EOPS Basic Skills Instructional Services
- EOPS Tutoring Services
- EOPS Transfer Services
- EOPS Career Employment Services

**\* no waiver allowed**

**1.3 Other Activities and Services**


<input checked="" type="checkbox"/>	CARE Program
<input checked="" type="checkbox"/>	EOPS Advisory Committee
<input type="checkbox"/>	Other (please specify): _____

- 1.4 EOPS Allocation for 2016-17:** \$ 1,216.287
- Proposed District Contribution for 2016-17:** \$ 204,437 \*
- (\*This figure should match planned district required match in SSARCC)
- Proposed District Backfill funds for 2016-17 (if known):** \$ \_\_\_\_\_
- Proposed "flexible" categorical funds for 2016-17 (if known):** \$ \_\_\_\_\_
- Number of EOPS students planned to be served in 2016-17:** 1,200

**1.5 Signature of College EOPS Director**

Print Name: Christine Aldrich Phone #: +1 (310) 900-2917

Title: EOPS/CARE Director

Signature:  Date: 11/1/16

**1.6 Signature of Administrator responsible for the supervision of the EOPS Director**

Print Name: Elizabeth Martinez

Title: Interim Dean of Student Services

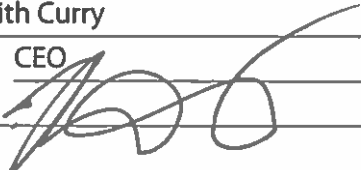
Signature:  Date: 11/2/16

- 1.7 I certify, on behalf of the Board of Trustees,** that funds requested herein will be expended in accordance with the provisions of Chapter 2.5 (commencing with Section 56200) of Division 7 of Part 6 of Title 5 of the *California Code of Regulations*.

**Superintendent/President**

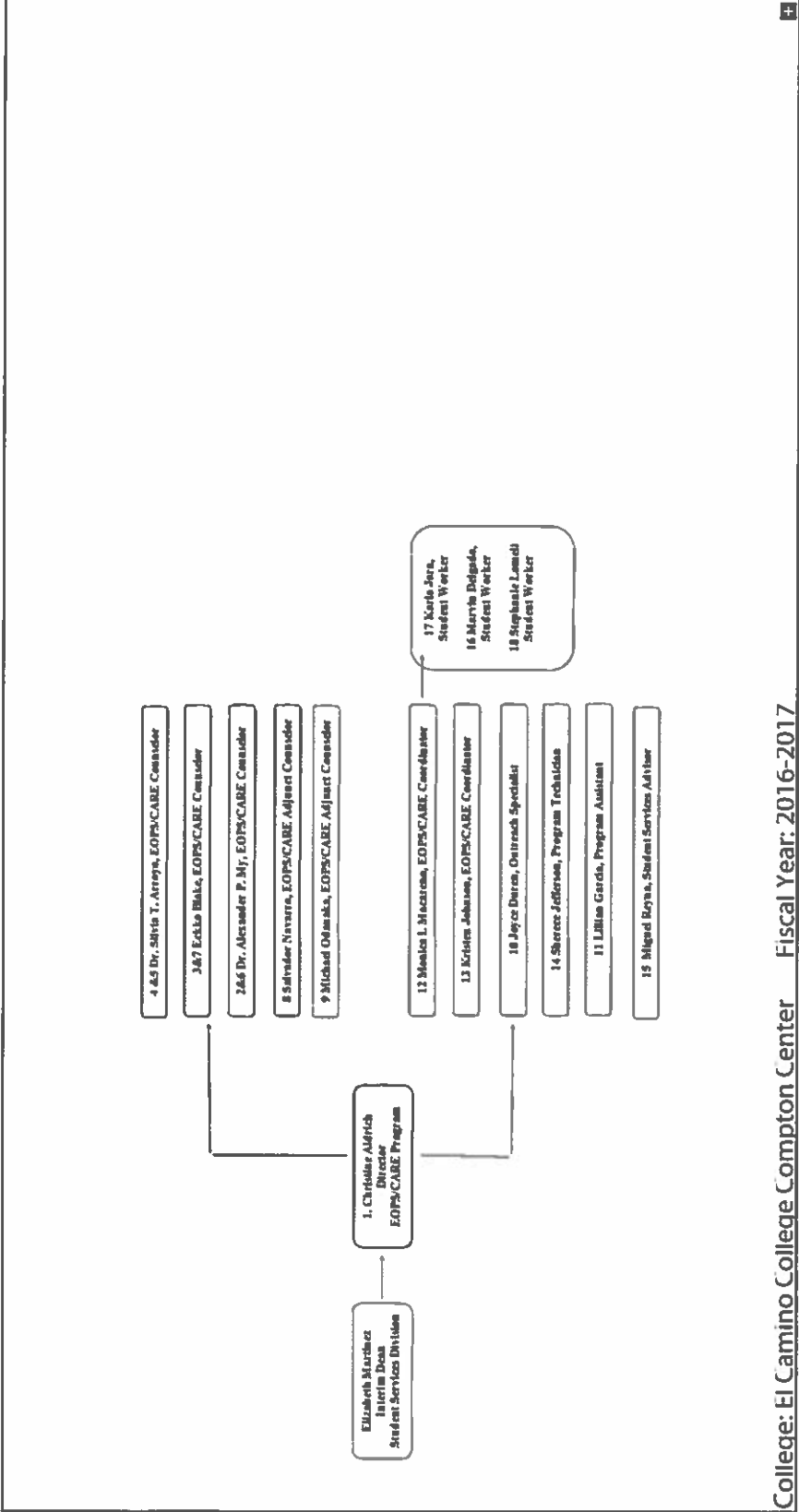
Print Name: Keith Curry

Title (if designee): CEO

Signature:  Date: 11/7/16

College: El Camino College Compton Center Fiscal Year: 2016 - 2017

**PART 2 EOPS/CARE Program Organizational Chart** Include all positions listed in the Student Services Automated Reporting for Community Colleges (SSARCC) EOPS budget plan and include the position numbers used in SSARCC. College Cooperating Agencies Foster Youth Educational Support (CAFYES) programs should also include CAFYES positions with funding from EOPS and/or CARE, as reported in the SSARCC EOPS budget plan.



College: El Camino College Compton Center Fiscal Year: 2016-2017

**CARE SUPPLEMENTAL BUDGET AND ACCOUNTING FORM**


**Proposed Budget**


College **Compton College**

Fiscal Year **2016-2017**

Controlling Account	Category	District Contribution	EOPS Funds	CARE Funds	Backfill Funds	ARRA Funds	Flexible Funds	Other Non District
1000	A	0	1,331	1,120	0	0	0	0
Academic Salaries	B	0	65,242	54,871	0	0	0	0
	Subtotal	0	66,573	55,991	0	0	0	0
2000	A	2,253	46,685	41,985	0	0	0	0
Classified Salaries	B	2,253	42,303	38,042	0	0	0	0
	C	0	0	0	0	0	0	0
	Subtotal	4,506	88,988	80,027	0	0	0	0
3000	A	1,171	22,373	20,141	0	0	0	0
Employee Benefits	B	1,171	38,728	25,352	0	0	0	0
	C	0	0	0	0	0	0	0
	Subtotal	2,342	61,100	45,493	0	0	0	0
4000	A	0	0	0	0	0	0	0
Supplies and Materials	B	0	0	40,500	0	0	0	0
	C	0	0	40,500	0	0	0	0
	Subtotal	0	0	81,000	0	0	0	0
5000	A	0	0	27,500	0	0	0	0
Other Operating Expenses and Services	B	0	0	44,000	0	0	0	0
	Subtotal	0	0	71,500	0	0	0	0
6000	A	0	0	0	0	0	0	0
Caplital Outlay	B	0	0	0	0	0	0	0
	Subtotal	0	0	0	0	0	0	0
7000	B	0	0	209,385	0	0	0	0
Other Outgo	C	0	0	100,000	0	0	0	0
	Subtotal	0	0	309,385	0	0	0	0
<b>Grand Total</b>		<b>6,848</b>	<b>216,661</b>	<b>643,396</b>	<b>0</b>	<b>0</b>	<b>0</b>	<b>0</b>
Category Summary	A	3,424	70,389	90,746	0	0	0	0
	B	3,424	146,273	412,150	0	0	0	0
	C	0	0	140,500	0	0	0	0
<b>Grand Total</b>		<b>6,848</b>	<b>216,661</b>	<b>643,396</b>	<b>0</b>	<b>0</b>	<b>0</b>	<b>0</b>

College/District Approvals:

 \_\_\_\_\_  
 CARE Coordinator Date 10/31/16

 \_\_\_\_\_  
 EOPS Director Date 10/31/16

 \_\_\_\_\_  
 Supervising Administrator of EOPS Date 11/2/16

 \_\_\_\_\_  
 District Business Manager Date 11/7/16

Chancellor's Office Approval:

 \_\_\_\_\_  
 State CARE Coordinator or Designee Date 11/7/16

**PART 3 Year-End Report for Prior Year (2015-16)**

Please provide a brief narrative of your program accomplishments in 2015-16, including but not limited to the following information: number of students served, program objectives achieved; advisory committee involvement; outreach efforts; workshops and class offerings; student success; student awards/scholarship acknowledgments; any special program successes; and overall program evaluation.

**Narrative of Program Accomplishments for 2015-16:**

During the 2015-2016 academic year the El Camino College Compton Center served 926 EOPS students and 172 CARE students. We assisted 706 unduplicated EOPS students with the book service. EOPS/CARE students are Tier 1 priority, therefore, provided the opportunity to participate in priority registration in summer, fall, and spring semesters. The EOPS program provides new student orientation, book vouchers, three counseling contacts, academic and educational planning, workshops, student success workshops, transportation assistance, EOPS direct grants, and pays for student's graduation cap and gown.

The EOPS/CARE Program had two advisory committee meeting(s) in the 2015-2016 academic year. The meeting(s) were held in the fall and spring semesters. The EOPS/CARE staff and EOPS/CARE advisory committee members exchanged information and provided updates. EOPS/CARE hosted a Teen Parenting Conference with our EOPS/CARE advisory members El Nido Family Center, Chavez and Tubman continuation high school on 5/25/16 from 10-2 p.m. in the staff lounge at El Camino College Compton Center. We had 35 teen parents attend and over ten vendors participate in the resource fair.

The EOPS/CARE department was awarded student equity funds to create a peer mentor project to increase the course completion of new and probation EOPS/CARE students. Five peer mentors were hired in the spring 2016 to start working on this project. In the spring 2016, 76 EOPS/CARE students were assigned a peer mentor. EOPS/CARE students will be surveyed to determine effectiveness of the peer mentor project.

In fall 2015 and spring 2016 EOPS offered a variety of workshops. EOPS/CARE worked in collaboration with Financial Aid, General Counseling, Student Success Center, Transfer and Career Center to provide workshops. We had 1,079 EOPS/CARE students participate in over 71 workshops in the spring 2016 on topics such as: Career Planning, Employment Skills, How to choose a major, Early academic intervention, stress management, understanding your educational plan, careers and economy, career choices, college fair, job searching, interview techniques, and goal setting.

EOPS/CARE Counselors participate in a variety of professional development activities to keep up to date on current counseling related issues. EOPS/CARE counselors effectively collaborate with each other and other student service departments on campus.

EOPS/CARE Director hired a new full-time EOPS/CARE Counselor, Eckko Blake, in the spring 2016 semester. A new adjunct counselor was hired named Sal Navarro and Mr. Odanaka was rehired as an adjunct counselor in the spring 2016 academic year.

**PART 3 Year-End Report for Prior Year (2015-16)**

Please provide a brief narrative of your program accomplishments in 2015-16, including but not limited to the following information: number of students served, program objectives achieved; advisory committee involvement; outreach efforts; workshops and class offerings; student success; student awards/scholarship acknowledgments; any special program successes; and overall program evaluation.

**Narrative of Program Accomplishments for 2015-16:**

The adjunct counselors have assisted the full-time EOPS/CARE counselors with counseling appointments, application evaluation, EOPS/CARE workshops, assisting with file audits, fall and spring CARE mini conference, annual spring banquet, and serve on various campus committee meetings.

EOPS/CARE Counselor Eckko Blake coordinated our 11th annual EOPS/CARE banquet. We had 65 students attend. We highlighted three EOPS/CARE students in our program and created a slide show to highlight the history of EOPS/CARE. Students received EOPS/CARE certificates, 43 students graduated with a 3.5 or higher, and 17 transferred to a university. The EOPS/CARE staff offered 6 scholarships to students who go above and beyond in the EOPS/CARE program.

Outreach and recruitment efforts continued throughout the year at the local schools, agencies, governmental organizations, and community groups. Our outreach specialist visited district middle schools and high schools, continuation and adult schools, local DPSS and GAIN services, churches, Shields for family services, Crystal Stairs, El Nido Family Services, and Salvation Army. The EOPS/CARE Outreach Specialist and staff conducted classroom presentations and maintained visibility on various campus recruitment activities such as: Transfer and Career Fair, New student welcome day, and EOPS/CARE women's basketball night.

The EOPS/CARE Director submitted the EOPS/CARE program review to the Student and Community Advancement (SCA) review community in the 2016 spring semester. The last program review was completed in 2012. This program review provided: 1) program description 2) students served last four years 3) description on how interaction with program helps students succeed or meet their educational goals 4) how does the program interact with other on-campus programs or with off-campus entities 5) list notable achievements that have occurred since the last program review 6) program environment and 7) service area outcomes. The program review was reviewed and the committee indicated the review met expectations. The EOPS/CARE Director and staff were provided feedback to improve future program review submissions.

The EOPS/CARE program continues to play an important role in student success at the El Camino College Compton Center. We look forward to increasing our outreach efforts on and off campus to increase enrollment at the El Camino College Compton Center.

**EOPS BUDGET AND ACCOUNTING FORM**

**Proposed Budget**

College Compton College

Fiscal Year 2016-2017

Controlling Account	Category	District Contribution	EOPS Funds	Backfill Funds	ARRA Funds	Flexible Funds	Other Non District
1000 Academic Salaries	A	89,670	5,830	0	0	0	0
	B	29,890	285,675	0	0	0	0
	<b>Subtotal</b>	<b>119,560</b>	<b>291,505</b>	<b>0</b>	<b>0</b>	<b>0</b>	<b>0</b>
2000 Classified Salaries	A	9,012	116,376	0	0	0	0
	B	9,012	102,791	0	0	0	0
	C	0	0	0	0	0	0
	<b>Subtotal</b>	<b>18,024</b>	<b>219,167</b>	<b>0</b>	<b>0</b>	<b>0</b>	<b>0</b>
3000 Employee Benefits	A	30,155	56,364	0	0	0	0
	B	36,698	126,520	0	0	0	0
	C	0	0	0	0	0	0
	<b>Subtotal</b>	<b>66,853</b>	<b>182,884</b>	<b>0</b>	<b>0</b>	<b>0</b>	<b>0</b>
4000 Supplies and Materials	A	0	4,000	0	0	0	0
	B	0	8,500	0	0	0	0
	C	0	8,500	0	0	0	0
	<b>Subtotal</b>	<b>0</b>	<b>21,000</b>	<b>0</b>	<b>0</b>	<b>0</b>	<b>0</b>
5000 Other Operating Expenses and Services	A	0	8,000	0	0	0	0
	B	0	16,200	0	0	0	0
	<b>Subtotal</b>	<b>0</b>	<b>24,200</b>	<b>0</b>	<b>0</b>	<b>0</b>	<b>0</b>
6000 Capital Outlay	A	0	2,800	0	0	0	0
	B	0	0	0	0	0	0
	<b>Subtotal</b>	<b>0</b>	<b>2,800</b>	<b>0</b>	<b>0</b>	<b>0</b>	<b>0</b>
7000 Other Outgo	B	0	374,731	0	0	0	0
	C	0	100,000	0	0	0	0
	<b>Subtotal</b>	<b>0</b>	<b>474,731</b>	<b>0</b>	<b>0</b>	<b>0</b>	<b>0</b>
<b>Grand Total</b>		<b>204,437</b>	<b>1,216,287</b>	<b>0</b>	<b>0</b>	<b>0</b>	<b>0</b>

Category Summary	A	128,837	193,370	0	0	0	0
	B	75,600	914,417	0	0	0	0
	C	0	108,500	0	0	0	0
<b>Grand Total</b>		<b>204,437</b>	<b>1,216,287</b>	<b>0</b>	<b>0</b>	<b>0</b>	<b>0</b>

College/District Approvals:

*Christine Aldrich*  
 EOPS Director 10/31/16  
 Date  
  
 Supervising Administrator of EOPS 11/4/16  
 Date  
  
 District Business Manager 11/7/16  
 Date

Chancellor's Office Approval:

\_\_\_\_\_  
 EOPS Program Coordinator or Designee Date